

# CERTIFIED CORNER RECORDATION

Corner W 1/4 S10 T 29 N. R. 27 W. P.M.M. Lincoln County

I. Record: 1902 original GLO survey by Paul S. Bickel: Set a trachite stone 20x6x3 ins. 15 ins. in the ground, marked 1/4 on the W. face from which:

A pine, 10 ins. diam., bears S. 58°30' E., 50 lks. dist., (33.00 ft.), mkd. 1/4 S10 BT.  
 A pine, 7 ins. diam., bears S. 41°30' W., 35 lks. dist., (23.10 ft.), mkd. 1/4 S9 BT.

II. Found: A trachite stone 18x5x2 ins. 4 ins. above ground loosley set, marked 1/4 on the West face from which :

A steel T post, 1 ins. diam., bears North, 0.10 ft. dist., origin unknown.

III. Perpetuation: At the corner point, determined by the original stone monument, set a Aluminum pipe 2 1/2 ins. diam., 30 ins. long 24 ins. in the ground, with a 3 1/4 ins. diam. Aluminum cap marked as shown below from which:

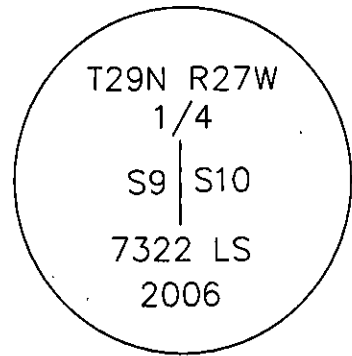
A pine, 7 1/2 ins. diam., bears N. 34° E., 31.80 ft. dist., mkd. 1/4 S10 BT.  
 A pine, 10 ins. diam., bears S. 82° W., 3.00 ft. dist., mkd. 1/4 S9 BT.

Painted faces and 6 in. wide red bands to all bearing trees and attached Land Survey Monument and Bearing Tree signs.

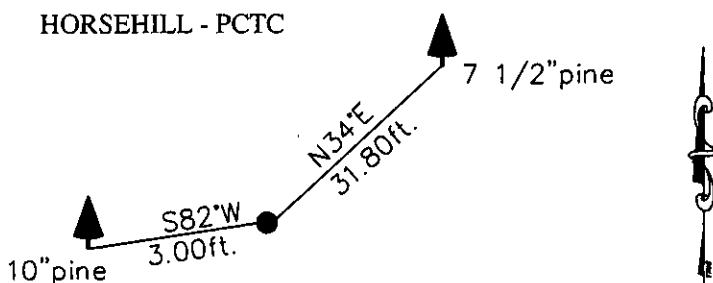
Set a steel post on line 3 ft. North of set monument.

Magnetic declination: 18° East

Equipment used: Hand compass and loggers tape.



Kootenai Surveyors Inc., 314 California Av., Libby, MT. 59923 (406) 293-4354



SKETCH OF CORNER

CERTIFICATION

I, Mike Tester  
 certify the information shown herein is true and correct.

*Mike Tester*  
 Signature Ground Party Chief

I, Alvan F. Hughes  
 certify that this Corner Record correctly represents work performed by me or under my direction in compliance with the "Corner Recordation Act" (70-27-101, et seq., M.C.A.)

*Alvan F. Hughes*  
 Signature of Surveyor & Seal

Date: 1/07/2007 Reg. No. 7322-LS 3224 LG

Employer: Kootenai Surveyors Inc.

Office of Clerk and Recorder, County of Lincoln. This "corner

Sec. 10

record" was filed for record on 200839 BOOK: CCR CC&R'S PAGE: 11040 Pages: 1  
 was noted on the cross-index STATE OF MONTANA LINCOLN COUNTY  
 book No. \_\_\_\_\_ RECORDED: 02/06/2007 3:37 KOI: CC&R'S

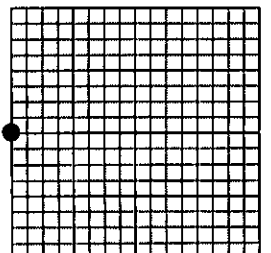
TAMMY D. LAUER CLERK AND RECORDER

FEE: \$0.00

BY: *Tammy D. Lauer*

TO: FILED

Cross Index No. G 13 T. 29N R. 27W P.M., MT



• corner this sheet

Adopted July 1, 1981, Montana Board of Professional Engineers & Land Surveyors