

CERTIFIED CORNER RECORDATION

Corner NW COR. S 10 T 29 N R 27 W P.M.M. LINCOLN County

I. Record: 1902 original GLO survey by Paul S. Bickel, set a trachite stone 18x7x6 ins., 12 ins. in the ground, marked with 5 notches on the S. edge and 2 notches on the E. edges from which:

- A pine, 6 ins. diam. bears N. 39°30' E. 56 lks. dist. (36.96 ft.) mkd. T29N R27W S2 BT.
- A fir, 7 ins. diam. bears S. 31°30' E. 34 lks. dist. (22.44 ft.) mkd. T29N R27W S11 BT.
- A pine, 9 ins. diam. bears S. 75°30' W. 50 lks. dist. (33.00 ft.) mkd. T29N R27W S10 BT.
- A fir, 6 ins. diam. bears N. 62° W. 38 lks. dist. (25.08 ft.) mkd. T29N R27W S3 BT.

II. Found: A trachite stone 15x8x7 ins. 4 ins. above ground firmly set, marked with 5 notches on the South and 2 notches on the East edges from which:

- A fir stump, 20 ins. diam., bears N. 62° W., 25.08 ft. dist. with visible scribing.
- A fir stump, 18 ins. diam., bears S. 31° E., 22.44 ft. dist. with no visible face.
- A steel T bar, 1 ins. diam., bears East, 0.10 ft. dist. origin unknown.

III. Perpetuation: At the corner point, determined from the original bearing trees and original stone monument, set a 2 1/2 ins. diam. Aluminum pipe 30 ins. long, 26 ins. in the ground, with a 3 1/4 ins. diam. Aluminum cap mkd. as shown below, from which:

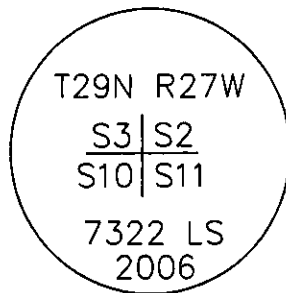
- A pine, 8 ins. diam., bears N. 52° E., 17.30 ft. dist., mkd. T29N R27W S2 BT.
- A pine, 10 1/2 ins. diam., bears S. 31° E., 59.00 ft. dist., mkd. T29N R27W S11 BT.
- A pine, 6 1/2 ins. diam., bears S. 68° W., 40.40 ft. dist., mkd. T29N R27W S10 BT.
- A pine, 7 ins. diam., bears N. 38° W., 35.50 ft. dist., mkd. T29N R27W S3 BT.

Raise a collar of stone around set monument

Painted faces and 6 in. wide red bands to all bearing trees and attached Bearing Tree and Land Survey Monument signs.

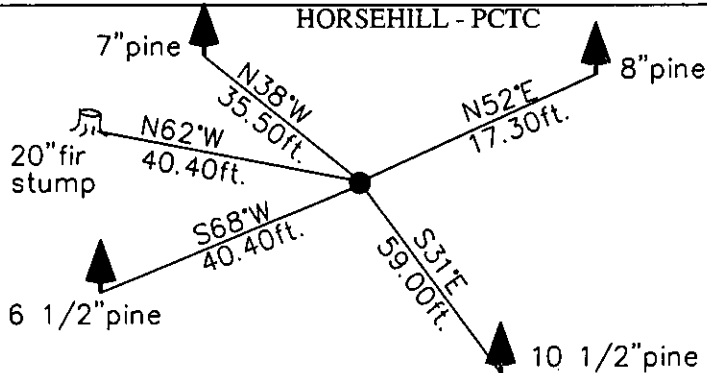
Magnetic declination: 18° East

Equipment used: Hand compass and loggers tape



Kootenai Surveyors Inc., 314 California Av., Libby, MT. 59923 (406) 293-4354

HORSEHILL - PCTC



SKETCH OF CORNER

CERTIFICATION

I, Mike Tester certify the information shown herein is true and correct.

Signature Ground Party Chief

I, Alvah F. Hughes certify that this Corner Record correctly represents work performed by me or under my direction in accordance with the "Corner Recordation Act" (70-22-101, et seq., M.C.A.)

Signature of Surveyor & Seal

Date: 1/07/2007 Reg. No. 7322-LS-7322 LS

Employer: Kootenai Surveyors Inc.

Office of Clerk and Recorder, County of Lincoln This "corner

record" was filed for record on 200838 BOOK: CCR CC&R'S PAGE: 11039 Pages: 1

was noted on the cross-index STATE OF MONTANA LINCOLN COUNTY RECORDED: 02/06/2007 3:37 KOI: CC&R'S

book No. TAMMY D. LAUER CLERK AND RECORDER

FEE: \$0.00

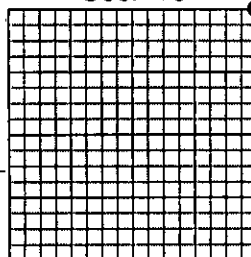
BY: [Signature]

TO: FILED

Cross Index No. E 17 T 29N R 27W P.M., MT

Adopted July 1, 1981, Montana Board of Professional Engineers & Land Surveyors

Sec. 10



• corner this sheet