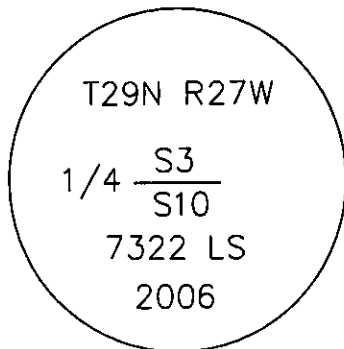


CERTIFIED CORNER RECORDATION

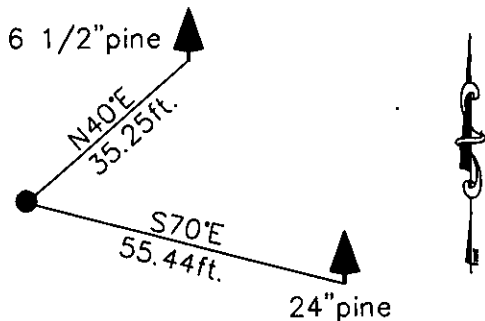
Corner N 1/4 S10 T. 29 N. R. 27 W. P.M.M. Lincoln County

- I. Record: 1902 original GLO survey by Paul S. Bickel: Set a post 4x4 ins. 36 ins. long 24 ins. in the ground, marked 1/4 S3 on the N. face; 10 on S. from which:
- A pine, 10 ins. diam., bears S. 70° E., 84 lks. dist., (55.44 ft.), mkd. 1/4 S10 BT.
A pine, 20 ins. diam., bears N. 70° E., 50 lks. dist., (33.00 ft.), mkd. 1/4 S3 BT.
- II. Found: A steel T post, 1 ins. diam. origin unknown, from which:
- A pine, 24 ins. diam., bears S. 70° E., 55.44 ft. dist. with visible scribes.
- III. Perpetuation: At the corner point, determined by the original bearing tree and found T bar monument, set a Aluminum pipe 2 1/2 ins. diam., 30 ins. long 24 ins. in the ground, with a 3 1/4 ins. diam. Aluminum cap marked as shown below from which:
- A pine, 6 1/2 ins. diam., bears N. 40° E. 35.25 ft. dist., mkd. 1/4 S3 BT.
- Raise a rock collar, 1 ft. diam. around set monument.
- Painted faces and 6 in. wide red bands to all bearing trees and attached Land Survey Monument and Bearing Tree signs.
- Set a steel post on line 3 ft. East of monument.
- Magnetic declination: 18° East
- Equipment used: Hand compass and loggers tape



Kootenai Surveyors Inc., 314 California Av., Libby, MT. 59923 (406) 293-4354

HORSEHILL - PCTC



SKETCH OF CORNER

CERTIFICATION

I, Mike Tester
certify the information shown herein is true and correct.

[Signature]
Signature Ground Party Chief

I, Alvah F. Hughes
certify that this Corner Record correctly represents work performed by me or under my direction in compliance with the "Corner Recordation Act" (70-27-301, et seq., M.C.A.)

[Signature]
Signature of Surveyor & Seal

Date: 1/07/2007 Reg. No. 7322 LS

Employer: Kootenai Surveyors Inc.

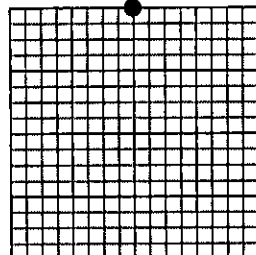
Office of Clerk and Recorder, County of Lincoln This "corner

Sec. 10

record" was filed for record on 200837 BOOK: CCR CC&R'S PAGE: 11038 Pages: 1
was noted on the cross-in: STATE OF MONTANA LINCOLN COUNTY
book No. TAMMY D. LAUER CLERK AND RECORDER
RECORDED: 02/06/2007 3:36 KOI: CC&R'S
FEE: \$0.00 BY: [Signature]
TO: FILED

Cross Index No. E 15 T. 29N R. 27W P.M., MT

Adopted July 1, 1981, Montana Board of Professional Engineers & Land Surveyors



• corner this sheet