

# CERTIFIED CORNER RECORDATION

Corner SE COR. S2 T 29 N. R. 27 W. P.M.M. LINCOLN County

I. Record: 1902 original GLO survey by Paul S. Bickel, set a limestone 20x10x7 ins., 15ins. in the ground, marked with 5 notches on the S. edge and 1 notch on the E. edges from which:

- A pine, 10 ins. diam., bears N. 65° E. 45 lks. dist. (29.70 ft), mkd. T29N R27W S1 BT.
- A pine, 9 ins. diam., bears S. 63°45' E. 55 lks. dist. (36.30 ft), mkd. T29N R27W S12 BT.
- A pine, 9 ins. diam. bears S. 63° W. 59 lks. dist. (38.94 ft), mkd. T29N R27W S11 BT.
- A pine, 11 ins. diam., bears N. 57°45' W. 32 lks. dist. (21.12 ft), mkd. T29N R27W S2 BT.

II. Found: A limestone 19x10x7 ins., 3 ins. above ground with 5 notches on the South edge, and 1 notch on the East edge. No accessories were found during the corner search.

III. Perpetuation: At the corner point, determined from the original stone monument, set a 2 1/2 ins. diam. Aluminum pipe 30 ins. long, 26 ins. in the ground, with a 3 1/4 ins. diam. Aluminum cap mkd. as shown below, from which:

- A larch, 7 ins. diam., bears N. 35° E., 28.30 ft. dist., mkd. T29N R27W S1 BT.
- A pine, 8 ins. diam., bears S. 69° E., 27.30 ft. dist., mkd. T29N R27W S12 BT.
- A pine, 6 ins. diam., bears S. 58° W., 12.70 ft. dist., mkd. T29N R27W S11 BT.
- A larch, 20 ins. diam., bears N. 37° W., 32.60 ft. dist., mkd. T29N R27W S2 BT.

Painted faces and 6 in. wide red bands to all bearing trees and attached Bearing Tree and Land Survey Monument signs.

Set a steel post on line 3 ft. South of set monument.

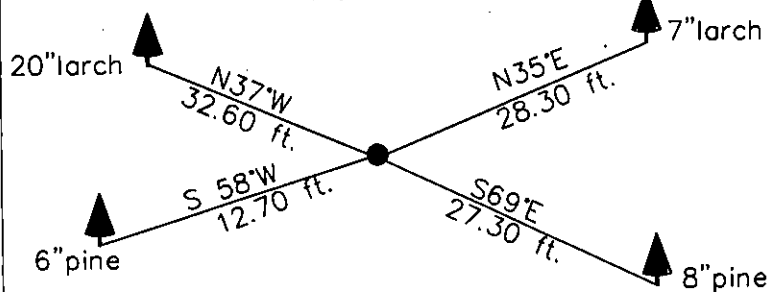
Magnetic declination: 18° East

Equipment used: Hand compass and loggers tape

T29N R27W  
S2 | S1  
S11 | S12  
7322 LS  
2006

Kootenai Surveyors Inc., 314 California Av., Libby, MT. 59923 (406) 293-4354

HORSEHILL - PCTC



SKETCH OF CORNER

## CERTIFICATION

I, Kelly Rooney  
certify the information shown herein is true and correct.

*Kelly Rooney*  
Signature Ground Party Chief

I, Alvah F. Hughes  
certify that this Corner Record correctly represents work performed by me or under my direction in compliance with the "Corner Recordation Act" (70-22-101, et seq., M.C.A.)

*Alvah F. Hughes*  
Signature of Surveyor & Seal # 7322 LS

Date: 12/27/2006 Reg. No. 7322-LS

Employer: Kootenai Surveyors Inc.

Office of Clerk and Recorder, County of Lincoln This "corner

record" was filed for record on 200835 BOOK: CCR CC&R'S PAGE: 11036 Pages: 1

was noted on the cross-index; STATE OF MONTANA LINCOLN COUNTY

book No. RECORDED: 02/06/2007 3:34 KOI: CC&R'S

TAMMY D. LAUER CLERK AND RECORDER

FEE: \$0.00

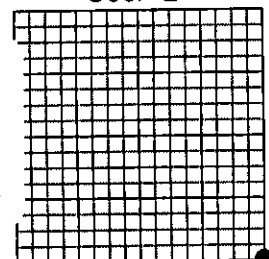
TO: FILED

BY: *Debbie Lauer*

Cross Index No. E 21 T. 29N R. 27W P.M., MT

Adopted July 1, 1981, Montana Board of Professional Engineers & Land Surveyors

Sec. 2



• corner this sheet