

CERTIFIED CORNER RECORDATION

Corner W 1/4 S2 T 29 N. R. 27 W. P.M.M. Lincoln County

I. Record: 1902 original GLO survey by Paul S. Bickel: Set a trachite stone, 18x9x6 ins. 12 ins. the ground, marked 1/4 on the W. face from which:

A pine, 10 ins. diam., bears N. 16° E., 65 lks. dist., (42.90 ft.), mkd. 1/4 S2 BT.
 A pine, 12 ins. diam., bears N. 43° 30' W., 80 lks. dist., (52.80 ft.), mkd. 1/4 S3 BT.

1965 BLM Remonumentation by D. Lindenburg: Set an iron post, 30 ins. long, 2 1/2 ins. diam., 26 ins. in the ground, with brass cap from which:

A larch, 8 ins. diam., bears S. 85° E., 77 lks. dist., (50.82 ft.) mkd. 1/4 S2 BT.
 A pine, 6 ins. diam., bears N. 40° W., 30 lks. dist., (19.80 ft.) mkd. 1/4 S3 BT.

II. Found: A 3 1/4 ins. diam. BLM brass cap on a 2 1/2 ins. diam. iron pipe firmly set from which:

A larch, 15 ins. diam., bears S. 85° E., 51.30 ft. dist., with healed face.

III. Perpetuation: Establish one bearing tree described below:

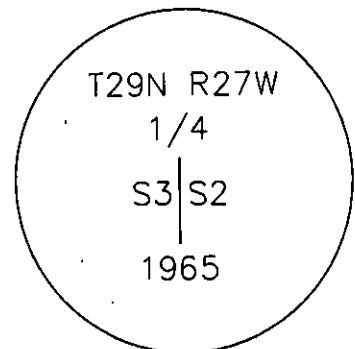
A larch, 5 ins. diam., bears N. 51° W., 13.43 ft. dist., scribed 1/4 S3 BT.

Set a steel post on line 6 ft. East of found monument.

Painted faces and 6 in. wide red bands to all bearing trees and attached Land Survey Monument and Bearing Tree signs.

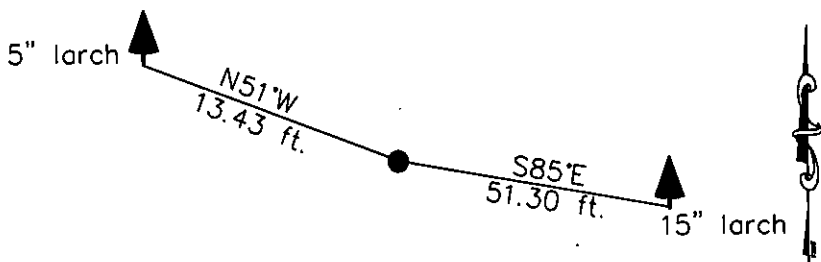
Magnetic declination: 18° East

Equipment used: Hand compass and loggers tape



Kootenai Surveyors Inc., 314 California Av., Libby, MT. 59923 (406) 293-4354

HORSEHILL- PCTC



SKETCH OF CORNER

CERTIFICATION

I, Kelly Rooney
 certify the information shown herein is true and correct.
Kelly Rooney
 Signature Ground Party Chief

I, Alvah F. Hughes
 certify that this Corner Record correctly represents the corner
 performed by me or under my direction in compliance with
 the "Corner Recordation Act" (70-22-101, et seq., M.C.A.)
Alvah F. Hughes
 Signature of Surveyor & Seal

Date: 12/27/2006 Reg. No. 7322-LS
 Employer: Kootenai Surveyors Inc.

Office of Clerk and Recorder, County of Lincoln This "corner

Sec. 2

record" was filed for record on 200833 BOOK: CCR CC&R'S PAGE: 11034 Pages: 1

was noted on the cross-ir STATE OF MONTANA LINCOLN COUNTY

book No. RECORDED: 02/06/2007 3:32 KOI: CC&R'S

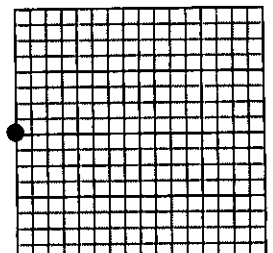
TAMMY D. LAUER CLERK AND RECORDER

FEE: \$0.00

BY: *Tammy D. Lauer*

TO: FILED

Cross Index No. C 17 T. 29N R. 27W P.M., MT



• corner this sheet

Adopted July 1, 1981, Montana Board of Professional Engineers & Land Surveyors