

# CERTIFIED CORNER RECORDATION

Corner E 1/4 S11 T 29 N. R. 27 W. P.M.M. Lincoln County

- I. Record: 1902 original GLO survey by Paul S. Bickel: Set a slate stone, 19x9x6 ins. 13 ins. in the ground, marked 1/4 on the W. face from which:
- A pine, 7 ins. diam., bears S. 87° E., 50 lks. dist., (33.00 ft.), mkd. 1/4 S12 BT.
- A pine, 8 ins. diam., bears N. 14° W., 29 lks. dist., (19.14 ft.), mkd. 1/4 S11 BT.

- II. Found: A trachite stone 19x8x6 ins. 14 ins. in the ground mkd. 1/4 on the W. face. No accessories were recovered during this corner search.

- III. Perpetuation: At the corner point, determined by the original found stonemonument, set a Aluminum pipe 2 1/2 ins. diam., 30 ins. long 26 ins. in the ground, with a 3 1/4 ins. diam. Aluminum cap marked as shown below from which:

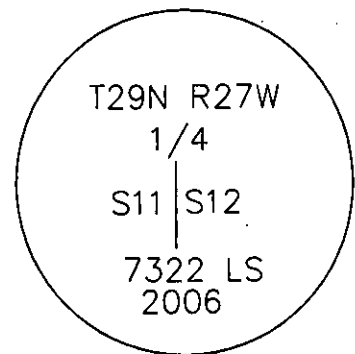
A larch, 8 ins. diam., bears S. 86° W., 11.30 ft. dist., scribed 1/4 S11 BT.

A larch, 8 ins. diam., bears N. 40°30' E., 18.10 ft. dist., scribed 1/4 S12 BT.

Painted faces and 6 in. wide red bands to all bearing trees and attached Land Survey Monument and Bearing Tree signs.

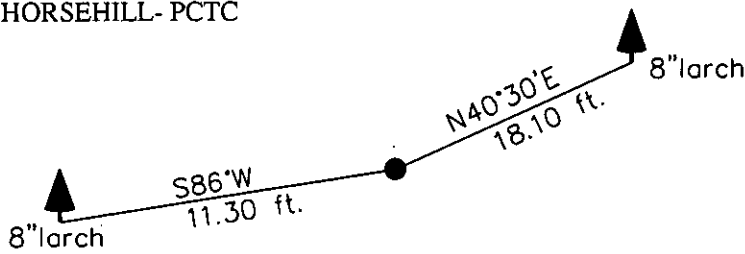
Magnetic declination: 18° East

Equipment used: Hand compass and loggers tape



Kootenai Surveyors Inc., 314 California Av., Libby, MT. 59923 (406) 293-4354

HORSEHILL- PCTC



SKETCH OF CORNER

## CERTIFICATION

I, Kelly Rooney  
certify the information shown herein is true and correct.

Kelly Rooney  
Signature Ground Party Chief

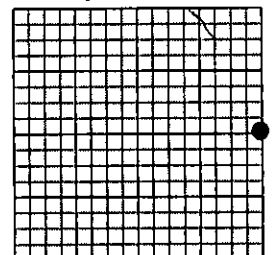
I, Alvah F. Hughes  
certify that this Corner Record correctly represents work performed by me or under my direction in compliance with the "Corner Recordation Act" (70-22-101, et seq., M.C.A.)

Alvah F. Hughes  
Signature of Surveyor & Seal

Date: 12/23/2006 Reg. No. 7322 LS

Employer: Kootenai Surveyors Inc.

Sec. 11



• corner this sheet

Office of Clerk and Recorder, County of Lincoln. This "corner

record" was filed for record on

200832 BOOK: CCR CC&R'S PAGE: 11033 Pages: 1

was noted on the cr STATE OF MONTANA LINCOLN COUNTY

book No. RECORDED: 02/06/2007 3:31 KOI: CC&R'S

TAMMY D. LAUER CLERK AND RECORDER

FEE: \$0.00

BY: Tammy D. Lauer

TO: FILED

Cross Index No. G 21 T. 29N R. 27W P.M., MT

Adopted July 1, 1981, Montana Board of Professional Engineers & Land Surveyors