

# CERTIFIED CORNER RECORDATION

Corner NW COR. S5 T. 29 N. R. 27 W. P.M.M. Lincoln County

I. Record: 1902 original GLO survey by P. Bickel: Set a trachite stone 20x10x8 ins. 15 ins. in the ground, marked CC on the S., with 5 grooves on the E. and 1 groove on the W. faces, from which:

- A fir, 8 ins. diam., bears S. 39°15' E., 70 lks. dist. (46.20 ft.) mkd.T29N R27W S5 BT.
- A fir, 7 ins. diam., bears S. 76°15' W., 26 lks. dist. (17.16 ft.) mkd.T29N R27W S6 BT.

1971 Certified Corner Rec. Bk. 1 Page 237 by S. Skousen 2532-S : Set a 2 ins. diam. iron pipe 24 ins. in the ground with brass cap at the exact center point of found original stone, from which:

- A fir stump, bears S. 39°15' E., 46.20 ft. dist. with visible scribing.
- A fir stump, bears S. 76°15' W., 17.16 ft. dist. with visible scribing.
- A pine, 6 ins. diam., bears S. 72°30' W., 40 lks. dist. (26.40 ft.) mkd. RM.
- A pine, 9 ins. diam., bears N. 68°15' W., 112 lks. dist. (73.92 ft.) mkd. RM.

II. Found: A 2 ins. diam. iron pipe with brass cap marked as shown below from which:

- A pine, 10 ins. diam., bears N. 68°30' W., 73.45 ft. dist. with visible scribing.
- A pine snag, 9 ins. diam., bears S. 72°30' W., 26.40 ft. dist. with healed face.
- A fir stump, 12 ins. diam., bears S. 39°15' E., 46.20 ft. dist.

III. Perpetuation: Establish two bearing trees described below:

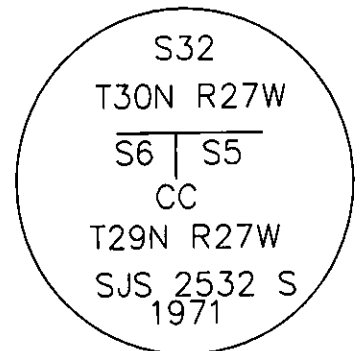
- A pine, 12 ins. diam., bears S. 24°30' E., 60.40 ft. dist., mkd. T29N R27W S5 BT.
- A pine, 5 ins. diam., bears S. 28° W., 41.30 ft. dist., mkd. T29N R27W S6 BT.

Painted faces and 6 in. wide red bands to all bearing trees and attached Land Survey Monument and Bearing Tree signs.

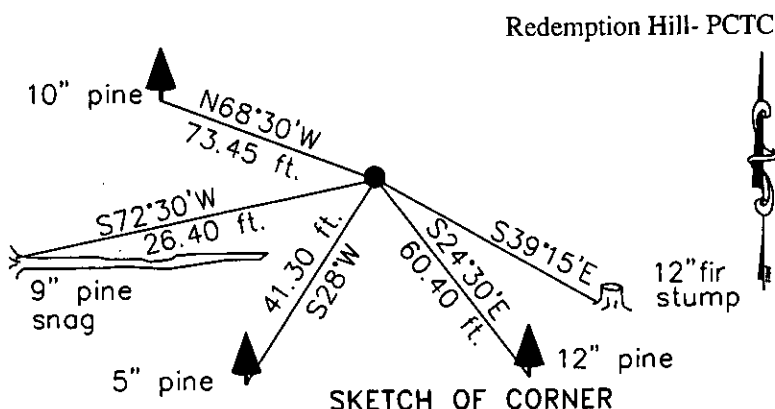
Set a steel post on line 3 ft. South of found monument.

Magnetic declination: 18° East

Equipment used: Hand compass and loggers tape



Kootenai Surveyors Inc., 314 California Av., Libby, MT. 59923 (406) 293-4354



CERTIFICATION  
I, Kelly Rooney  
certify the information shown herein is true and correct.  
Kelly Rooney  
Signature Ground Party Chief  
I, Alvah F. Hughes  
certify that this Corner Record correctly represents work performed by me or under my direction in compliance with the "Corner Recordation Act" (70-22-101, et seq., M.C.A.)  
Alvah F. Hughes  
Signature of Surveyor & Recorder  
Date: 11/9/2006 Reg. No. 7322-LS HUGHES  
Employer: Kootenai Surveyors Inc. 7322 LS

Office of Clerk and Recorder, County of Lincoln. This "corner

record" was filed for record on 200831 BOOK: CCR CC&R'S PAGE: 11032 Pages: 1

was noted on the cross-index STATE OF MONTANA LINCOLN COUNTY

book No. TAMMY D. LAUER CLERK AND RECORDER

FEE: \$0.00

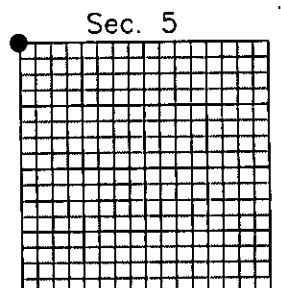
TO: FILED

BY: [Signature]

Cross Index No. A 05 T. 29N R. 27W P.M., MT

Adopted July 1, 1981, Montana Board of Professional Engineers & Land Surveyors

\\Manon\manon-shared\Corner Rec\Cross Wolf PCTC.dwg, 1/2/2007 12:33:21 PM, Konica



• corner this sheet