

CERTIFIED CORNER RECORDATION

Corner SW Cor. S5 T. 29 N. R. 27 W. P.M.M. LINCOLN County

I. Record: 1902 original GLO survey by P. Bickel: set a trachite stone 19x7x5 ins., 13 ins. in the ground, marked with 5 notches on the South and East edges from which:

- A pine, 28 ins. diam., bears N. 71° E. 106 lks. dist. (69.96 ft), mkd. T29N R27W S5 BT.
- A fir, 16 ins. diam., bears S. 79° E. 105 lks. dist. (69.30 ft), mkd. T29N R27W S8 BT.
- A pine, 30 ins. diam. bears S. 13° W. 62 lks. dist. (40.92 ft), mkd. T29N R27W S7 BT.
- A pine, 14 ins. diam., bears N. 50° W. 50 lks. dist. (33.00 ft), mkd. T29N R27W S6 BT.

1971 BLM Remoumentation by French: Set on iron post, 30 ins. long, 2 1/2 ins. diam., 24 ins. in the ground, with brass cap mkd. as shown below from which:

- A pine, 8 ins. diam., bears N. 64°30' E., 169 lks. dist., mkd. T29N R27W S5 BT.
- A pine, 9 ins., diam., bears S. 30° E., 16 lks., dist., mkd. T29N R27W S8 BT.

II. Found: A 3 1/4 ins. diam. BLM brass cap on a 2 1/2 in. diam. iron pipe firmly set from which:

- A pine snag, 30 ins. diam., bears N.71°E., 69.96 ft. with visible scribing.
- A pine, 15 ins. diam., bears S.5°E., 10.43 ft. dist. with visible scribing.(S.0°30'E 10.56)
- A pine stump, 30 ins. diam., bears S.10°W., 40.92 ft. dist. with visible scribing.
- A pine, 24 ins. diam., bears N.50°W., 33.00 ft. dist. with visible scribing.

III. Perpetuation: Establish two bearing trees described below:

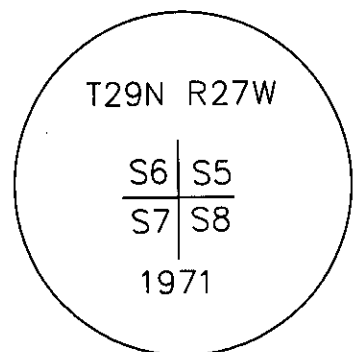
- A pine, 10 ins. diam., bears N.69°E., 35.50 ft. dist. mkd.T29N R27W S5 BT.
- A larch, 9 ins. diam., bears S.87°W., 58.10 ft. dist. mkd. T29N R27W S7 BT.

Painted faces and 6 in. wide red bands to all bearing trees and attached Bearing tree and Land Survey Monument signs.

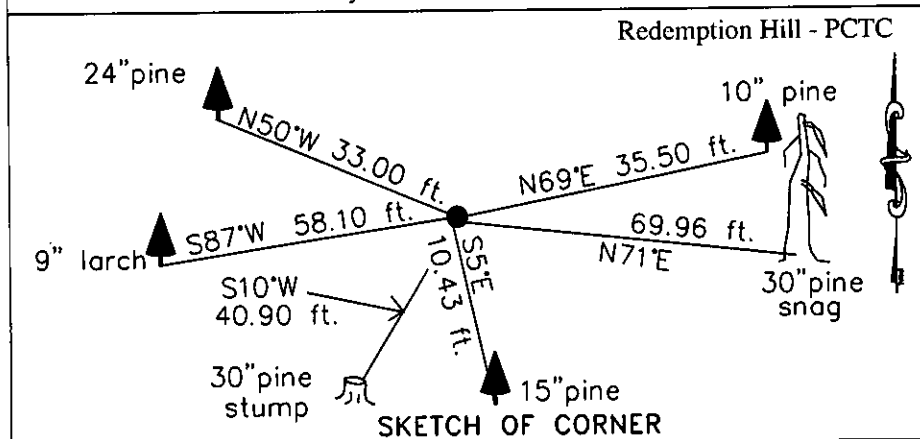
Set a steel post on line 3 ft. North of monument.

Magnetic declination: 18° East

Equipment used: Hand compass and loggers tape



Kootenai Surveyors Inc., 314 California Av., Libby, MT. 59923 (406) 293-4354



CERTIFICATION

I, Kelly Rooney
certify the information shown herein is true and correct.
Kelly Rooney
Signature Ground Party Chief

I, Alvah F. Hughes
certify that this Corner Record correctly represents work performed by me or under my direction in compliance with the "Corner Recordation Act" (70-22-101) et seq. M.C.A.
Alvah F. Hughes
Signature of Surveyor & Seal
Date: 10/31/2006 Reg. No. 7322-15
Employer: Kootenai Surveyors Inc.

Office of Clerk and Recorder, County of Lincoln. This "corner record" was filed for record 200826 BOOK: CCR CC&R'S PAGE: 11027 Pages: 1 was noted on the cross-ind. STATE OF MONTANA LINCOLN COUNTY RECORDED: 02/06/2007 3:25 KOI: CC&R'S book No. TAMMY D. LAUER CLERK AND RECORDER FEE: \$0.00 BY: *Flannery* TO: FILED

Cross Index No. V21 E5 T. 29 R. 27 W. P.M., MT

Adopted July 1, 1981, Montana Board of Professional Engineers & Land Surveyors

