

CERTIFIED CORNER RECORDATION

Corner N 1/4 S5 T 29 N. R. 27 W. P.M.M. Lincoln County

I. Record: 1893 original GLO survey by J. Keerl and A. Jaqueth: Set a limestone stone, 18x10x4 ins. 12 ins. the ground, marked 1/4 on the N face from which:

A pine, 16 ins. diam., bears S. 6° W., 43 lks. dist., (28.38 ft.), mkd. 1/4 S5 BT.
A fir, 12 ins. diam., bears N. 70° W., 67 lks. dist., (44.22 ft.), mkd. 1/4 S32 BT.

II. Found: No monument or accessories were found during A field search of the the area.

III. Perpetuation: At the corner point, determined by survey, set a Aluminum pipe 2 1/2 ins. diam., 30 ins. long 24 ins. in the ground, with a 3 1/4 ins. diam. Aluminum cap marked as shown below from which:

A larch, 6 ins. diam., bears S. 2° W., 31.31 ft. dist., scribed 1/4 S5 BT.
A larch, 10 ins. diam., bears S. 64° E., 23.69 ft. dist., scribed 1/4 S5 BT.

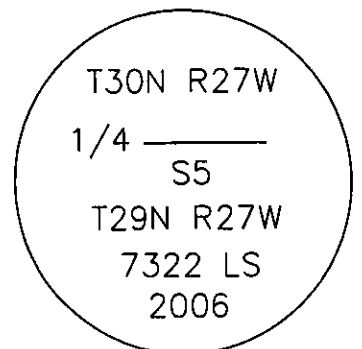
Painted faces and 6 in. wide red bands to all bearing trees and attached Land Survey Monument and Bearing Tree signs.

Raise a collar of stone 1 ft. diam., 1 ft high around set monument.

Set a steel post on line 3 ft. East of set monument with Survey Monument and Property line stickers attached.

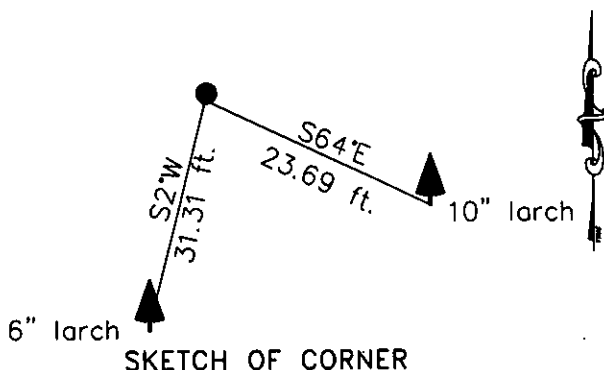
Magnetic declination: 18° East

Equipment used: Hand compass and loggers tape



Kootenai Surveyors Inc., 314 California Av., Libby, MT. 59923 (406) 293-4354

Redemption Hill - PCTC



CERTIFICATION

I, Kelly Rooney
certify the information shown herein is true and correct.

Kelly Rooney
Signature of Surveyor & Seal

I, Alvah F. Hughes
certify that this Corner Record correctly represents work performed by me or under my direction in compliance with the "Corner Recordation Act" (70-22-101, et seq. M.C.A.)

Alvah F. Hughes
Signature of Surveyor & Seal

Date: 10/31/2006 Reg. No. 7322-LS

Employer: Kootenai Surveyors Inc.

Office of Clerk and Recorder, County of Lincoln This "corner

record" was filed for record

was noted on the cross-inc

book No. _____

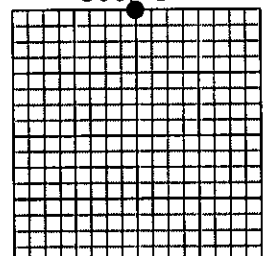
200825 BOOK: CCR CC&R'S PAGE: 11026 Pages: 1
STATE OF MONTANA LINCOLN COUNTY
RECORDED: 02/06/2007 3:24 KOI: CC&R'S
TAMMY D. LAUER CLERK AND RECORDER
FEE: \$0.00 BY: Leanne Lauer
TO: FILED

Cross Index No. A 07 T. 29N R. 27W P.M., MT

Adopted July 1, 1981, Montana Board of Professional Engineers & Land Surveyors

\\Manon\manon-shared\Corner Rec\Cross Wall PCTC.dwg, 1/2/2007 12:30:47 PM, Konica

Sec. 5



• corner this sheet