

CERTIFIED CORNER RECORDATION

Corner W 1/4 S5 T 29 N. R. 27 W. P.M.M. Lincoln County

I. Record: 1902 original GLO survey by Paul S. Bickel: Set a trachite stone 19x6x4 ins. 13 ins. in the ground, marked 1/4 on the W face from which:

A tamarack, 16 ins. diam., bears N. 68°E., 39 lks. dist., (25.74 ft.), mkd. 1/4 S5 BT.
A tamarack, 6 ins. diam., bears N. 73°15' W., 47 lks. dist., (31.02 ft.), mkd. 1/4 S6

BT.

1971 BLM Remonumentation by French: Set a iron post, 30 ins. long, 2 1/2 ins. diam., 24 ins. in the ground with brass cap from which:

A pine, 5 ins. diam., bears N. 50°30' E., 46 lks. dist., (30.36 ft) mkd. 1/4 S5 BT.
A pine, 12 ins. diam., bears S. 68°30' W., 56 lks. dist., (36.96 ft) mkd. 1/4 S6 BT.

II. Found: A 3 1/4 ins. diam. BLM brass cap on a 2 1/2 ins. diam. iron pipe firmly set from which:

A pine snag, 10 ins. diam., bears N. 68°30' W., 36.96 ft. dist. with visible scribes.

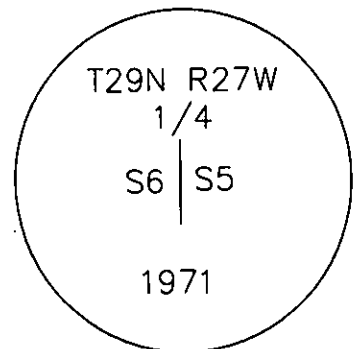
III. Perpetuation: Establish two bearing trees described below:

A pine, 12 ins. diam., bears S. 24°30' E., 60.40 ft. dist. mkd. 1/4 S5 BT.
A pine, 5 ins. diam., bears S. 28° W., 41.30 ft. dist., mkd. 1/4 S6 BT.

Painted faces and 6 in. wide red bands to all bearing trees and attached Land Survey Monument and Bearing Tree signs.

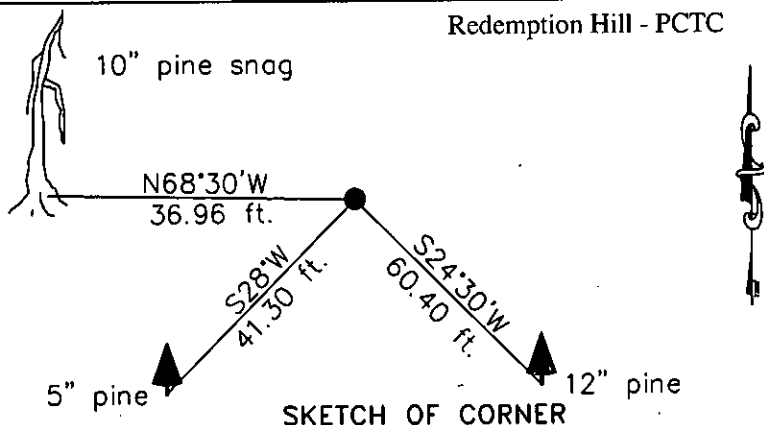
Magnetic declination: 18° East

Equipment used: Hand compass and loggers tape



Kootenai Surveyors Inc., 314 California Av., Libby, MT. 59923 (406) 293-4354

Redemption Hill - PCTC



CERTIFICATION

I, kelly Rooney
certify the information shown herein is true and correct.
Kelly Rooney
Signature Ground Party Chief

I, Alvah F. Hughes
certify that this Corner Record correctly represents work performed by me or under my direction in compliance with the "Corner Recordation Act" (70-22-101, et seq., M.C.A.)
Alvah F. Hughes
Signature of Surveyor & Recorder

Date: 9/30/2006 Reg. No. 7322-LS
Employer: Kootenai Surveyors, Inc.

Sec. 5

Office of Clerk and Recorder, County of Lincoln This "corner

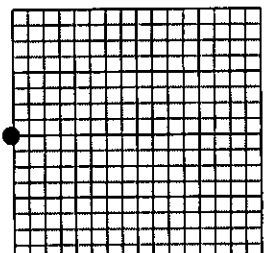
record" was filed for record - 200823 BOOK: CCR CC&R'S PAGE: 11024 Pages: 1

was noted on the cross-index STATE OF MONTANA LINCOLN COUNTY
book No. RECORDED: 02/06/2007 3:22 KOI: CC&R'S

TAMMY D. LAUER CLERK AND RECORDER
FEE: \$0.00 BY:
TO: FILED

Cross Index No. C 05 T. 29N R. 27W P.M., MT

Adopted July 1, 1981, Montana Board of Professional Engineers & Land Surveyors



• corner this sheet