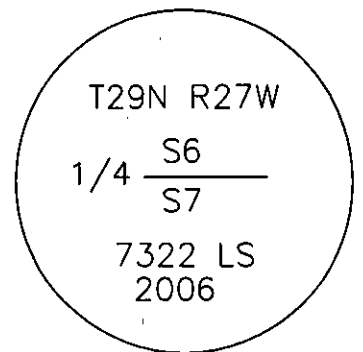


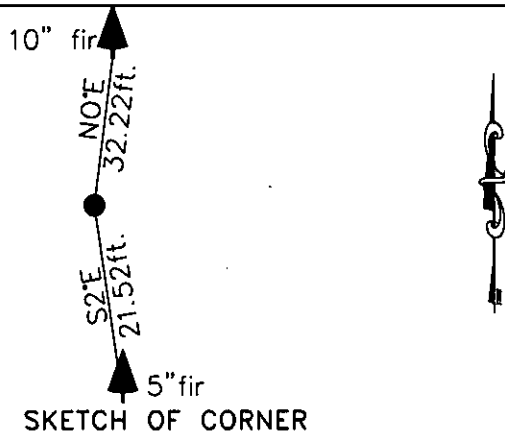
# CERTIFIED CORNER RECORDATION

Corner N 1/4 S7 T 29 N. R. 27 W. P.M.M. Lincoln County

- I. Record: 1902 original GLO survey by Paul S. Bickel: Set a trachite stone, 17x7x6 ins. 12 ins. in the ground, marked 1/4 on the N. face from which:
- A fir, 6 ins. diam., bears S. 23° E., 36 lks. dist., (23.76 ft.), mkd. 1/4 S7 BT.
- A pine, 8 ins. diam., bears N. 56°15' W., 67 lks. dist., (44.22 ft.), mkd. 1/4 S6 BT.
- II. Found: A trachite stone, 14x8x6 ins. 4 ins. above ground firmly set, marked 1/4 on the North face. No remains of the original bearing trees were found during a search of the area.
- III. Perpetuation: At the corner point, determined by the original found stone monument, set a Aluminum pipe 2 1/2 ins. diam., 30 ins. long 26 ins. in the ground, with a 3 1/4 ins. diam. Aluminum cap marked as shown below from which:
- A fir, 10 ins. diam., bears N. 0° E., 32.22 ft. dist., scribed 1/4 S 6 BT.
- A fir, 5 ins. diam., bears S. 2° E., 21.52 ft. dist., scribed 1/4 S 7 BT.
- Painted faces and 6 in. wide red bands to all bearing trees and attached Land Survey Monument and Bearing Tree signs.
- Set a steel post on line 3 ft. East of set monument.
- Magnetic declination: 18° East
- Equipment used: Hand compass and loggers tape



Kootenai Surveyors Inc., 314 California Av., Libby, MT. 59923 (406) 293-4354



Redeemed Big 8- PCTC

SKETCH OF CORNER

CERTIFICATION

I, Levi Powell  
 certify the information shown herein is true and correct.  
*Levi Powell*  
 Signature Ground Party Chief

I, Alvah F. Hughes  
 certify that this Corner Record correctly represents work performed by me or under my direction in compliance with the "Corner Recordation Act" (70-22-101, et seq., M.C.A.)  
*Alvah F. Hughes*  
 Signature of Surveyor & Seal

Date: 12/20/2006 Reg. No. 7322-LS

Employer: Kootenai Surveyors Inc.

Office of Clerk and Recorder, County of Lincoln. This "corner

record" was filed for re: 200813 BOOK: CCR CC&R'S PAGE: 11018 Pages: 1

was noted on the cross STATE OF MONTANA LINCOLN COUNTY

book No. TAMMY D. LAUER CLERK AND RECORDER

FEE: \$0.00

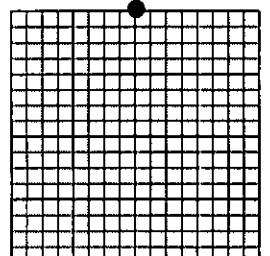
BY: *Donnie Dennis*

TO: FILED

Cross Index No. E 03 T 29N R. 27W P.M., MT

Adopted July 1, 1981, Montana Board of Professional Engineers & Land Surveyors

Sec. 7



• corner this sheet