

CERTIFIED CORNER RECORDATION

Corner S 1/4 S7 T 29 N. R. 27 W. P.M.M. Lincoln County

I. Record: 1902 original GLO survey by Paul S. Bickel: Set a trachite stone, 18x8x6 ins. 12 ins. in the ground, marked 1/4 on the N face from which:

A tamarack, 16 ins. diam., bears S.13°15' W., 26 lks. dist., (17.16 ft.), mkd. 1/4 S18 BT.

A fir, 28 ins. diam., bears N. 50° W., 39 lks. dist., (25.08 ft.), mkd. 1/4 S7 BT.

II. Found:

A larch, 25 ins. diam., bears S. 13° W., 17.16 ft. dist., with visible scribes.

A fir stump, 36 ins. diam., bears N. 50° W., 25.08 ft. dist. with visible scribes.

III. Perpetuation: At the corner point, determined by the original found bearing trees, set a Aluminum pipe 2 1/2 ins. diam., 30 ins. long 28 ins. in the ground, with a 3 1/4 ins. diam. Aluminum cap marked as shown below from which:

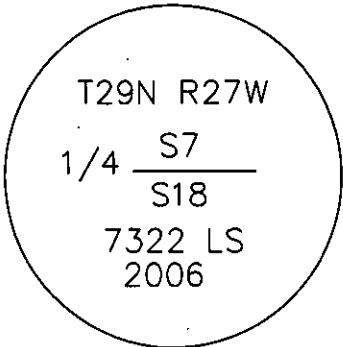
A fir, 13 ins. diam., bears N. 40° W., 14.66 ft. dist., scribed 1/4 S7 BT.

Pointed faces and 6 in. wide red bands to all bearing trees and attached Land Survey Monument and Bearing Tree signs.

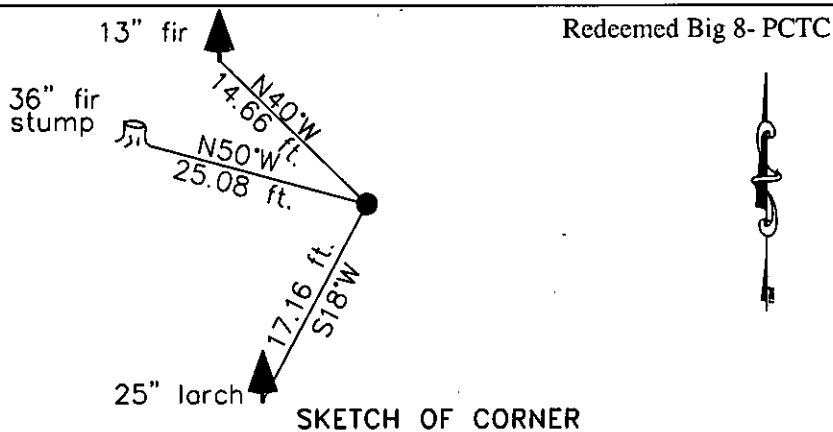
Set a steel post on line 3 ft. West of set monument.

Magnetic declination: 18° East

Equipment used: Hand compass and loggers tape



Kootenai Surveyors Inc., 314 California Av., Libby, MT. 59923 (406) 293-4354



CERTIFICATION

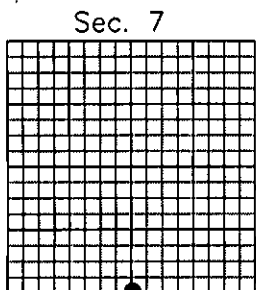
I, Levi Powell
 certify the information shown herein is true and correct.
Levi Powell
 Signature Ground Party Chief

I, Alvah F. Hughes
 certify that this Corner Record correctly represents work performed by me or under my direction in compliance with the "Corner Recordation Act" (70-22-101, et seq., M.C.A.)
Alvah F. Hughes
 Signature of Surveyor & Seal

Date: 11/20/2006 Reg. No. 7322-LS

Employer: Kootenai Surveyors, Inc.

Office of Clerk and Recorder, County of Lincoln This "corner record" was filed for record 200811 BOOK: CCR CC&R'S PAGE: 11016 Pages: 1 was noted on the cross-in STATE OF MONTANA LINCOLN COUNTY book No. RECORDED: 02/06/2007 1:22 KOI: CC&R'S TAMMY D. LAUER CLERK AND RECORDER FEE: \$0.00 BY: *Tammy D. Lauer* TO: FILED



Cross Index No. J 03 T. 29N R. 27W P.M., MT

Adopted July 1, 1981, Montana Board of Professional Engineers & Land Surveyors