

CERTIFIED CORNER RECORDATION

Corner SE Cor. S18 T 29 N. R. 27 W. P.M.M. LINCOLN County

I. Record: 1902 original GLO survey by P. Bickel, set a trachite stone 16x7x3 ins., 11 ins. in the ground, marked with 3 notches on the S. and 5 notches on E. edges from which:

A tamarack, 10 ins. diam., bears N. 8°15' E. 16 lks. dist. (10.56 ft.), mkd. T29N R27W S17 BT.  
A pine, 6 ins. diam., bears S. 18°45' E. 17 lks. dist. (11.22 ft.), mkd. T29N R27W S20 BT.  
A pine, 7 ins. diam., bears S. 34°15' W. 19 lks. dist. (12.54 ft.), mkd. T29N R27W S19 BT.  
A tamarack, 18 ins. diam., bears N. 45° W. 12 lks. dist. (7.92 ft.), mkd. T29N R27W S18 BT.

1964 BLM Remoumentation by R. Larimer : Set an iron post, 30 ins. long, 2 1/2 ins. diam., 27 ins. in the ground, with brass cap mkd. as shown below from which:

A larch, 18 ins. diam., bears N. 45° W., 12 lks. dist., (7.92 ft.) mkd. T29N R27W S18 BT.  
A larch, 6 ins. diam., bears N. 26° E., 41 lks. dist., (27.06 ft.) mkd. T29N R27W S17 BT.  
A larch, 14 ins. diam., bears S. 41° W., 22 lks. dist., (14.52 ft.) mkd. T29N R27W S20 BT.  
A pine, 8 ins. diam., bears S. 67°30' W., 38 lks. dist., (25.08 ft.) mkd. T29N R27W S19 BT.

II. Found: A 2 1/2 ins. diam. iron pipe with a 3 1/4 ins. diam. BLM brass cap 2 ins. above ground and firmly set, from which:

A larch, 11 ins. diam., bears N. 26° E., 27.06 ft. dist., with overgrown face.  
A larch, 18 ins. diam., bears S. 41° E., 14.10 ft. dist., with overgrown face..

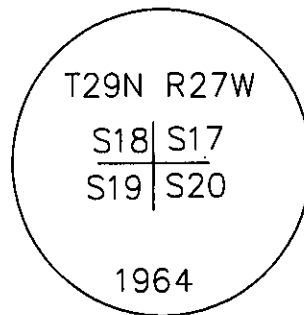
III. Perpetuation: Establish two new bearing trees described below:

A pine, 4 ins. diam., bears S. 58° W., 18.30 ft. dist., scribed X BT.  
A fir, 6 ins. diam., bears N. 4° W., 27.50 ft. dist., scribed X BT.

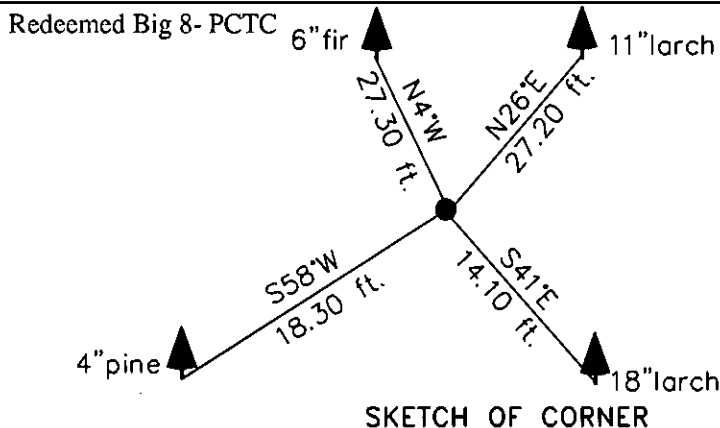
Painted faces and 6 in. wide red bands to all bearing trees and attached Bearing tree and Land Survey Monument signs.

Magnetic declination: 18° East

Equipment used: Hand compass and loggers tape



Kootenai Surveyors Inc., 314 California Av., Libby, MT. 59923 (406) 293-4354



SKETCH OF CORNER

CERTIFICATION

I, Levi Powell  
certify the information shown hereof is true and correct.

Levi Powell  
Signature Ground Party Chief

I, Alvah F. Hughes  
certify that this Corner Record correctly represents work performed by me or under my direction in compliance with the "Corner Recordation Act" (70-22-101, et seq., M.C.A.).

Alvah F. Hughes  
Signature of Surveyor & Seal

Date: 12/28/2006 Reg. No. 7322-157322

Employer: Kootenai Surveyors, Inc.

Office of Clerk and Recorder, County of Lincoln. This "corner

record" was filed for record on 200810 BOOK: CCR CC&R'S PAGE: 11015 Pages: 1

was noted on the cross-index STATE OF MONTANA LINCOLN COUNTY

book No.                      TAMMY D. LAUER CLERK AND RECORDER

FEE: \$0.00

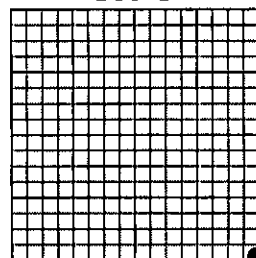
BY:                     

TO: FILED

Cross Index No. N 05 T. 29N R. 27W P.M., MT

Adopted July 1, 1981, Montana Board of Professional Engineers & Land Surveyors

Sec18



• corner this sheet