

CERTIFIED CORNER RECORDATION

Corner S 1/4 S18 T 29 N. R. 27 W. P.M.M. Lincoln County

I. Record: 1902 original GLO survey by Paul S. Bickel: Set a trachite stone 15x9x8 ins. 10 ins. in the ground, marked 1/4 on the N. face from which:

A fir, 7 ins. diam., bears N. 4° E., 50 lks. dist., (33.00 ft.), mkd. 1/4 S 18 BT.
A fir, 6 ins. diam., bears S. 27° E., 28 lks. dist., (16.80 ft.), mkd. 1/4 S 19 BT.

1964 BLM Remonumentation by R. Larimer: Set a iron post, 30 ins. long, 2 1/2 ins. diam., 27 ins. in the ground with brass cap from which:

A fir, 10 ins. diam., bears N. 40° E., 6 lks. dist., (3.96 ft.) mkd. 1/4 S18 BT.
A fir, 7 ins. diam., bears S. 5° W., 7 lks. dist., (4.62 ft.) mkd. 1/4 S19 BT.

II. Found: A 2 1/2 ins. diam. iron pipe with a 3 1/4 ins. diam. BLM brass cap 4 ins. above ground and firmly set from which :

A fir, 10 ins. diam., bears S. 5° W., 4.62 ft. dist., with visible scribing.

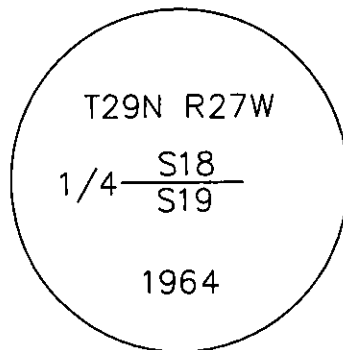
III. Perpetuation: Establish one new bearing tree described below:

A pine, 6 ins. diam., bears N. 30° W., 23.90 ft. dist., scribed 1/4 S18 BT.

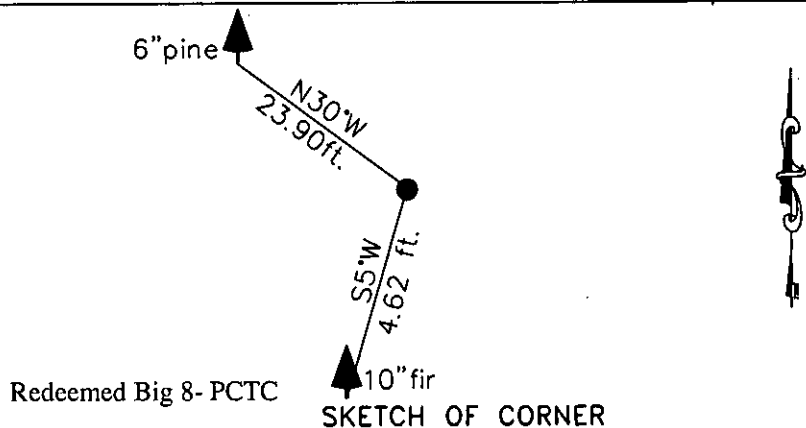
Painted faces and 6 in. wide red bands to all bearing trees and attached Land Survey Monument and Bearing Tree signs.

Magnetic declination: 18° East

Equipment used: Hand compass and loggers tape



Kootenai Surveyors Inc., 314 California Av., Libby, MT. 59923 (406) 293-4354



CERTIFICATION

I, Levi Powell
certify the information shown herein is true and correct.
Levi Powell
Signature Ground Party Chief

I, Alvah F. Hughes
certify that this Corner Record correctly represents work performed by me or under my direction in compliance with the "Corner Recordation Act" (70-22-101, 1st Seq., M.C.A.)
Alvah F. Hughes
Signature of Surveyor & Seal: **ALVAH F. HUGHES**
Date: 12/26/2006 Reg. No. 7322-LS
Employer: Kootenai Surveyors Inc.

Office of Clerk and Recorder, County of Lincoln. This "corner

record" was filed for record on 200807 BOOK: CCR CC&R'S PAGE: 11012 Pages: 1
was noted on the cross-index
book No. STATE OF MONTANA LINCOLN COUNTY
RECORDED: 02/06/2007 1:08 KOI: CC&R'S
TAMMY D. LAUER CLERK AND RECORDER

FEE: \$0.00
TO: FILED

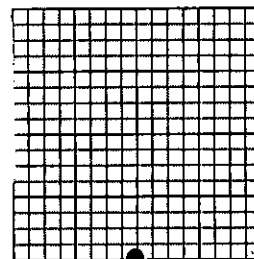
BY: *Tammy D. Lauer*

Cross Index No. N 03 T. 29N R. 27W P.M., MT

Adopted July 1, 1981, Montana Board of Professional Engineers & Land Surveyors

\\Manon\manon-shared\Corner Rec\Redeemed Big 8 PCTC.dwg, 12/29/2006 4:05:34 PM, Konica

Sec.18



• corner this sheet