

CERTIFIED CORNER RECORDATION

Corner S 1/4 S8 T 29 N. R. 27 W. P.M.M. Lincoln County

- I. Record: 1902 original GLO survey by Paul S. Bickel: Set a trachite stone 20x8x4 ins. 15 ins. in the ground, marked 1/4 on the N. face from which:
- A pine, 6 ins. diam., bears N. 29°30' E., 27 lks. dist., (17.82 ft.), mkd. 1/4 S 8 BT.
A pine, 5 ins. diam., bears N. 29°30' W., 10 lks. dist., (6.60 ft.), mkd. 1/4 S 17 BT.
- 1966 BLM Remonumentation by R. Leedy : Set a iron post, 30 ins. long, 2 1/2 ins. diam., 24 ins. in the ground with brass cap from which:
- A pine, 16 ins. diam., bears N. 29°30' E., 27 lks. dist., (17.82 ft.) with visible mks.
A pine snag, 12 ins. diam., bears S. 24° E., 10 lks. dist., (6.60 ft.) with visible mks.
A pine, 12 ins. diam., bears S. 15° E., 26 lks. dist., (17.16 ft.) mkd. 1/4 S17 BT.
- II. Found: A 2 1/2 ins. diam. iron pipe with a 3 1/4 ins. diam. BLM brass cap 4 ins. above ground and firmly set from which :
- A pine snag, 16 ins. diam., bears N. 29° E., 17.80 ft. dist., with visible scribes.
A pine snag, 12 ins. diam., bears S. 15° E. 17.20 ft. dist. with visible scribes.

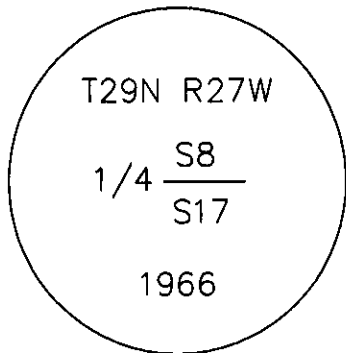
III. Perpetuation: Establish two new bearing trees described below :

- A pine, 14 ins. diam., bears N. 40° E., 63.95 ft. dist., scribed 1/4 S8 BT.
A pine, 21 ins. diam., bears S. 1° E., 101.80 ft. dist., scribed 1/4 S17 BT.

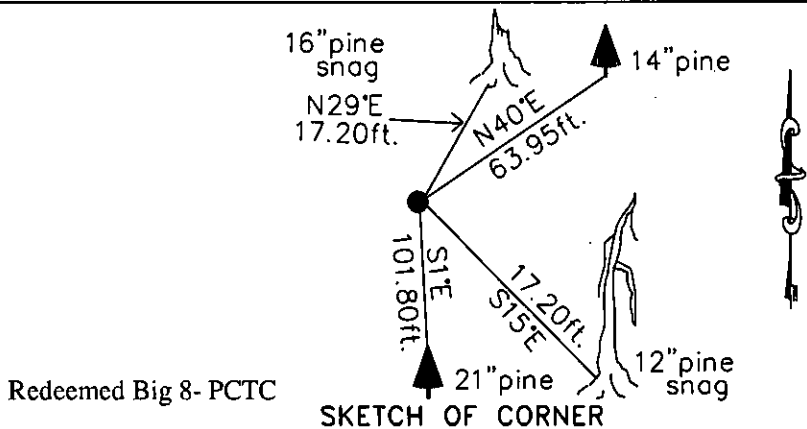
Painted faces and 6 in. wide red bands to all bearing trees and attached Land Survey Monument and Bearing Tree signs.

Magnetic declination: 18° East

Equipment used: Hand compass and loggers tape



Kootenai Surveyors Inc., 314 California Av., Libby, MT. 59923 (406) 293-4354



CERTIFICATION

Levi Powell
I certify the information shown herein is true and correct.
Signature Ground Party Chief

Alvah F. Hughes
I certify that this Corner Record correctly represents work performed by me or under my direction in compliance with the "Corner Recordation Act" (70-22-101, 81, etc., M.C.A.)
Signature of Surveyor & Recorder

Date: 1/11/2007 Reg. No. 7322-LS-322-LS
Employer: Kootenai Surveyors Inc.

Office of Clerk and Recorder, County of Lincoln This "corner

record" was filed for record c 200805 BOOK: CCR CCR'S PAGE: 11010 Pages: 1
was noted on the cross-index STATE OF MONTANA LINCOLN COUNTY
book No. RECORDED: 02/06/2007 1:06 KOI: CCR'S
TAMMY D. LAUFER CLERK AND RECORDER
FEE: \$0.00 BY: *Juanita Dumas*
TO: FILED

Cross Index No. J 07 T. 29N R. 27W P.M., MT

Adopted July 1, 1981, Montana Board of Professional Engineers & Land Surveyors

\\Manon\manon-shared\Corner Rec\Redeemed Big 8 PCTC.dwg, 1/16/2007 10:37:06 AM, Konica

