

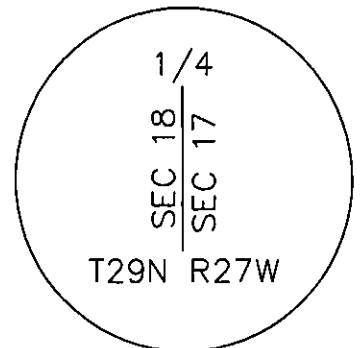
CERTIFIED CORNER RECORDATION

Corner E 1/4 S18 T 29 N. R. 27 W. P.M.M. Lincoln County

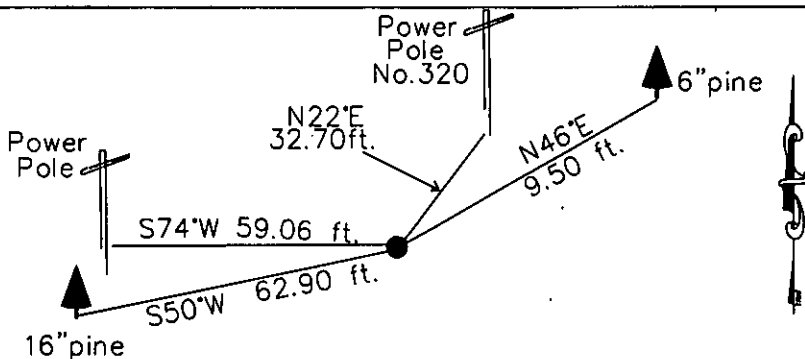
- I. Record: 1902 original GLO survey by Paul S. Bickel: Set a trachite stone 20x8x5 ins. 15 ins. in the ground, marked 1/4 on the W face from which:
- A pine, 10 ins. diam., bears N. 51°30' E., 21 lks. dist., (13.86 ft.), mkd. 1/4 S 17 BT.
A pine, 6 ins. diam., bears S. 68°15' W., 20 lks. dist., (13.20 ft.), mkd. 1/4 S 18BT.
- 1965 Certified Corner Recordation Bk. 1 Pg. 39 Lincoln County Records by N. Berg
1963 LS: Set a iron pipe, 1 1/2 ins. diam., 28 ins. long with brass cap from which:
- A fir, 14 ins. diam., bears N. 70°30' E., 36 lks. dist., mkd. FSRM.
A larch, 10 ins. diam., bears S. 50° W., 29 lks. dist., mkd. FSRM.
- 1972 Certified Corner Recordation, Bk. 271 Pg. 1 Lincoln County Records by J. Ninneman 534 ES: Set a standard brass cap monument from which:
- A G.N. power pole No. 320 bears N. 22° E., 32.70 ft. dist.
A power pole bears S. 74° W., 58.00 ft. dist.
A location poster on cattle guard post, bears N. 70° W., 25.00 ft. dist.

- II. Found: A 3 1/4 ins. diam. brass cap 8 ins. above ground and firmly set from which:
- A G.N. power pole No. 320 , bears N. 22° E., 32.70 ft. dist. with B.T. tag.
A power pole, bears N. 74° W., 59.06 ft. dist. with B.T. tag.

- III. Perpetuation: Establish two new bearing trees described below:
- A pine, 6 ins. diam., bears N. 46° E., 9.50 ft. dist., scribed 1/4 S17 BT.
A pine, 16 ins. diam., bears S. 50° W., 62.90 ft. dist., scribed 1/4 S18 BT.
- Painted faces and 6 in. wide red bands to all bearing trees and attached Land Survey Monument and Bearing Tree signs.
- Magnetic declination: 18° East
- Equipment used: Hand compass and loggers tape



Kootenai Surveyors Inc., 314 California Av., Libby, MT. 59923 (406) 293-4354



Redeemed Big 8- PCTC

SKETCH OF CORNER

CERTIFICATION

I, Kelly Rooney
certify the information shown herein is true and correct.
Kelly Rooney
Signature Ground Party Chief

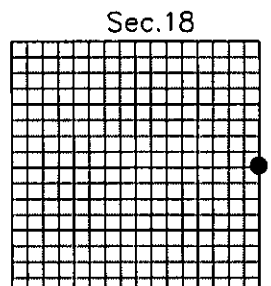
I, Alvah F. Hughes
certify that this Corner Record correctly represents work performed by me or under my direction in compliance with the "Corner Recordation Act" (70-22-10), et seq., M.C.A.)
Alvah F. Hughes
Signature of Surveyor

Date: 12/27/2006 Reg. No. 72222
Employer: Kootenai Surveyors Inc.

Office of Clerk and Recorder, County of Lincoln This "corner
record" was filed for record 200803 BOOK: CCR CC&R'S PAGE: 11008 Pages: 1
was noted on the cross-in STATE OF MONTANA LINCOLN COUNTY
book No. TAMMY D. LAUER CLERK AND RECORDER
RECORDED: 02/06/2007 1:04 KOI: CC&R'S
FEE: \$0.00 BY: Jeanie Bennett Deputy
TO: FILED

Cross Index No. G 05 T. 29N R. 27W P.M., MT

Adopted July 1, 1981, Montana Board of Professional Engineers & Land Surveyors



• corner this sheet