

CERTIFIED LAND CORNER RECORDATION

DESCRIPTION OF CORNER EVIDENCE FOUND, AND ORIGINAL RECORD (IF KNOWN)

ORIGINAL: POST 4' x 4"

PINE 6" N 40° E 22.4'

FIR 5" N 49° W 6.6'

PINE 9" S 27° E 18.5'

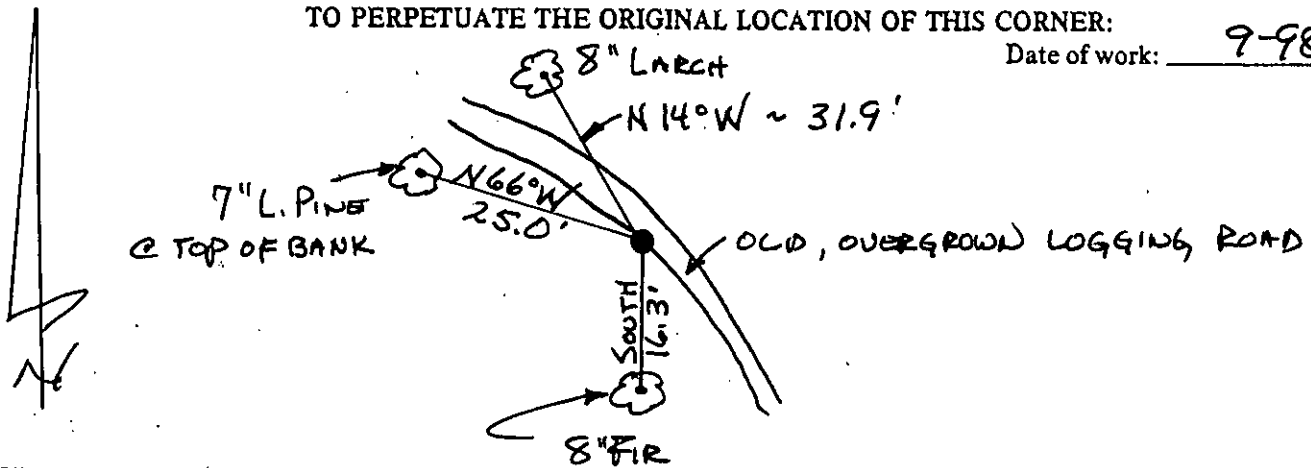
S	C
35	36

FOUND: NOTHING FOUND. CORNER LOST DUE TO LOGGING ROAD FALLS ON COR LOCATION & ALL 3 BT'S

SET: 5/8" x 24" REBAR & 3/4" ALUM. CAP @ RECORD DIST FROM END CC 3/2 ON TOWNSHIP LINE (4.09 CH WEST)

DESCRIPTION OF MONUMENT AND ACCESSORIES ESTABLISHED TO PERPETUATE THE ORIGINAL LOCATION OF THIS CORNER:

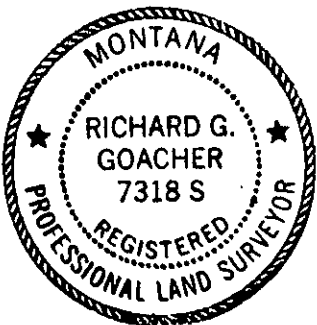
Date of work: 9-98



SKETCH, WITH COURSE AND DISTANCE TO ADJACENT CORNERS IF DETERMINED IN THIS SURVEY. (MAY SKETCH OR PASTE REPRODUCTION ON REVERSE SIDE.)

SEE CERTIFICATE OF SURVEY # 13721

Surveyor's Seal



I, RICHARD G. GOACHER
certify that the information shown herein is true and correct.

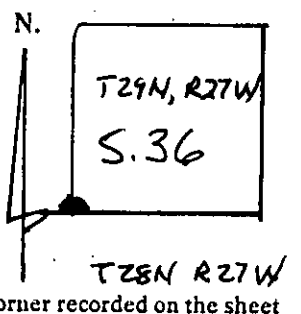
Signature of Ground Party Chief
I, RICHARD G. GOACHER
certify that I have carefully performed or reviewed the work done on the diagrammed corner as reported on this recordation form and approve the same.

Signature of Surveyor

7318-S

Registration Number

DIAGRAM OF CORNER:



Office of Clerk and Recorder, County of Lincoln

This "corner record" was filed for record on the 10th day of May, 192001, was noted on the cross-index plat and is

assigned page No. 10536 in book No. _____

Coral M. Cumming By RB
County Official

Cross Index No. Z-21 T 29N R 27W Mer.