

CERTIFIED LAND CORNER RECORDATION

(REFERENCE FSM 7153.53)

DESCRIPTION OF CORNER EVIDENCE FOUND, AND ORIGINAL RECORD (IF KNOWN)

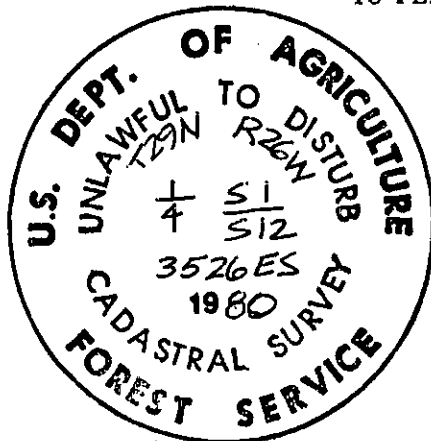
RECORD(GLO SVY.): Set a limestone 15x10x5ins., 10ins. in the ground marked $\frac{1}{4}$ on N. face for the $\frac{1}{4}$ corner common to sections 1 and 12; from which
 A 12 inch fir bears N55°W, 71 links, marked $\frac{1}{4}$ S BT.
 A 26 inch tamarack bears S10°W, 64 links, marked $\frac{1}{4}$ S BT.

FOUND:

A loose stone 13x10x4ins. marked $\frac{1}{4}$ on a face. Found original 25 inch(current diameter)tamarack bearing tree with scribing visible, as described in the official record. No evidence of northwest bearing tree found; there is regeneration of dense lodgepole pine due to past burn. There have been recent mining claim surveys(estimated age is 4 years)that include brushed lines in corner vicinity. The found stone appears to have recently disturbed and bears northeasterly approx. 5 feet from corner position established from original evidence.

DESCRIPTION OF MONUMENT AND ACCESSORIES ESTABLISHED TO PERPETUATE THE ORIGINAL LOCATION OF THIS CORNER:

Date of work: July 1980



We establish the position for this corner from original evidence; we set a 2 $\frac{1}{2}$ inch x 30 inch aluminum pipe marked as shown 20 inches in the ground with a collar of stone at GLO record bearing and distance from the found original 25 inch tamarack bearing tree. We also establish the following accessories:

A 5 inch lodgepole pine bears N12°E, 14.1 feet;
 blazed and scribed $\frac{1}{4}$ S 1 RM.

A location poster on a 8 inch lodgepole pine bears N62°W, 6.0 feet.

Appropriate signs and paint placed on all accessories.

SKETCH, WITH COURSE AND DISTANCE TO ADJACENT CORNERS IF DETERMINED IN THIS SURVEY. (MAY SKETCH OR PASTE REPRODUCTION ON REVERSE SIDE.)

(F) FOUND

(R) RECORD(GLO)

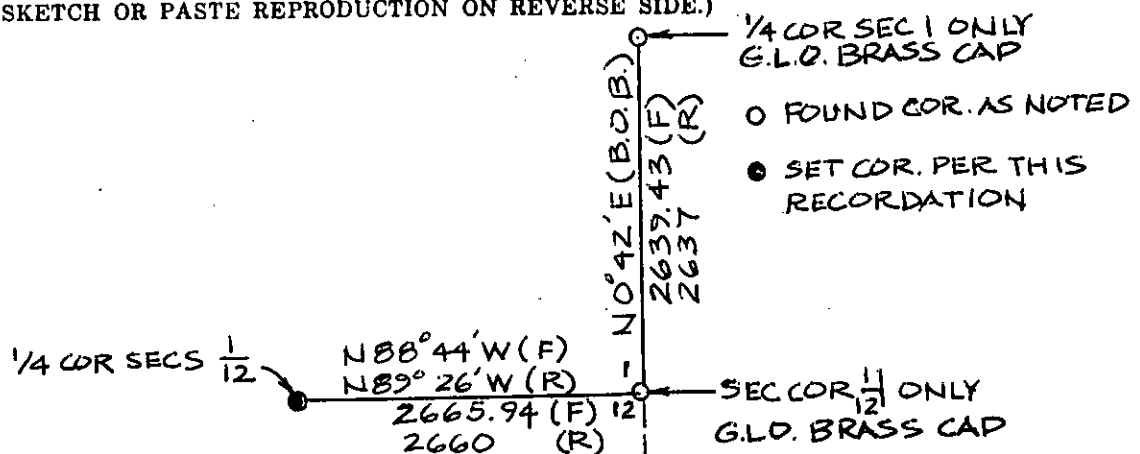
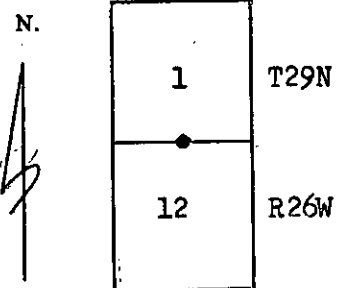


DIAGRAM OF CORNER:



● = $\frac{1}{4}$ Corner recorded on the sheet common to secs. 1 and 12

Surveyor's Seal

I, Clifford E Bertolo-Carnicom
 certify that the information shown herein is true and correct.

Clifford E Bertolo-Carnicom
 Signature of Ground Party Chief

I, Daniel C. Smiley
 certify that I have carefully performed or reviewed the work done on the diagrammed corner as reported on this recordation form and approve the same.

Daniel C. Smiley
 Signature of Surveyor

3526 ES
 Registration Number

Office of Clerk and Recorder, County of Linc

This "corner record" was filed for record on the 19th day of January, 1981, was noted on the cross-index plat and is assigned page No. 972, in book No. 1

County Official

Cross Index No. E-23 T. 29 N R. 26 W Mer.