

CERTIFIED CORNER RECORDATION

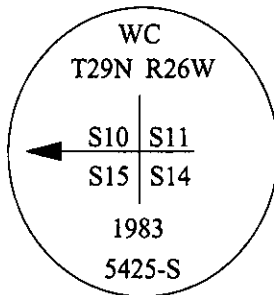
Corner	Witness Corner	Sec. 10,11, 14&15	T. 29N	R. 26W	P.M., MT	Lincoln	County
--------	-------------------	----------------------	--------	--------	----------	---------	--------

- I. 1893 G.L.O. Original Record by James S. Keerl et. al.: Set a sandstone, 14X12X10 ins., 10 ins. in the ground, for cor. of secs. 10,11,14&15, mkd. with 4 notches on the S. and 2 notches on the E. edges.

Established four bearing trees:

- An alder, 6 ins. diam., bears N17 1/2°E, 22 lks. dist., mkd. "T29N R26W S11 BT".
- A fir, 12 ins. diam., bears S48°E, 69 lks. dist., mkd. "T29N R26W S14 BT".
- A spruce, 6 ins. diam., bears S80°W, 34 lks. dist., mkd. "T29N R26W S15 BT".
- An alder, 6 ins. diam., bears N39°W, 17 lks. dist., mkd. "T29N R26W S10 BT".

1983 Certified Corner Recordation by William Condrey No. 5425 S: No trace of the original mkd. sandstone found. Found remains of a rotted tree and stump, which appears to be the S15 BT. Re-establish corner position from calls to creek and this checks with the rotted bearing tree. I accept this position for the true corner, because it falls in edge of Little wolf creek. I set a witness corner, a 30 in. long, 2 1/2 in. diam. aluminum pipe, 24 ins. in the ground, with a 3 in. diam. aluminum cap mkd. as shown:



Established four bearing trees:

- A spruce, 10 ins. diam., bears N43°E, 10.9 ft. dist., mkd. "X" "BT".
- A spruce, 18 ins. diam., bears S03°W, 8.1 ft. dist., mkd. "X" "BT".
- A spruce, 10 ins. diam., bears S80°W, 31.0 ft. dist., mkd. "X" "BT".
- A spruce, 10 ins. diam., bears N10°W, 57.0 ft. dist., mkd. "X" "BT".

- II. Found a 2 1/2 in. diam. aluminum pipe, protruding 14 ins. above the ground, firmly set, in a collar of stone, with a 3 in. diam. aluminum cap mkd. as shown above.

from which:

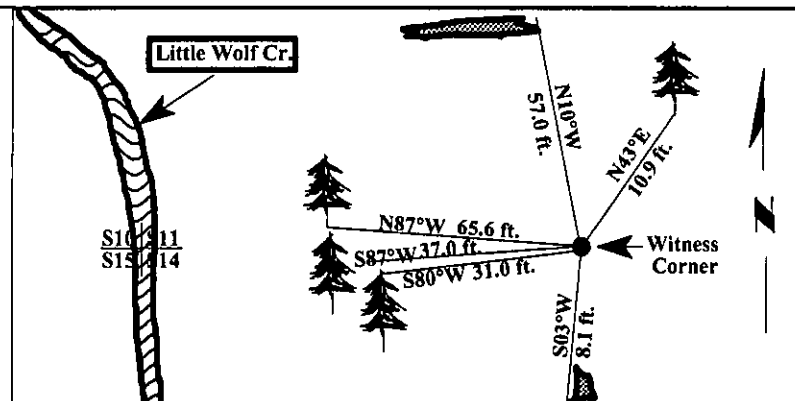
- A spruce, 12 ins. diam., bears N43°E, 10.9 ft. dist., mkd. "X" "BT". (record)
- A spruce stump, 21 ins. diam., bears S03°W, 8.1 ft. dist., mkd. "X" "BT". (record)
- A spruce, 13 ins. diam., bears S80°W, 31.0 ft. dist., mkd. "X" "BT". (record)
- A fallen spruce, 12 ins. diam., bears N10°W, 57.0 ft. dist., mkd. "X" "BT". (record)

- III. Established two new bearing trees:

- A spruce, 22 ins. diam., bears S87°W, 37.0 ft. dist., mkd "T29N R26W S14 BT".
- A spruce, 14 ins. diam., bears N87°W, 65.6 ft. dist., mkd "T29N R26W S10 BT".

Painted bearing trees and attached Land Survey Monument and Bearing Tree signs.

Magnetic Declination: 20° East.



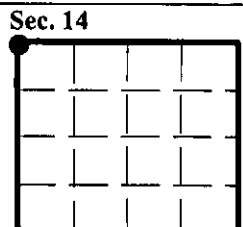
SKETCH OF CORNER.

CERTIFICATION	
I, <u>Rex O. Rice</u>	certify the information shown herein is true and correct.
I, <u>Ronald A. Pearson</u>	certify that this Corner Record correctly represents work performed by me or under my direction in compliance with the "Corner Recordation Act" (70-22-101, et seq., M.C.A.)
Signature of Surveyor & Seal	
Date: <u>12/30/96</u>	
Reg. No.: <u>9008LS</u>	
Employer: <u>U.S. FOREST SERVICE</u>	



Office of Clerk and Recorder, County of LINCOLN. This "corner record" was filed for record on FEB 3, 1997 was noted on the cross-index plat and is assigned page No. 9061, in book No. CORAL M. CUMMINGS

County Official



● - corner this sheet