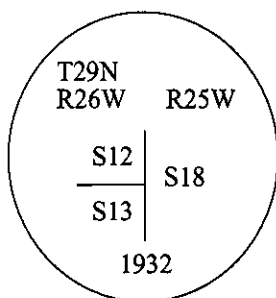


# CERTIFIED CORNER RECORDATION

Corner N.E. Cor. Sec. 13 T. 29N R. 26 W P.M., MT Lincoln County

- I. 1932 B.L.M. Resurvey of the Horse Plains Guide Meridian by Fred L. Cumming et. al.: The proportioned point for cor. of secs. 12 and 13. Set an iron post, 3 ft. long, 2 ins. in diam., 28 ins. in the ground, for cor. of secs. 12 and 13, with brass cap mkd. as shown:



Established two bearing trees:

- A larch, 5 ins. diam., bears S34 1/4°W, 21 lks. dist., mkd. "T29N R26W S13 BT".  
A larch, 5 ins. diam., bears N50 1/2°W, 13 lks. dist., mkd. "T29N R25W S12 BT".

1983 Certified Corner Recordation by William Condrey No. 5425S: Found iron post, with cap mkd. as described in the original BLM records, bearing trees in good condition. Set a carsonite post near corner.

- II. Found a 2 in. diam. iron pipe, protruding 1.5 ft. above the ground, firmly set, with a 2 1/2 in. diam. brass cap, mkd. as shown above.

from which:

- A larch, 10 ins. diam., bears S50°W, 14.5 ft. dist., mkd. with a healed face.  
A larch, 9 ins. diam., bears N74°W, 8.8 ft. dist., mkd. with a healed face.  
Trees found, do not match the 1932 BLM record.

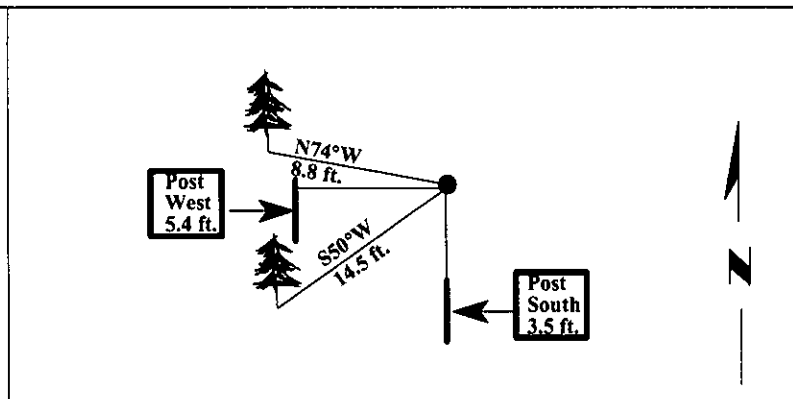
- III. No suitable trees within limits, therefore, from the corner point, I set two posts.

- A 6 ft. steel guard post, bears South, on property line, 3.5 ft. dist.  
A 6 ft. steel guard post, bears West, on property line, 5.4 ft. dist.

Attached Land Survey Monument and Property Boundary decals to the guard posts.

Painted bearing trees and attached Land Survey Monument and Bearing Tree signs.

Magnetic Declination: 20° East.



SKETCH OF CORNER

CERTIFICATION

I, Rex O. Rice  
certify the information shown herein is true and correct.

I, Ronald A. Pearson  
certify that this Corner Record correctly represents work performed by me or under my direction in compliance with the "Corner Recordation Act" (70-22-101, et seq., M.C.A.)

Ronald A. Pearson  
Signature of Surveyor & Seal

Date: 12/30/96

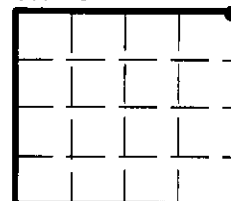
Reg. No.: 9008LS

Employer: U.S. FOREST SERVICE

Office of Clerk and Recorder, County of LINCOLN. This "corner record" was filed for record on FEB 3, 1997 was noted on the cross-index plat and is assigned page No. 9054, in book No. \_\_\_\_\_

CORAL M. CUMMINGS  
County Official

Sec. 13



● - corner this sheet