

## INSTRUCTIONS

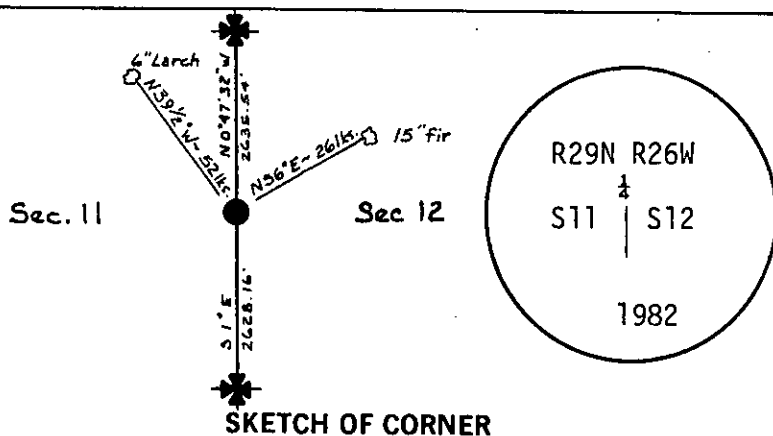
1. Original and/or subsequent record used to evaluate the corner position.
2. Description of evidence found, note discrepancies in the record, state method of establishing lost or obliterated corners.
3. Description of monument and accessories set to perpetuate the corner position.
4. Sketch or corner, show all pertinent data which can best be shown in a sketch example, corner marking, topography ties, position of accessories, etc.
5. Certification must be signed and sealed by Registered Land Surveyor in State of Montana.
6. Fill in Cross Index & Section Diagram at bottom of sheet.

#62-82-5

## CERTIFIED CORNER RECORDATION

Corner W $\frac{1}{2}$  Sec. 12 T. 29N R. 26W P.M.M. Lincoln County

- I. Set an aluminum post 30 ins. long, 2 $\frac{1}{2}$  ins. diam., 22 ins. in the ground, with BLM aluminum cap marked as shown below, from which:  
The original bearing tree:  
A fir, 15 ins. diam., bears N56°E., 21 lks. dist., marked  $\frac{1}{4}$  S BT.  
The new bearing tree:  
A larch, 6 ins. diam., bears N39 $\frac{1}{2}$ °W, 52 lks. dist., marked  $\frac{1}{4}$  S11 BT.  
Buried original stone alongside the aluminum post and raised a collar of stone 3 ft. in diam.
- II. Found 2 $\frac{1}{2}$  ins. diam. aluminum post with BLM aluminum cap and bearing trees as described above. Set fiberglass post alongside corner and painted blazes and corner red.



SKETCH OF CORNER

## Assumed Bearings

## CERTIFICATION

I, \_\_\_\_\_  
certify the information shown herein is true and correct.

Signature Ground Party Chief

I, William Condrey

certify that this Corner Record correctly represents work performed by me or under my direction in compliance with the "Corner Recordation Act" (70-22-101, et seq., M.D.A.)

Signature of Surveyor &amp; Seal

Date: 12-3-82 Reg. No. 54255

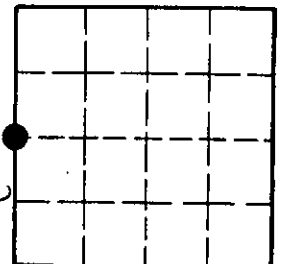
Employer: Associated Surveys, Inc.

Office of Clerk and Recorder, County of Lincoln. This "corner record" was filed for record on the August 25<sup>th</sup> day of 1983 was noted on the cross-index plat and is assigned page No. 2295, in book No. \_\_\_\_\_

Janet BF Siegel by Betty L. Conces  
County Official Deputy

Cross Index No. G-21 T. 29N R. 26W P.M.M.

Sec. 12



• - corner this sheet