

INSTRUCTIONS

1. Original and/or subsequent record used to evaluate the corner position.
2. Description of evidence found, note discrepancies in the record, state method of establishing lost or obliterated corners.
3. Description of monument and accessories set to perpetuate the corner position.
4. Sketch or corner, show all pertinent data which can best be shown in a sketch example, corner marking, topography ties, position of accessories, etc.
5. Certification must be signed and sealed by Registered Land Surveyor in State of Montana.
6. Fill in Cross Index & Section Diagram at bottom of sheet.

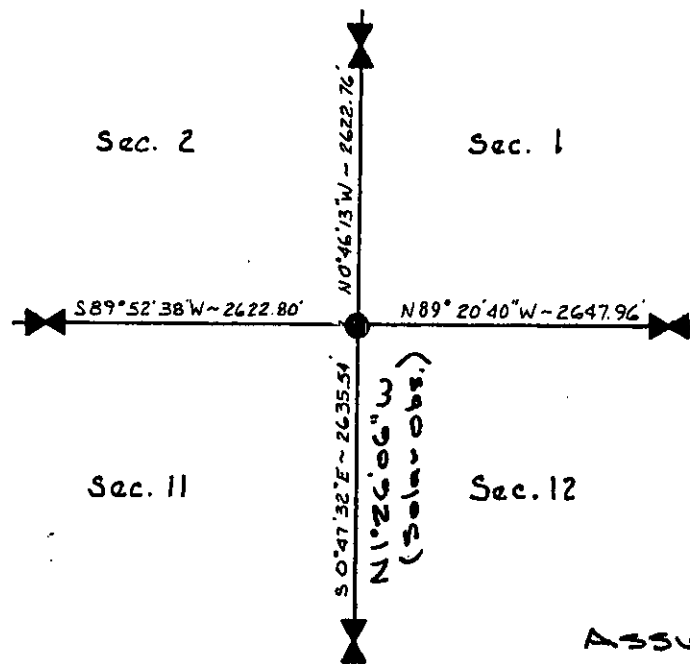
#62-82-5

CERTIFIED CORNER RECORDATION

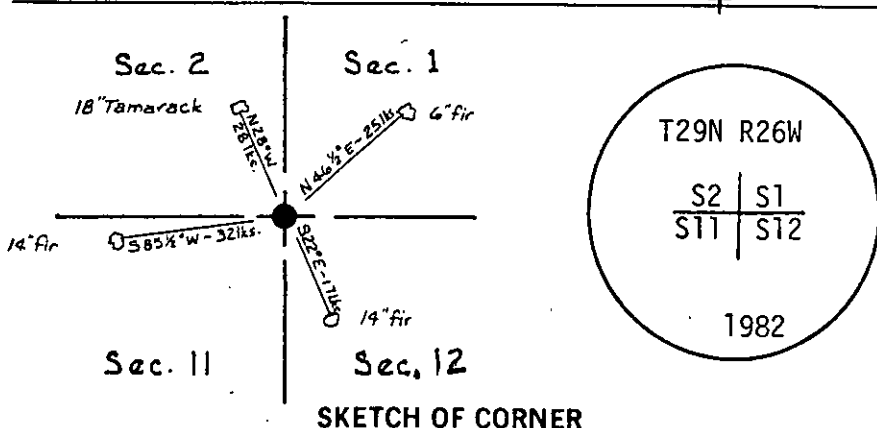
Corner NW Corner Sec. 12 T. 29N R. 26W P.M.M. Lincoln County

- I. Set an aluminum post, 30 ins. long, 2½ ins. diam., 22 ins. in the ground, with BLM aluminum cap marked as shown below from which:
The original bearing trees:
A fir, 14 ins. diam., bears S22°E, 17 lks. dist. marked T29N, R26W S12 BT.
A tamarack, 18 ins. dia., bears N20°W, 28 lks. dist. marked T29N R26W, S2 BT.
The new bearing trees:
A fir, 6 ins. diam., bears N46½°E, 25 lks dist. marked T29N R26W S1 BT.
A fir, 14 ins. diam., bears S85½°W, 32 lks. dist. marked T29N R26W S11 BT.
Buried original stone along side the aluminum post and raised 3 ft. diam. collar of stone.

- II. Found a aluminum post 2½" diam. with BLM Aluminum Cap and bearing trees as described above. Set fiberglass post alongside corner, painted blazes and corner red.



Assumed Bearings



SKETCH OF CORNER

CERTIFICATION

I, _____
certify the information shown herein is true and correct.

Signature Ground Party Chief

I, William Condrey

certify that this Corner Record correctly represents work performed by me or under my direction in compliance with the "Corner Recordation Act" (70-22-101, et seq. M.D.A.)

William Condrey
Signature of Surveyor & Seal

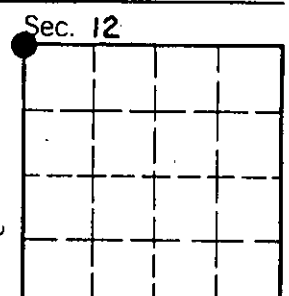
Date: 12-3-82 Reg. No. 5425S

Employer: Associated Surveys, Inc.

Office of Clerk and Recorder, County of Lincoln. This "corner record" was filed for record on the August 25th day of 1982 was noted on the cross-index plat and is assigned page No. 2294, in book No. _____

Janet BF Siegel by Betty L. Conces
County Official deputy

Cross Index No. E-21 T. 29N R. 26W P.M.M.



• - corner this sheet