

INSTRUCTIONS

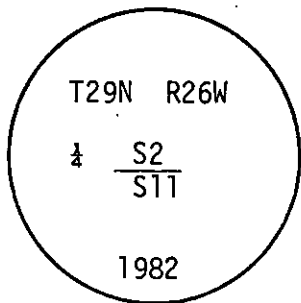
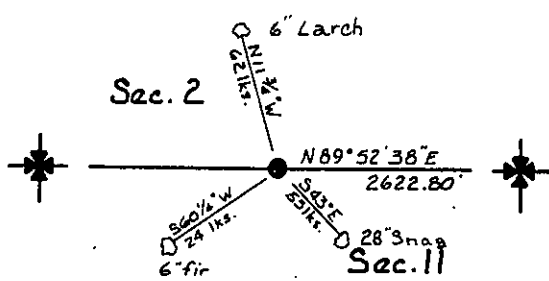
1. Original and/or subsequent record used to evaluate the corner position.
2. Description of evidence found, note discrepancies in the record, state method of establishing lost or obliterated corners.
3. Description of monument and accessories set to perpetuate the corner position.
4. Sketch or corner, show all pertinent data which can best be shown in a sketch example, corner marking, topography ties, position of accessories, etc.
5. Certification must be signed and sealed by Registered Land Surveyor in State of Montana.
6. Fill in Cross Index & Section Diagram at bottom of sheet.

62-82-5

CERTIFIED CORNER RECORDATION

Corner S $\frac{1}{2}$  Sec. 2 T. 29N R. 26W P.M.M. Lincoln County

- I. Set an aluminum post, 30 ins. long, 2 $\frac{1}{2}$  ins. diam., 22 ins. in the ground, with BLM Aluminum cap marked as shown below from which:  
 The original bearing tree:  
 A snag, 28 ins. diam., bears S43°E., 55 lks. dist. marked  $\frac{1}{4}$  S BT.  
 The new bearing trees:  
 A fir, 6 ins. diam., bears S60 $\frac{1}{2}$ °W., 24 lks. dist. marked  $\frac{1}{4}$  S 11 BT.  
 A larch, 6 ins. diam., bears N11.75°W., 62 lks. dist. marked  $\frac{1}{4}$  S 2 BT.  
 Buried original stone alongside the aluminum post.
- II. Found a aluminum post 2 $\frac{1}{2}$  ins. diam. with BLM Aluminum Cap as described above. Set fiberglass post alongside corner painted blazes and corner red.  
 Found Bearing Trees as described above.



Assumed Bearings

CERTIFICATION

I, \_\_\_\_\_ certify the information shown herein is true and correct.

Signature Ground Party Chief

William Condrey

I, \_\_\_\_\_ certify that this Corner Record correctly represents work performed by me or under my direction in compliance with the "Corner Recordation Act" (70-22-101, et seq., M.D.A.)

William Condrey  
 Signature of Surveyor & Seal

Date: 12-3-82 Reg. No. 54255

Employer: Associated Surveys, Inc.

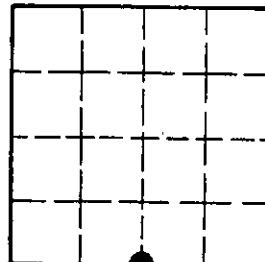
SKETCH OF CORNER

Office of Clerk and Recorder, County of Lincoln. This "corner record" was filed for record on the August 25<sup>th</sup> day of 1982 was noted on the cross-index plat and is assigned page No. 2289, in book No. \_\_\_\_\_

Janet BF Siegel by Betty L. Conces  
 County Official deputy

Cross Index No. E-19 T. 29N R. 26W P.M.M.

Sec. 2



• - corner this sheet