

INSTRUCTIONS

1. Original and or subsequent record used to evaluate the corner position.
2. Description of evidence found, note discrepancies in the record, state method of establishing or obliterated corners.
3. Description of monument and accessories set to perpetuate the corner position.
4. Sketch of corner, show all pertinent data which can best be shown in a sketch example, corner marking, topography ties, position of accessories, etc.
5. Certification must be signed and sealed by Registered Land Surveyor in State of Montana.
6. Fill in Cross Index & Section Diagram at bottom of sheet.

CERTIFIED CORNER RECORDATION

Corner St. Cor. Sections 31 & 36 T. 29N R. 26E & 27W P.M.M. Flathead County
Lincoln

Record: Set a post 4 1/2' long x 4" sq. 24" in the ground for standard corner to Township 29 North Ranges 26E & 27 West marked SC T29N on North face, R26W S31 on East face and R27W S36 on west face from which:

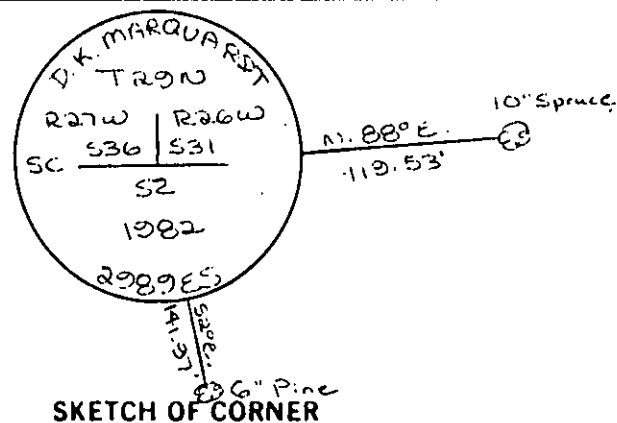
a 8" pine bears N. 64° E. 531KS

a 7" pine bears N. 73° W 1081KS

a 12" pine bears S. 48° E. 771KS

Nothing found. Set aluminum cap by proportion.

See reverse for ties to adjacent corners



SKETCH OF CORNER

CERTIFICATION

I certify the information shown herein is true and correct.

Signature of Land Party Chief
D. K. Marquardt

I certify that this corner Record correctly represents work performed by me or under my direction in compliance with the "State Recordation Act" (70-2-101, et seq., M.D.A.)

Signature of Surveyor & Seal
D.K. Marquardt

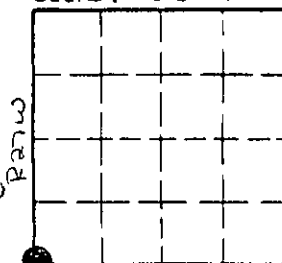
Date 8/4/82 Reg. No. 2989ES

Employer _____

Office of Clerk and Recorder, County of Lincoln. This "corner record" was filed for record on the Aug. 9th day of 1982 was noted on the cross-index plat and is assigned page No. 1855 in book No. _____

Eleanor L. Vaughn by Betty L. Conces
 County Official deputy

Sec. 31-T29N R26W



• corner this sheet

Cross Index No. 2-25 T. 29N R. 27W P.M.M.
2-1 T29N R26W

