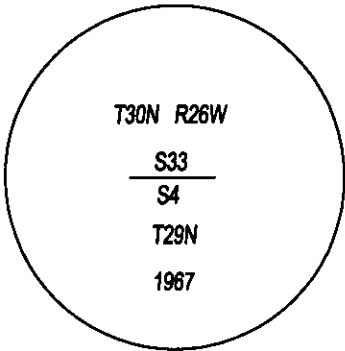
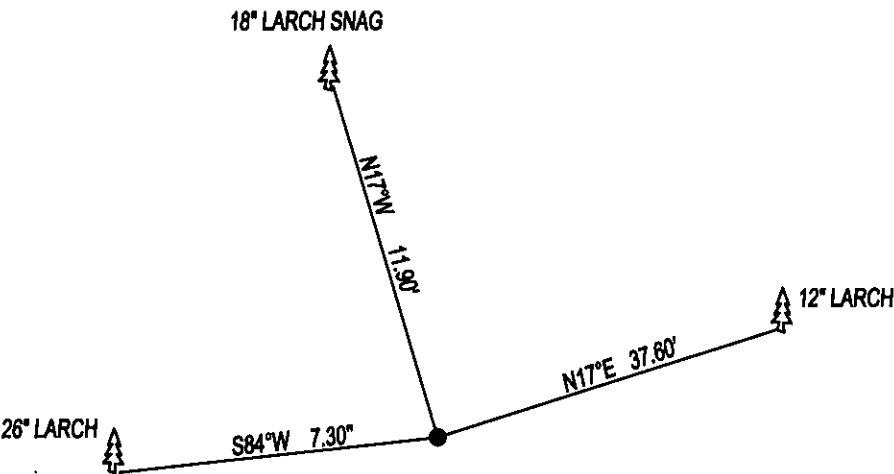


PLSS CORNER RECORDATION

CORNER N1/4 CORNER SEC. 4 T. 29N R. 26W P.M.M., LINCOLN COUNTY

FOUND: 3 1/4" B.L.M. BRASS CAP STAMPED AS SHOWN, FROM WHICH;
26" LARCH BEARS S84°W 7.30' SCRIBE OVERGROWN.
18" LARCH SNAG BEARS N17°W 11.90' SCRIBED 1/4 S4 BT.
12" LARCH BEARS N73°E 37.60' SCRIBED 1/4 S33 BT.
MAINTENANCE: REMOVED SMALL TREES FROM CORNER AREA.
PAINTED RED BANDS ON BT'S AND ATTACHED BEARING TREE TAGS.



SKETCH OF CORNER

CERTIFICATION

I, DAN CROFT
CERTIFY THE INFORMATION SHOWN HEREIN IS TRUE AND CORRECT.

SIGNATURE GROUND PARTY CHIEF

I, MARC J. CARSTENS
CERTIFY THAT THIS CORNER RECORD CORRECTLY REPRESENTS WORK
PERFORMED BY ME OR UNDER MY DIRECTION IN COMPLIANCE WITH THE
"CORNER RECORDATION ACT" (70-22-101, ET SEQ., M.C.A.)

[Signature]
SIGNATURE OF SURVEYOR & SEAL

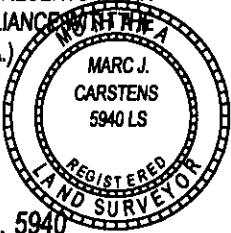
12-18-2014

DATE

CARSTENS SURVEYING

EMPLOYER

LIC. No. 5940



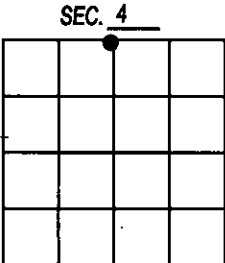
OFFICE OF CLERK AND RECORDER, COUNTY ()
WAS NOTED ON TH

COUNTY OFFICIAL

CROSS INDEX NO. A-11 T. 29N R. 26W P.M.M.

ADOPTED NOVEMBER 7, 2012, MONTANA BOARD OF PROFESSIONAL ENGINEERS & LAND SURVEYORS

255160 BOOK: CCR CC&R'S PAGE: 12178 Pages: 1
STATE OF MONTANA LINCOLN COUNTY
RECORDED: 12/19/2014 10:07 KOI: CC&R'S
TAMMY D. LAUER CLERK AND RECORDER
FEE: \$0.00 BY: *[Signature]*
FOR: CARSTENS LAND SURVEYING P.O. BOX 1374, POLSON, MONTANA



● CORNER THIS SHEET