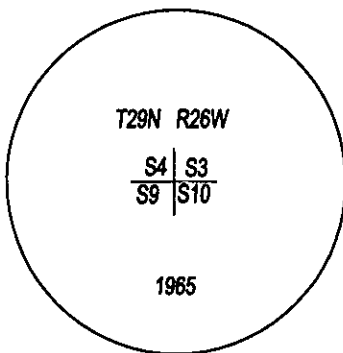
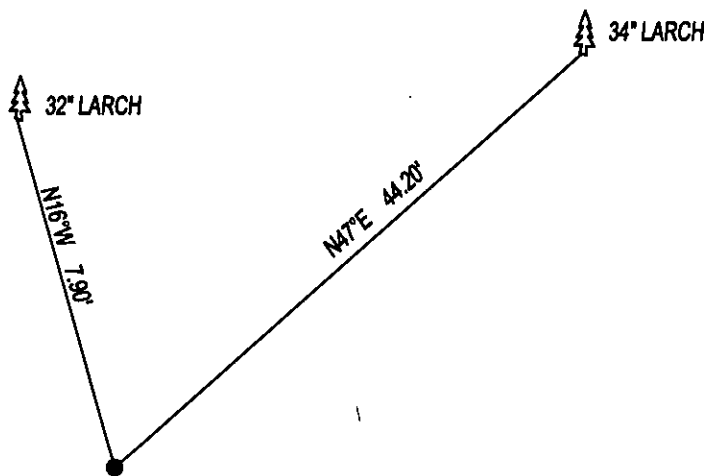


PLSS CORNER RECORDATION

CORNER SE CORNER SEC. 4 T. 29N R. 26W P.M.M., LINCOLN COUNTY

FOUND: 3 1/4" B.L.M. BRASS CAP STAMPED AS SHOWN, FROM WHICH;
34" LARCH BEARS N47°E 44.20" SCRIBE OVERGROWN.
32" LARCH BEARS N16°W 7.90' WITH SOME SCRIBE.

MAINTENANCE: REMOVED SMALL TREES FROM CORNER AREA.
PAINTED RED BANDS ON BT'S AND ATTACHED BEARING TREE TAGS.



SKETCH OF CORNER

CERTIFICATION

I, DAN CROFT
CERTIFY THE INFORMATION SHOWN HEREIN IS TRUE AND CORRECT.

SIGNATURE GROUND PARTY CHIEF

I, MARC J. CARSTENS

CERTIFY THAT THIS CORNER RECORD CORRECTLY REPRESENTS WORK
PERFORMED BY ME OR UNDER MY DIRECTION IN COMPLIANCE WITH THE
"CORNER RECORDATION ACT" (70-22-101, ET SEQ., M.C.A.)



SIGNATURE OF SURVEYOR & SEAL

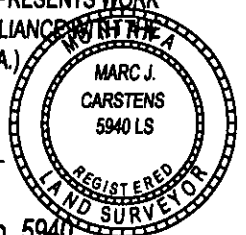
12-18-2014

DATE

CARSTENS SURVEYING

EMPLOYER

LIC. No. 5940



OFFICE OF CLERK AND RECORDER, COUNTY
WAS NOTED ON

COUNTY OFFICIAL

CROSS INDEX NO. E-13 T. 29N R. 26W P.M.M.

ADOPTED NOVEMBER 7, 2012, MONTANA BOARD OF PROFESSIONAL ENGINEERS & LAND SURVEYORS

255159 BOOK: CCR CC&R'S PAGE: 12177 Pages: 1

STATE OF MONTANA LINCOLN COUNTY

RECORDED: 12/19/2014 10:05 KOI: CC&R'S

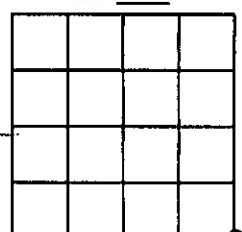
TAMMY D. LAUER CLERK AND RECORDER

FEE: \$0.00

BY: 

FOR: CARSTENS LAND SURVEYING P.O. BOX 1374, POLSON, MONTANA

SEC. 4



● CORNER THIS SHEET