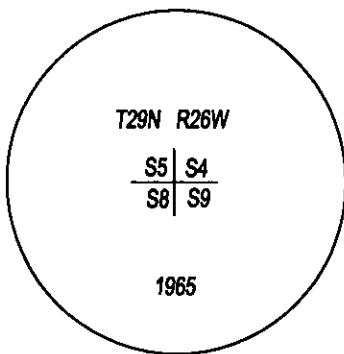
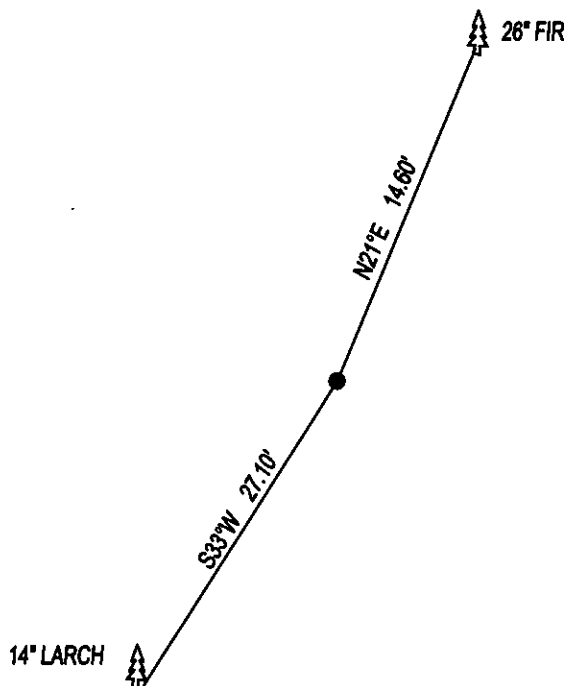


PLSS CORNER RECORDATION

CORNER SW CORNER SEC. 4 T. 29N R. 26W P.M.M., LINCOLN COUNTY

FOUND: 3 1/4" B.L.M. BRASS CAP STAMPED AS SHOWN, FROM WHICH;
26" FIR BEARS N21°E 14.60' SCRIBE OVERGROWN.
14" LARCH BEARS N33°W 27.10' SCRIBE OVERGROW.

MAINTENANCE: REMOVED SMALL TREES FROM CORNER AREA.
PAINTED RED BANDS ON BT'S AND ATTACHED BEARING TREE TAGS.



SKETCH OF CORNER

CERTIFICATION

I, DAN CROFT
CERTIFY THE INFORMATION SHOWN HEREIN IS TRUE AND CORRECT.

SIGNATURE GROUND PARTY CHIEF

I, MARC J. CARSTENS

CERTIFY THAT THIS CORNER RECORD CORRECTLY REPRESENTS WORK
PERFORMED BY ME OR UNDER MY DIRECTION IN COMPLIANCE WITH THE
"CORNER RECORDATION ACT" (70-22-101, ET SEQ., M.C.A.)


SIGNATURE OF SURVEYOR & SEAL

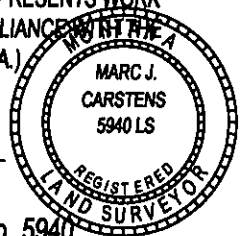
12-18-2014

DATE

CARSTENS SURVEYING

EMPLOYER

LIC. No. 5940

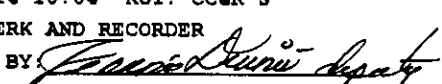


OFFICE OF CLERK AND RECORDER, COUNTY
_____ WAS NOTED ON _____

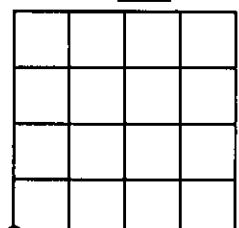
COUNTY OFFICIAL

CROSS INDEX NO. E-9 T. 29N R. 26W P.M.M.

ADOPTED NOVEMBER 7, 2012, MONTANA BOARD OF PROFESSIONAL ENGINEERS & LAND SURVEYORS

255158 BOOK: CCR CC&R'S PAGE: 12176 Pages: 1
STATE OF MONTANA LINCOLN COUNTY
RECORDED: 12/19/2014 10:04 KOI: CC&R'S
TAMMY D. LAUER CLERK AND RECORDER
FEE: \$0.00 BY 
FOR: CARSTENS LAND SURVEYING P.O. BOX 1374, POLSON, MONTANA

SEC. 4



● CORNER THIS SHEET