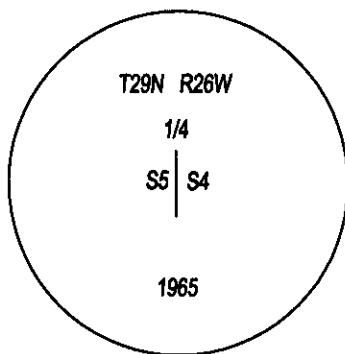
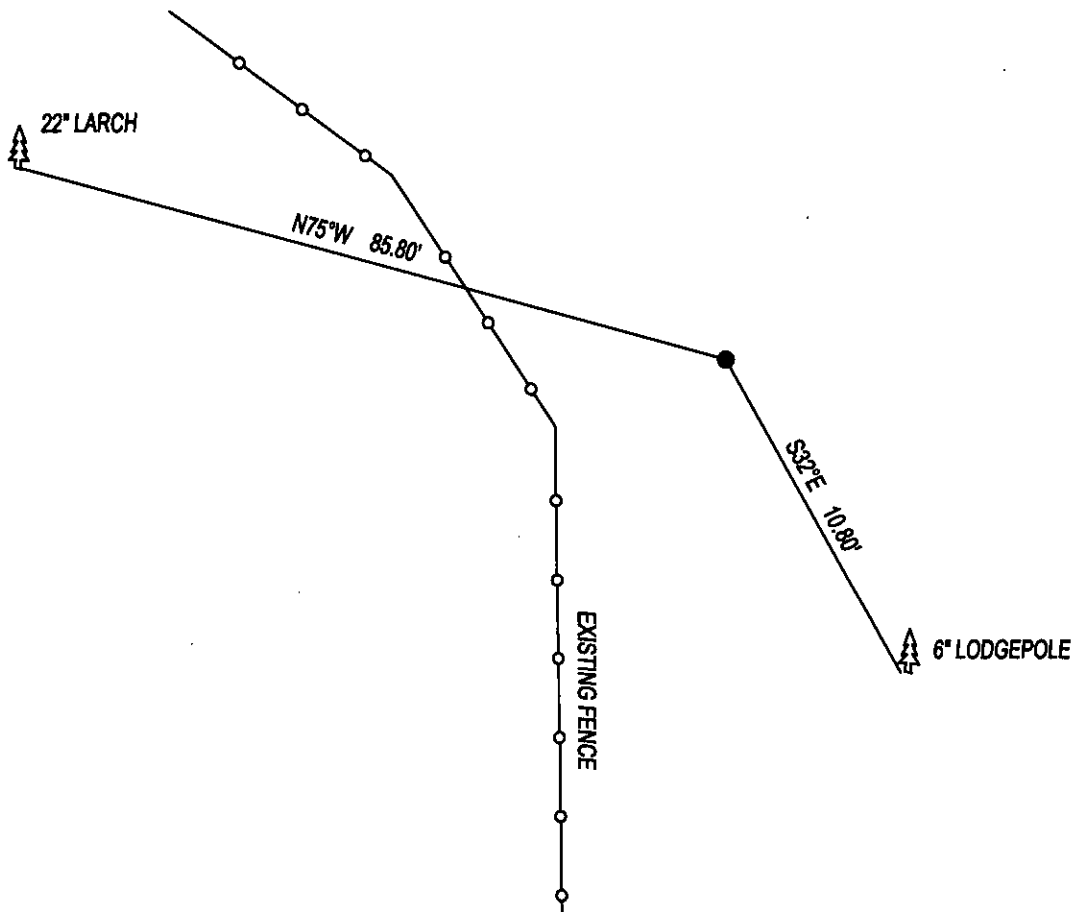


PLSS CORNER RECORDATION

CORNER W 1/4 CORNER SEC. 4 T. 29N, R. 26W, P.M.M., LINCOLN COUNTY

FOUND: 3 1/4" B.L.M. BRASS CAP STAMPED AS SHOWN, FROM WHICH;
22" LARCH BEARS N75°W 85.80' SCRIBE OVERGROWN.

MAINTENANCE: REMOVED SMALL TREES FROM CORNER AREA.
NEW BT, 6" LODGEPOLE BEARS S32°E 10.80' SCRIBED RM.
PAINTED RED BANDS ON BT'S AND ATTACHED BEARING TREE TAGS.



SKETCH OF CORNER

CERTIFICATION

I, DAN CROFT
CERTIFY THE INFORMATION SHOWN HEREIN IS TRUE AND CORRECT.

SIGNATURE GROUND PARTY CHIEF

I, MARC J. CARSTENS

CERTIFY THAT THIS CORNER RECORD CORRECTLY REPRESENTS WORK
PERFORMED BY ME OR UNDER MY DIRECTION IN COMPLIANCE WITH THE
"CORNER RECORDATION ACT" (70-22-101, ET SEQ., M.C.A.)



SIGNATURE OF SURVEYOR & SEAL

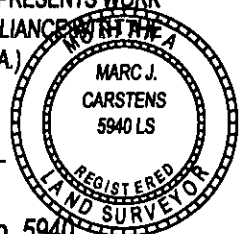
12-18-2014

DATE

CARSTENS SURVEYING

EMPLOYER

LIC. No. 5940

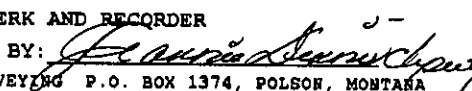


OFFICE OF CLERK AND RECORDER, COUNTY ()
WAS NOTED ON TH

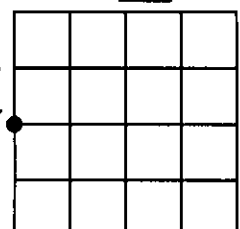
COUNTY OFFICIAL

CROSS INDEX NO. C-9 T. 29N, R. 26W, P.M.M.

ADOPTED NOVEMBER 7, 2012, MONTANA BOARD OF PROFESSIONAL ENGINEERS & LAND SURVEYORS

255157 BOOK: CCR CC&R'S PAGE: 12175 Pages: 1
STATE OF MONTANA LINCOLN COUNTY
RECORDED: 12/19/2014 10:02 KOI: CC&R'S
TAMMY D. LAUER CLERK AND RECORDER
FEE: \$0.00 BY: 
FOR: CARSTENS LAND SURVEYING P.O. BOX 1374, POLSON, MONTANA

SEC. 4



● CORNER THIS SHEET