

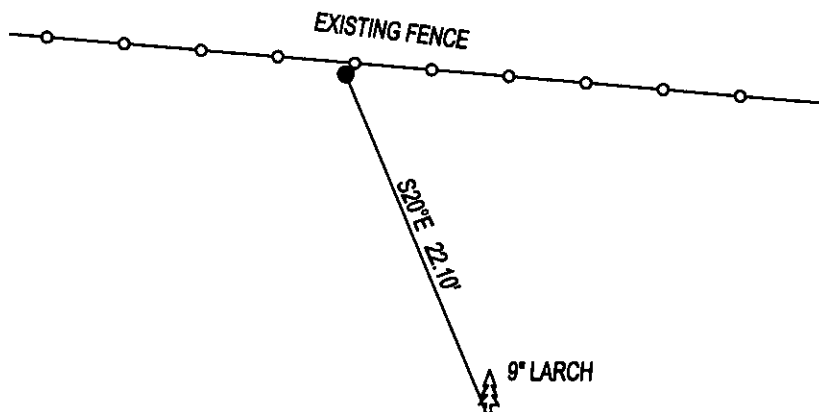
PLSS CORNER RECORDATION

CORNER N1/16 CORNER SEC. 4&5 T. 29N, R. 26W, P.M.M., LINCOLN COUNTY

RECORD: NONE

FOUND: NOTHING

PERPETUATION: SET A 5/8"x24" REBAR WITH YELLOW PLASTIC CAP STAMPED AS SHOWN, FROM WHICH;
9° LARCH BEARS S20°E 22.10' SCRIBED RM.
SET STEEL POST'S 1 FOOT EAST AND 1 FOOT SOUTH OF CORNER.



SKETCH OF CORNER

CERTIFICATION

I, DAN CROFT
CERTIFY THE INFORMATION SHOWN HEREIN IS TRUE AND CORRECT.

SIGNATURE GROUND PARTY CHIEF

I, MARC J. CARSTENS
CERTIFY THAT THIS CORNER RECORD CORRECTLY REPRESENTS WORK
PERFORMED BY ME OR UNDER MY DIRECTION IN COMPLIANCE WITH THE
"CORNER RECORDATION ACT" (70-22-101, ET SEQ., M.C.A.)



SIGNATURE OF SURVEYOR & SEAL

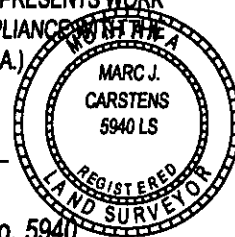
12-18-2014

DATE

CARSTENS SURVEYING

EMPLOYER

LIC. No. 5940

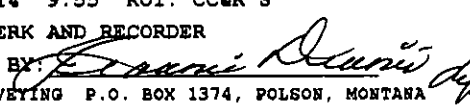


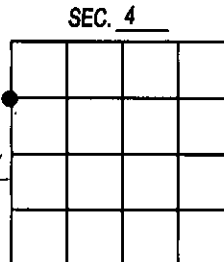
OFFICE OF CLERK AND RECORDER, COUN
_____ WAS NOTED O

COUNTY OFFICIAL

CROSS INDEX NO. B-9 T. 29N R. 26W, P.M.M.

ADOPTED NOVEMBER 7, 2012, MONTANA BOARD OF PROFESSIONAL ENGINEERS & LAND SURVEYORS

255155 BOOK: CCR CC&R'S PAGE: 12173 Pages: 1
STATE OF MONTANA LINCOLN COUNTY
RECORDED: 12/19/2014 9:55 KOI: CC&R'S
TAMMY D. LAUER CLERK AND RECORDER
FEE: \$0.00 BY: 
FOR: CARSTENS LAND SURVEYING P.O. BOX 1374, POLSON, MONTANA



● CORNER THIS SHEET