

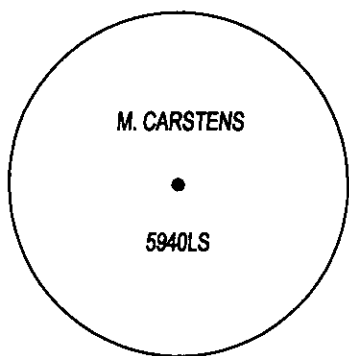
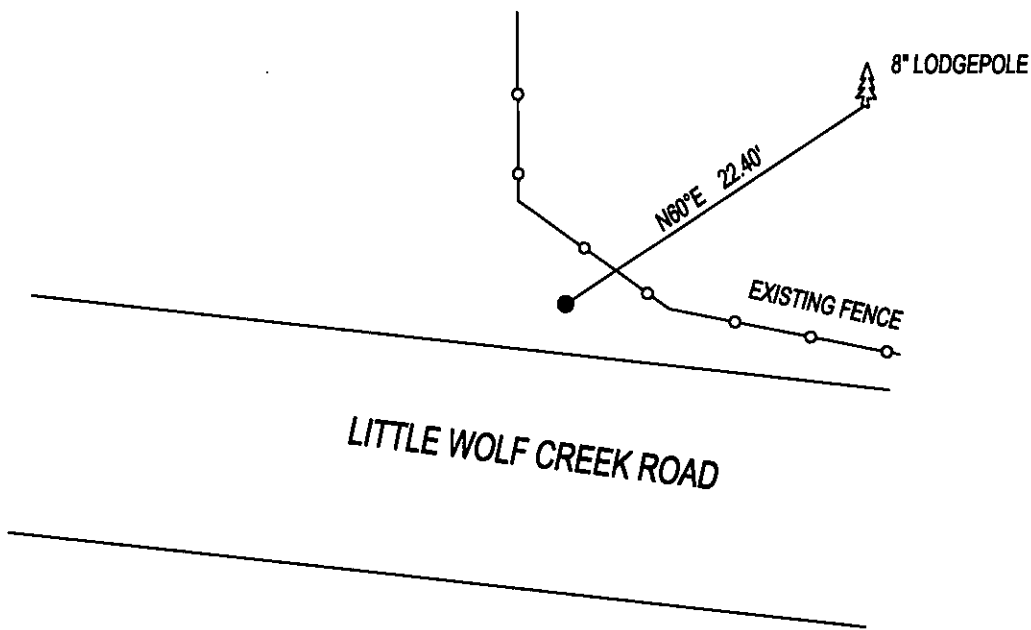
# PLSS CORNER RECORDATION

CORNER S1/16 CORNER SEC. 4&5 T. 29N, R. 26W, P.M.M., LINCOLN COUNTY

RECORD: NONE

FOUND: NOTHING

PERPETUATION: SET A 5/8"x24" REBAR WITH YELLOW PLASTIC CAP STAMPED AS SHOWN, FROM WHICH;  
35° FIR BEARS N60°E 22.40' SCRIBED RM.  
SET STEEL POSTS 2 FEET NORTH AND 3 FEET EAST OF CORNER.



SKETCH OF CORNER

## CERTIFICATION

I, DAN CROFT  
CERTIFY THE INFORMATION SHOWN HEREIN IS TRUE AND CORRECT.

SIGNATURE GROUND PARTY CHIEF

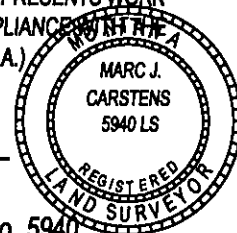
I, MARC J. CARSTENS  
CERTIFY THAT THIS CORNER RECORD CORRECTLY REPRESENTS WORK  
PERFORMED BY ME OR UNDER MY DIRECTION IN COMPLIANCE WITH THE  
"CORNER RECORDATION ACT" (70-22-101, ET SEQ., M.C.A.)

  
SIGNATURE OF SURVEYOR & SEAL

12-18-2014  
DATE

LIC. No. 5940

CARSTENS SURVEYING  
EMPLOYER



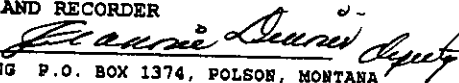
OFFICE OF CLERK AND RECORDER, COUNTY  
\_\_\_\_\_ WAS NOTED ON 1

COUNTY OFFICIAL

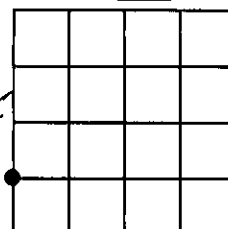
CROSS INDEX NO. D-9 T. 29N, R. 26W, P.M.M.

ADOPTED NOVEMBER 7, 2012, MONTANA BOARD OF PROFESSIONAL ENGINEERS & LAND SURVEYORS

255153 BOOK: CCR CC&R'S PAGE: 12171 Pages: 1

STATE OF MONTANA LINCOLN COUNTY  
RECORDED: 12/19/2014 9:45 KOI: CC&R'S  
TAMMY D. LAUER CLERK AND RECORDER  
FEE: \$0.00 BY:   
FOR: CARSTENS LAND SURVEYING P.O. BOX 1374, POLSON, MONTANA

SEC. 4



● CORNER THIS SHEET