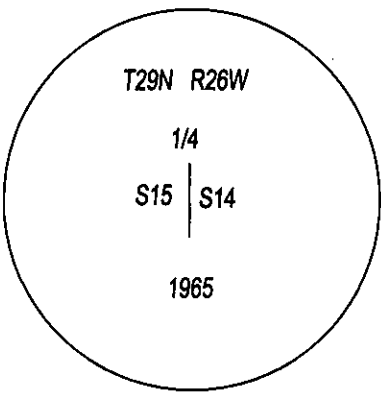
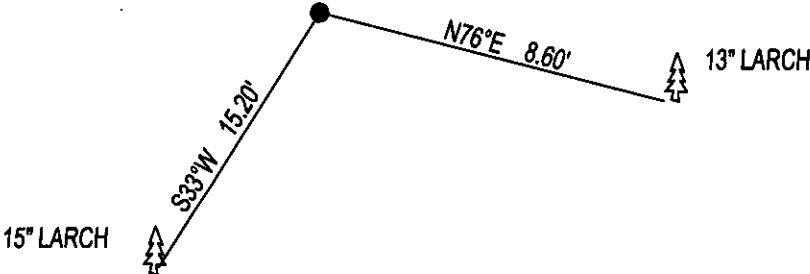


CERTIFIED CORNER RECORDATION

CORNER WEST 1/4 SEC 14 T. 29N, R. 26W, P.M.M., LINCOLN COUNTY

FOUND: 3 1/4" BLM BRASS CAP STAMPED AS SHOWN, FROM WHICH;
13" LARCH BEARS S76°E, 8.60 WITH OVERGROWN SCRIBE.
15 LARCH BEARS S33°W, 15.20 WITH OVERGROWN SCRIBE.

MAINTENANCE: REMOVED BRUSH AND TREE LIMBS FROM CORNER AREA.
SET STEEL POSTS 2 FEET NORTH AND 2 FEET EAST OF CORNER, PAINTED RED BANDS ON BT'S.

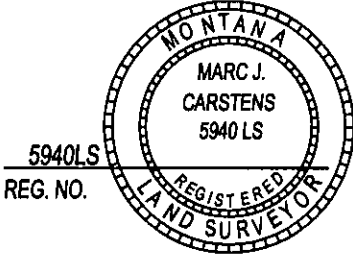


SKETCH OF CORNER

CERTIFICATION
I, DAN CROFT
CERTIFY THE INFORMATION SHOWN HEREIN IS TRUE AND CORRECT.

SIGNATURE GROUND PARTY CHIEF
I, MARC J. CARSTENS
CERTIFY THAT THIS CORNER RECORD CORRECTLY REPRESENTS WORK
PERFORMED BY ME OR UNDER MY DIRECTION IN COMPLIANCE WITH THE
"CORNER RECORDATION ACT" (70-22-101, ET SEQ., M.C.A.)

SIGNATURE OF SURVEYOR & SEAL
5-10-2014
DATE
CARSTENS SURVEYING
EMPLOYER

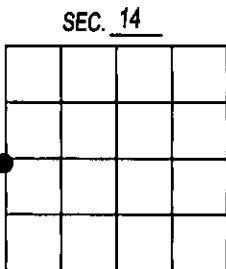


OFFICE OF CLERK AND RECORDER, (THIS "CORNER RECORD" WAS FILED
AND IS ASSIGNED PAGE NO. _____

251742 BOOK: CCR CC&R'S PAGE: 12116 Pages: 1
STATE OF MONTANA LINCOLN COUNTY
RECORDED: 06/11/2014 10:35 KOI: CC&R'S
TAMMY D. LAUER CLERK AND RECORDER
FEE: \$0.00 BY:
FOR: CARSTENS LAND SURVEYING P.O. BOX 1374, POLSON, MONTANA

COUNTY OFFICIAL
CROSS INDEX NO. L-17 T. 29N, R. 26W, P.M.M.

ADOPTED JULY 1, 1981, MONTANA BOARD OF PROFESSIONAL ENGINEERS & LAND SURVEYORS



● CORNER THIS SHEET