

CERTIFIED CORNER RECORDATION

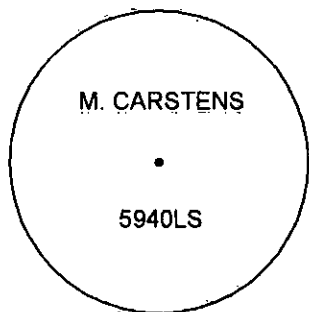
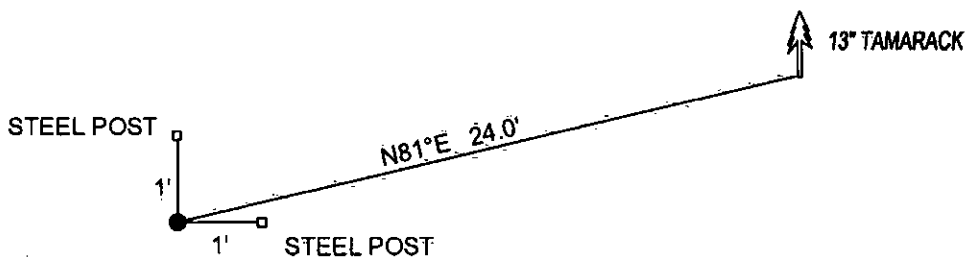
Corner NE 1/16 CORNER SEC. 32 T. 29N R. 26W P.M.M. County LINCOLN

RECORD: NONE

FOUND: NOTHING

SET: 5/8" REBAR 24" LONG WITH YELLOW PLASTIC CAP STAMPED AS SHOWN, FROM WHICH:

13" TAMARACK BEARS N81°E, 24.0' SCRIBED RM.
 SET 5 FOOT STEEL POSTS 2 FOOT NORTH AND 2 FOOT EAST OF CORNER.
 ATTACHED BY SIGNS AND PAINTED A RED 6" BAND AND SCRIBE RED.



SKETCH OF CORNER

CERTIFICATION

DAN CROFT

certify the information shown herein is true and correct.

Signature Ground Party Chief

MARC J. CARSTENS

certify that this Corner Record correctly represents work performed by me or under my direction in compliance with the "Corner Recordation Act" (10-22-101, et seq., M.C.A.)

Marc J. Carstens

Signature of Surveyor & Seal

REGISTERED
LAND SURVEYOR

**MARC J.
CARSTENS**

5940LS

Date: 10-2010 Reg. No. 5940LS

Employer: CARSTENS LAND SURVEYING

Office of Clerk and Recorder, County of LINCOLN, This "corner record" was filed for record on 229183 BOOK: CCR CC&R'S PAGE: 11569 Pages: 2

STATE OF MONTANA LINCOLN COUNTY

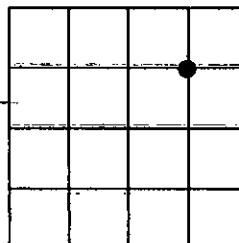
RECORDED: 10/21/2010 12:34 KOI: CC&R'S

TAMMY D. LAUER CLERK AND RECORDER

FEE: \$0.00 BY: *Tammy D. Lauer*

TO: CARSTENS LAND SURVEYING P.O. BOX 1374, POLSON, MONTANA

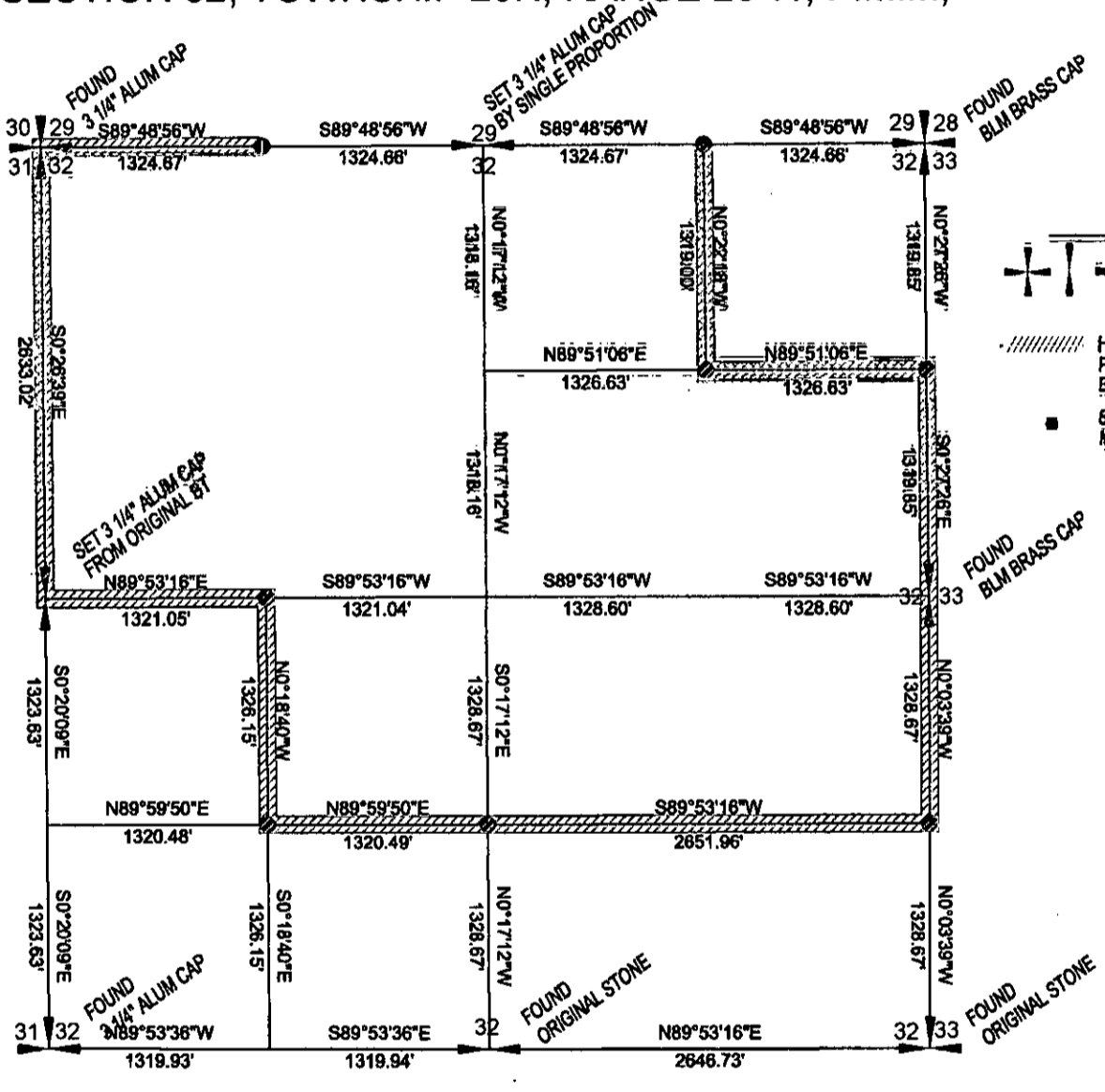
Sec. 32




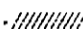
• corner this sheet

Cross Index No. W-8 T. 29N R. 26W P.M.M.

SECTION 32, TOWNSHIP 29N, RANGE 26 W, P.M.M,



LEGEND

-  SECTION OR 1/4 CORNER AS NOTED
-  HIGHLIGHTED LINE - BOUNDARY SURVEYED, POSTED W/ 5\"/>