

CERTIFIED CORNER RECORDATION

Corner E1/4 CORNER SEC.30 T. 29N R. 26W P.M.M. County LINCOLN

GLO RECORD: SET A POST 3 FOOT LONG 3 INCH SQUARE, MARKED 1/4 S ON NORTH FACE, FROM WHICH:

6" BLACK PINE BEARS N27°W, 18.48' SCRIBED 1/4 S BT.

6" BLACK PINE BEARS N60 1/2°E, 14.52' SCRIBED 1/4 S BT.

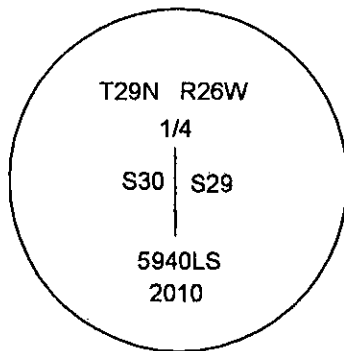
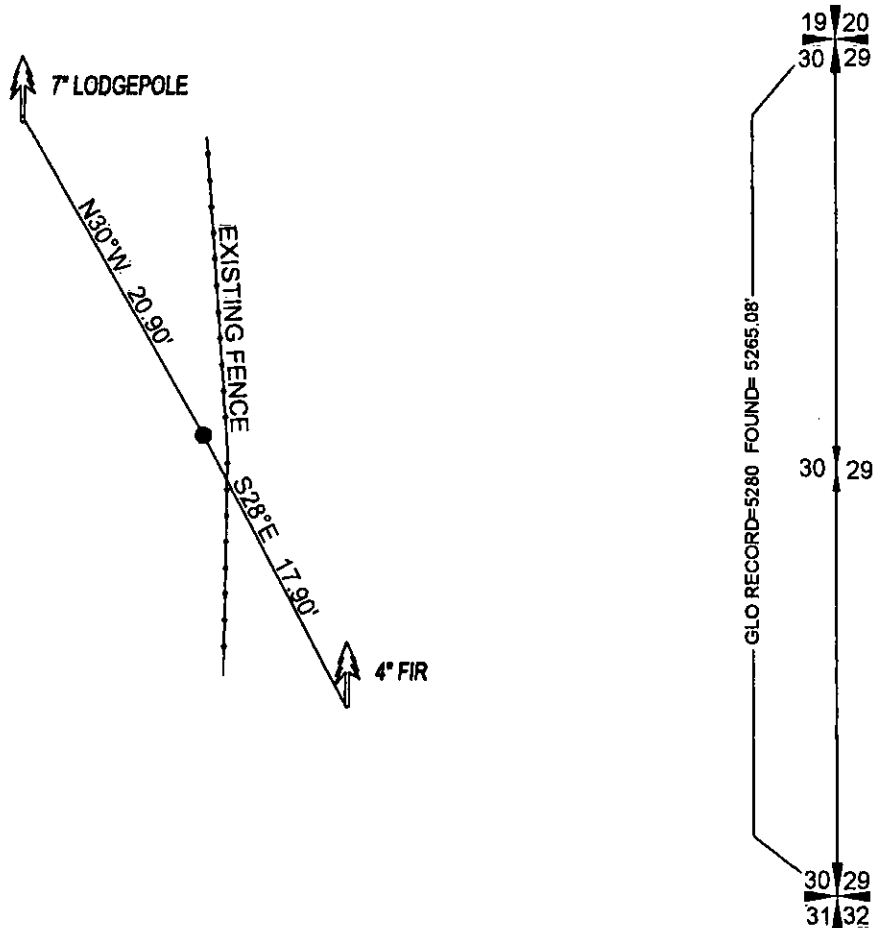
FOUND: NO EVIDENCE OF POST OR BEARING TREES..

SET: REESTABLISHED CORNER BY SINGLE PROPORTION, SET STANDARD 3 1/4" ALUM CAP STAMPED AS SHOWN, FROM WHICH:

4" FIR BEARS S28°E, 17.90' SCRIBED 1/4 RM.

7" LODGEPOLE BEARS N30°W, 20.90' SCRIBED 1/4 RM.

ATTACHED BT TAGS AND PAINTED A RED 6" BAND AND SCRIBE RED



SKETCH OF CORNER

CERTIFICATION

DAN CROFT

certify the information shown herein is true and correct.

Signature Ground Party Chief

MARC J. CARSTENS

certify that this Corner Record correctly represents work performed by me or under my direction in compliance with the "Corner Recordation Act" (70-22-101, et seq., M.C.A.)

Signature of Surveyor & Seal



Date: 10-2010 Reg. No. 5940 LS

Employer: CARSTENS LAND SURVEYING

Office of Clerk and Recorder, County of LINCOLN . This "corner

record" was filed for record on 229178 BOOK: CCR CC&R'S PAGE: 11564 Pages: 1

STATE OF MONTANA LINCOLN COUNTY

was noted on the cross-index pl RECORDED: 10/21/2010 12:27 KOI: CC&R'S

TAMMY D. LAUER CLERK AND RECORDER

book No. FEE: \$0.00

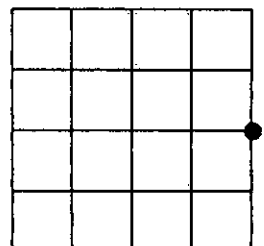
BY Marc J. Carstens Deputy

TO: CARSTENS LAND SURVEYING P.O. BOX 1374, POLSON, MONTANA

Cross Index No. T-5 T. 29N R. 26W PMM

Adopted July 1, 1981, Montana Board of Professional Engineers & Land Surveyors

Sec. 30



• corner this sheet