

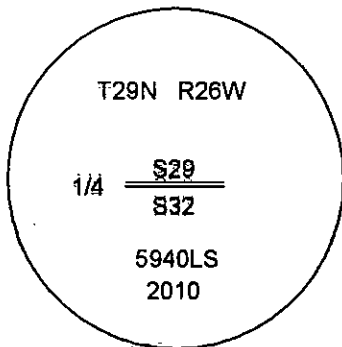
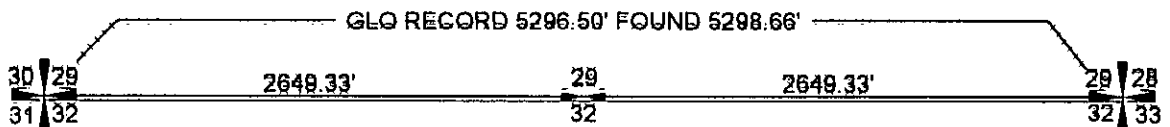
CERTIFIED CORNER RECORDATION

Corner N1/4 CORNER SEC.32 T. 29N R. 26W P.M.M. County LINCOLN

GLO RECORD: SET A POST 3 FOOT LONG 3 INCH SQUARE, MARKED 1/4 S ON NORTH FACE,
DUG PITS 18x18x12 INCHES EAST AND WEST OF POST 5 1/2 FEET, RAISED A MOUND OF
EARTH 1 1/2 FEET HIGH, 3 1/2 FEET AT BASE AROUND POST.

FOUND: NO EVIDENCE OF POST OR PITS, CORNER POSITION FALLS IN HAY FIELD.

SET: REESTABLISHED CORNER BY SINGLE PROPORTION, SET STANDARD 3 1/4" ALUM CAP STAMPED AS SHOWN.
BURIED MONUMENT 10 INCHES BELOW GROUND.



SKETCH OF CORNER

CERTIFICATION

I, DAN CROFT
certify the information shown herein is true and correct.

Signature Ground Party Chief

I, MARCO J. CARSTENS
certify that this Corner Record correctly represents work
performed by me or under my direction in compliance with
the "Corner Recordation Act" (70-22-101 et seq., M.C.A.)

[Signature]
Signature of Surveyor & Seal



Date: 10-2010 Reg. No. 5940 LS

Employer: CARSTENS LAND SURVEYING

Office of Clerk and Recorder, County of LINCOLN This "corner

record" was filed for record on 229177 BOOK: CCR CC&R'S PAGE: 11563 Pages: 1

was noted on the cross-index; STATE OF MONTANA LINCOLN COUNTY

book No. TAMMY D. LAUER CLERK AND RECORDER

FEE: \$0.00

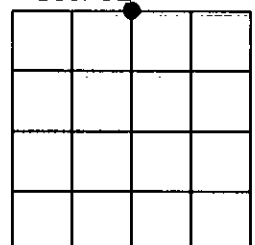
BY [Signature] Deputy

TO: CARSTENS LAND SURVEYING P.O. BOX 1374, POLSON, MONTANA

Cross Index No. V-7 T. 29N R. 26W PMM

Adopted July 1, 1981, Montana Board of Professional Engineers & Land Surveyors

Sec. 32



• corner this sheet