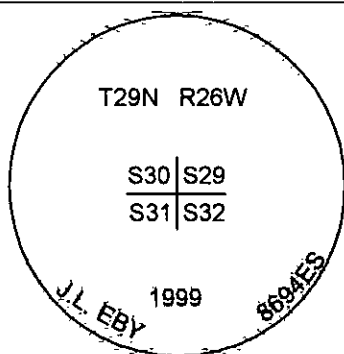
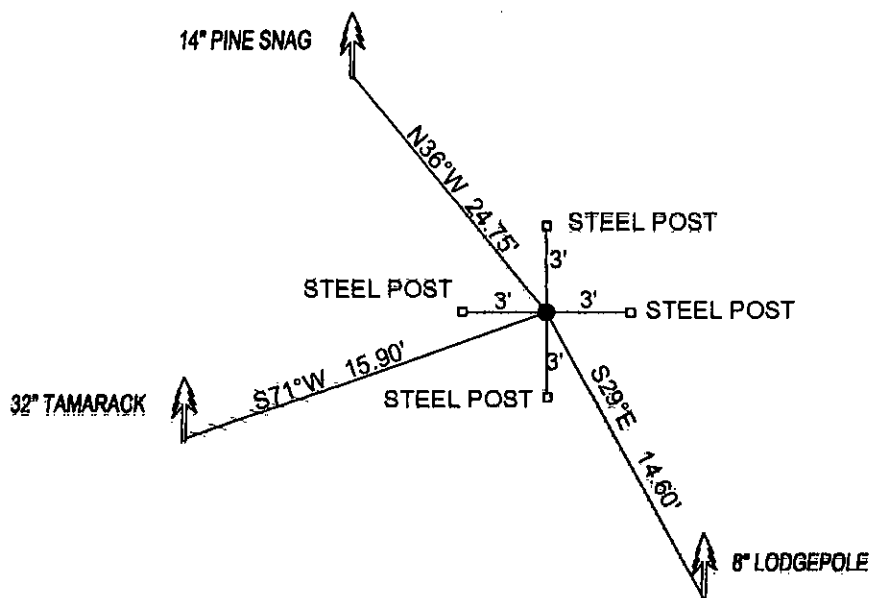


CERTIFIED CORNER RECORDATION

Corner NE CORNER SEC.31 T. 29N R. 26W P.M.M. County LINCOLN

FOUND: 3 1/4" ALUM CAP STAMPED AS SHOWN, FROM WHICH:
8" LODGEPOLE BEARS S29°E 14.60' SCRIBED RM.
32" TAMARACK BEARS S71°W 15.90' SCRIBE OVERGROWN.
14" PINE SNAG BEARS N36°W 24.75' WITH SCRIBE.

MAINTENANCE: PAINTED A RED 6" BAND AND SCRIBE RED.
SET STEEL POSTS 3 FEET NORTH, SOUTH, EAST AND WEST.



SKETCH OF CORNER

CERTIFICATION

I, DAN CROFT
certify the information shown herein is true and correct.

Signature Ground Party Chief

I, MARC J. CARSTENS
certify that this Corner Record correctly represents work performed by me or under my direction in compliance with the "Corner Recordation Act" (10-22-101, et seq., M.C.A.)

[Signature]
Signature of Surveyor & Seal

Date: 10-2010 Reg. No. 5940 LS
Employer: CARSTENS LAND SURVEYING



Office of Clerk and Recorder, County of LINCOLN This "corner

record" was filed for record on 229176 BOOK: CCR CC&R'S PAGE: 11562 Pages: 1

was noted on the cross-index plat: RECORDED: 10/21/2010 12:25 KOI: CC&R'S

book No. TAMMY D. LAUER CLERK AND RECORDER

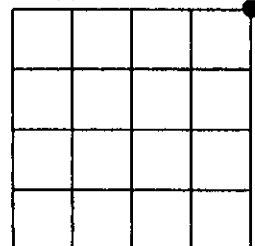
FEE: \$0.00

BY: [Signature]
TO: CARSTENS LAND SURVEYING P.O. BOX 1374, POLSON, MONTANA

Cross Index No. V-5 T. 29N R. 26W PMM

Adopted July 1, 1981, Montana Board of Professional Engineers & Land Surveyors

Sec. 31



• corner this sheet