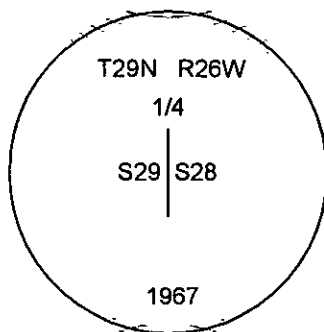
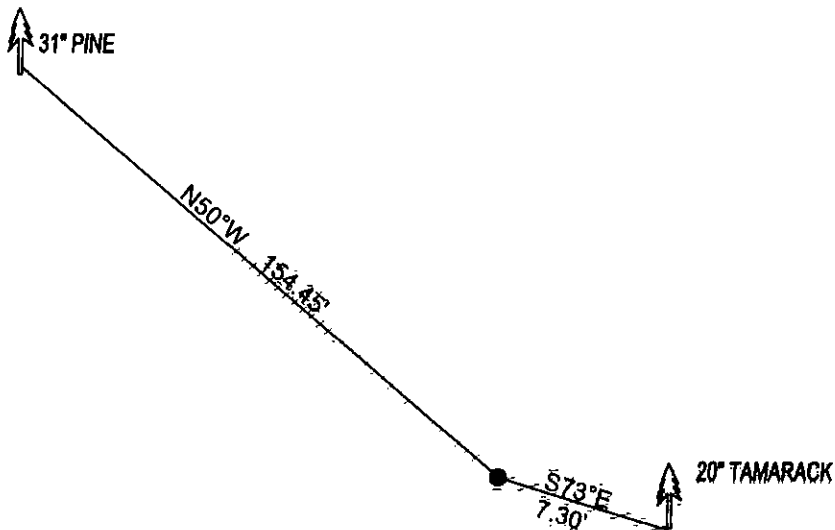


CERTIFIED CORNER RECORDATION

Corner E1/4 CORNER SEC.29 T. 29N R. 26W P.M.M. County LINCOLN

FOUND: 3 1/4" B.L.M. BRASS CAP STAMPED AS SHOWN, FROM WHICH:
20" TAMARACK BEARS S73°E 7.30' WITH SOME SCRIBE.
31" PINE BEARS N50°W 154.45' SCRIBE OVERGROWN.

MAINTENANCE: REMOVED SMALL TREES FROM CORNER AREA
ATTACHED BT TAGS AND PAINTED A RED 6" BAND AND SCRIBE RED



SKETCH OF CORNER

CERTIFICATION

DAN CROFT

I certify the information shown herein is true and correct.

Signature Ground Party Chief

MARC J. CARSTENS

I certify that this Corner Record correctly represents work performed by me or under my direction in compliance with the "Corner Recordation Act" (70-22-101, et seq., M.C.A.)

[Signature]
Signature of Surveyor & Seal



Date: 10-2010 Reg. No. 5940 LS

Employer: CARSTENS LAND SURVEYING

Office of Clerk and Recorder, County of LINCOLN, This "corner

record" was filed for record on 229174 BOOK: CCR CC&R'S PAGE: 11560 Pages: 1

STATE OF MONTANA LINCOLN COUNTY
was noted on the cross-index p RECORDED: 10/21/2010 12:23 KOI: CC&R'S

book No. _____

TAMMY D. LAUER CLERK AND RECORDER

FEE: \$0.00

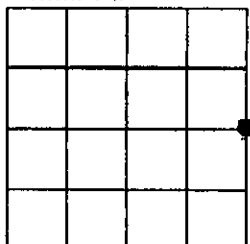
BY: [Signature]

TO: CARSTENS LAND SURVEYING P.O. BOX 1374, POLSON, MONTANA

Cross Index No. T-0 T. 29N R. 26W P.M.M.

Adopted July 1, 1981, Montana Board of Professional Engineers & Land Surveyors

Sec. 29



• corner this sheet