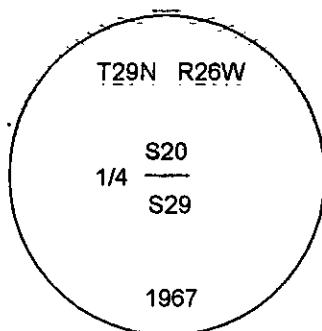
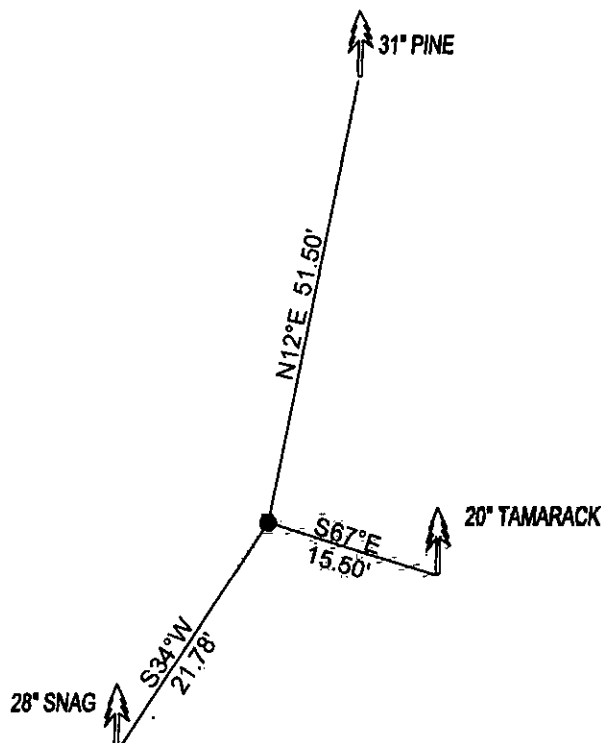


# CERTIFIED CORNER RECORDATION

Corner N1/4 CORNER SEC.29 T. 29N R. 26W P.M.M. County LINCOLN

FOUND: 3 1/4" B.L.M. BRASS CAP STAMPED AS SHOWN, FROM WHICH:  
 7" TAMARACK BEARS S67°E 15.50' SCRIBED 1/4 S29 BT.  
 28" SNAG BEARS S34°W 21.80' SCRIBED 1/4 S BT.  
 20" FIR BEARS N12°E 51.50' SCRIBE OVERGROWN.

MAINTENANCE: REMOVED SMALL TREES FROM CORNER AREA.  
 ATTACHED BT TAGS AND PAINTED A RED 6" BAND AND SCRIBE RED

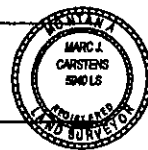


SKETCH OF CORNER

CERTIFICATION  
 I, DAN CROFT  
 certify the information shown herein is true and correct.

Signature Ground Party Chief  
MARC J. CARSTENS  
 I, MARC J. CARSTENS  
 certify that this Corner Record correctly represents work performed by me or under my direction in compliance with the "Corner Recordation Act" (70-22-101, et seq., M.C.A.)

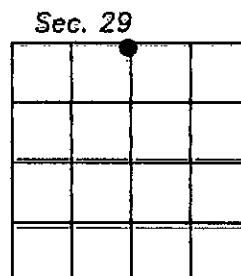
Signature of Surveyor & Seal  
[Signature]  
 Date: 10-2010 Reg. No. 5940 LS  
 Employer: CARSTENS LAND SURVEYING



Office of Clerk and Recorder, County of LINCOLN This "corner  
 record" was filed for record on 229173 BOOK: CCR CC&R'S PAGE: 11559 Pages: 1  
 was noted on the cross-index of STATE OF MONTANA LINCOLN COUNTY  
 book No. RECORDED: 10/21/2010 12:22 KOI: CC&R'S  
TAMMY D. LAUER CLERK AND RECORDER  
 FEE: \$0.00 BY: [Signature]  
 TO: CARSTENS LAND SURVEYING P.O. BOX 1374, POLSON, MONTANA

Cross Index No. R-7 T. 29N R. 26W PMM

Adopted July 1, 1981, Montana Board of Professional Engineers & Land Surveyors



• corner this sheet