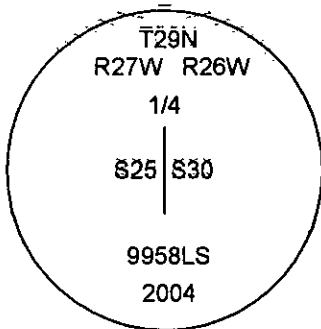
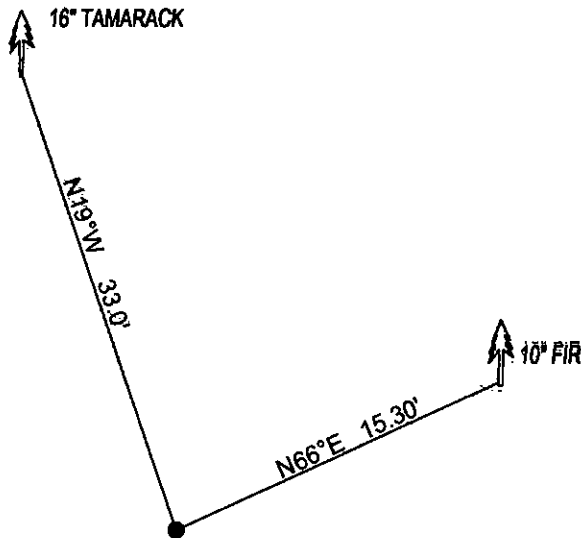


# CERTIFIED CORNER RECORDATION

Corner W1/4 CORNER SEC.30 T. 29N R. 26W P.M.M. County LINCOLN

FOUND: 3 1/4" ALUM CAP STAMPED AS SHOWN, FROM WHICH:  
16" TAMARACK BEARS N19°W 33.0' SCRIBE OVERGROWN.  
10" FIR BEARS N66°E 15.30' SCRIBE OVERGROWN.

MAINTENANCE: REMOVED SMALL TREES FROM CORNER AREA.  
ATTACHED BT TAGS AND PAINTED A RED 6" BAND AND SCRIBE RED



SKETCH OF CORNER

CERTIFICATION

I, DAN CROFT  
certify the information shown herein is true and correct.

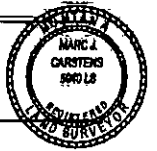
Signature Ground Party Chief

I, MARC J. CARSTENS  
certify that this Corner Record correctly represents work performed by me or under my direction in compliance with the "Corner Recordation Act" (10-22-01, et seq., M.C.A.)

Signature of Surveyor & Seal

Date: 10-2010 Reg. No. 5940 LS

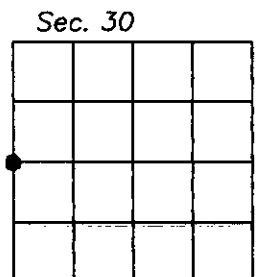
Employer: CARSTENS LAND SURVEYING



Office of Clerk and Recorder, County of LINCOLN. This "corner record" was filed for record on 229170 BOOK: CCR CC&R'S PAGE: 11556 Pages: 1  
STATE OF MONTANA LINCOLN COUNTY  
was noted on the cross-index plat a RECORDED: 10/21/2010 12:19 KOI: CC&R'S  
TAMMY D. LAUER CLERK AND RECORDER  
book No.                      FEE: \$0.00 BY Tammy D. Lauer  
TO: CARSTENS LAND SURVEYING P.O. BOX 1374, POLSON, MONTANA

Cross Index No. T-1 T. 29N R. 26W PMM

Adopted July 1, 1981, Montana Board of Professional Engineers & Land Surveyors



• corner this sheet