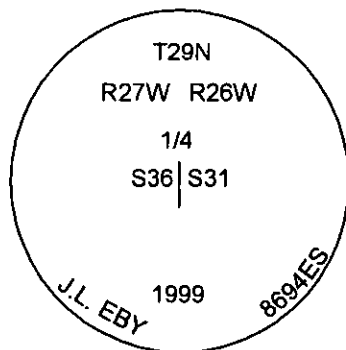
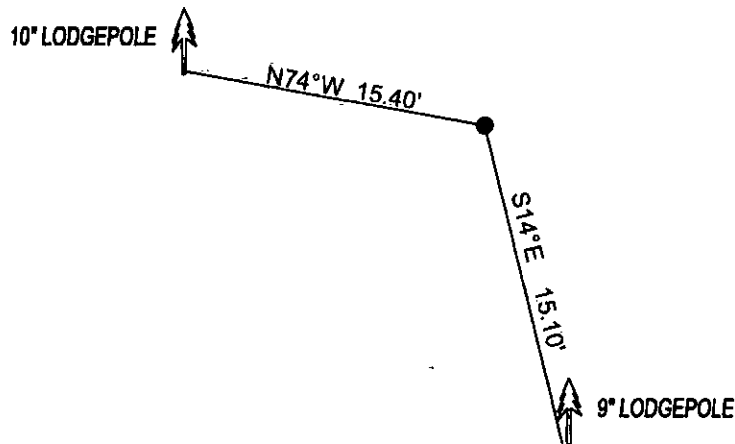


CERTIFIED CORNER RECORDATION

Corner W1/4 CORNER SEC.31 T. 29N R. 28W P.M.M. County LINCOLN

FOUND: 3 1/4" ALUM CAP STAMPED AS SHOWN, FROM WHICH:
10" LODGEPOLE BEARS N74°W 15.40' SCRIBED 1/4 S36 BT.
9" LODGEPOLE BEARS S14°E 15.10' SCRIBE PITCHED OVER.

MAINTENANCE: PAINTED A RED 6" BAND AND SCRIBE RED.



SKETCH OF CORNER

CERTIFICATION

DAN CROFT

certify the information shown herein is true and correct.

Signature Ground Party Chief

MARC J. CARSTENS

certify that this Corner Record correctly represents work performed by me or under my direction in compliance with the "Corner Recordation Act" (70-22-101, et seq., M.C.A.)

[Signature]
Signature of Surveyor & Seal



Date: 10-2010 Reg. No. 5940 LS

Employer: CARSTENS LAND SURVEYING

Office of Clerk and Recorder, County of LINCOLN . This "corner

record" was filed for record on 229168 BOOK: CCR CC&R'S PAGE: 11554 Pages: 1

STATE OF MONTANA LINCOLN COUNTY

was noted on the cross-index plat RECORDED: 10/21/2010 12:17 KOI: CC&R'S

TAMMY D. LAUER CLERK AND RECORDER

book No. FEE: \$0.00

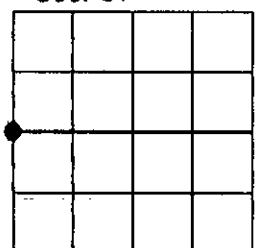
BY: *[Signature]* Deputy

TO: CARSTENS LAND SURVEYING P.O. BOX 1374, POLSON, MONTANA

Cross index No. X-1 T. 29N R. 28W P.M.M.

Adopted July 1, 1981, Montana Board of Professional Engineers & Land Surveyors

Sec. 31



• corner this sheet