

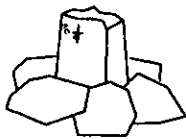
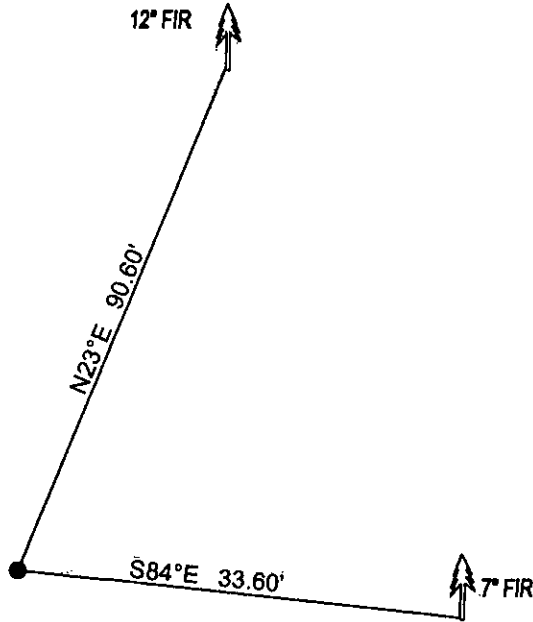
CERTIFIED CORNER RECORDATION

Corner 5/4 CORNER SEC.32 T. 29N R. 26W P.M.M. County LINCOLN

G.L.O. RECORD: SET A LIMESTONE 15x10x8", 10" INTO THE GROUND WITH SC 1/4 ON NORTH FACE, FROM WHICH:
 20" PINE BEARS N29°E 46.20' SCRIBED SC 1/4 S BT.
 10" PINE BEARS S69°E 35.64' SCRIBED SC 1/4 S BT.

FOUND: ORIGINAL STONE WELL SET WITH SC 1/4 ON NORTH FACE, FROM WHICH:
 ORIGINAL BEARING TREES ARE STUMPS CUT LOW TO GROUND WITH NO SCRIBING.

MAINTENANCE: BUILT A COLLAR OF STONE AROUND CORNER AND PAINTED STONE RED.
 NEW BT
 12" FIR BEARS N23°E 90.60' SCRIBED RM.
 7" FIR BEARS S84°E 33.60' SCRIBED RM.
 ATTACHED BT TAGS AND PAINTED A RED 6" BAND AND SCRIBE RED



SKETCH OF CORNER

CERTIFICATION

I, DAN CROFT
 certify the information shown herein is true and correct.

Signature Ground Party Chief

I, MARC J. CARSTENS
 certify that this Corner Record correctly represents work performed by me or under my direction in compliance with the "Corner Recordation Act" (70-22-101, et seq., M.C.A.)

[Signature]
 Signature of Surveyor & Seal



Date: 10-2010 Reg. No. 5940 LS

Employer: CARSTENS LAND SURVEYING

Office of Clerk and Recorder, County of LINCOLN. This "corner

record" was filed for record on

229166 BOOK: CCR CC&R'S PAGE: 11552 Pages: 7

STATE OF MONTANA LINCOLN COUNTY

was noted on the cross-index plat

RECORDED: 10/21/2010 12:15 KOI: CC&R'S

TAMMY D. LAUER CLERK AND RECORDER

book No. _____

FEE: \$0.00

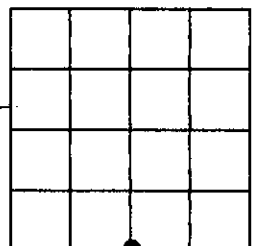
BY: *[Signature]* deputy

TO: CARSTENS LAND SURVEYING P.O. BOX 1374, POLSON, MONTANA

Cross Index No. Z-7 T. 29N R. 26W PMM

Adopted July 1, 1981, Montana Board of Professional Engineers & Land Surveyors

Sec. 32



• corner this sheet