

CERTIFIED CORNER RECORDATION

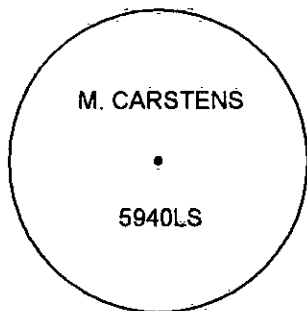
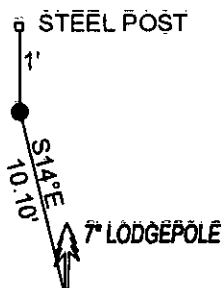
Corner C E1/16 CORNER SEC.31 T. 29N R. 26W P.M.M. County LINCOLN

RECORD: NONE

FOUND: NOTHING

SET: 5/8" REBAR 24" LONG WITH YELLOW PLASTIC CAP STAMPED AS SHOWN, FROM WHICH:

7" LODGEPOLE BEARS S14°E, 10.10' SCRIBED RM.  
SET 5 FOOT STEEL POST 1 FOOT NORTH OF CORNER.  
ATTACHED BT SIGN AND PAINTED A RED 6" BAND AND SCRIBE RED.



SKETCH OF CORNER

CERTIFICATION  
I, DAN CROFT  
certify the information shown herein is true and correct.

Signature Ground Party Chief  
MARC J. CARSTENS  
certify that this Corner Record correctly represents work performed by me or under my direction in compliance with the "Corner Recordation Act" (70-22-101, et seq., M.C.A.)

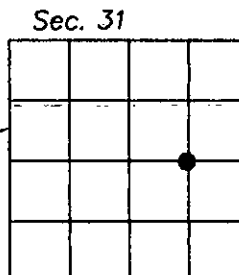
Signature of Surveyor & Seal  
[Signature]

Date: 10-2010 Reg. No. 5940 LS  
Employer: CARSTENS LAND SURVEYING

Office of Clerk and Recorder, County of LINCOLN . This "corner record" was filed for record on 229156 BOOK: CCR CC&R'S PAGE: 11544 Pages: 1  
STATE OF MONTANA LINCOLN COUNTY  
was noted on the cross-index p RECORDED: 10/21/2010 12:04 KOI: CC&R'S  
TAMMY D. LAUER CLERK AND RECORDER  
book No. \_\_\_\_\_ FEE: \$0.00 BY: [Signature]  
TO: CARSTENS LAND SURVEYING P.O. BOX 1374, POLSON, MONTANA

Cross Index No. X-4 T. 29N R. 26W PMM

Adopted July 1, 1981, Montana Board of Professional Engineers & Land Surveyors



• corner this sheet

SECTION 31, TOWNSHIP 29N, RANGE 26 W, P.M.M,

## LEGEND



**SECTION OR 1/4 CORNER AS NOTED**

-----

**HIGHLIGHTED LINE - BOUNDARY SURVEYED,  
POSTED W/ 5' STEEL POSTS, AND  
BLAZED TO PLUM CREEK STANDARD**

SET 24"x5/8" REBAR WITH YPC STAMPED  
M. CARSTENS 5940LS.

