

# CERTIFIED CORNER RECORDATION

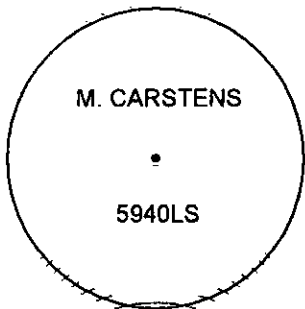
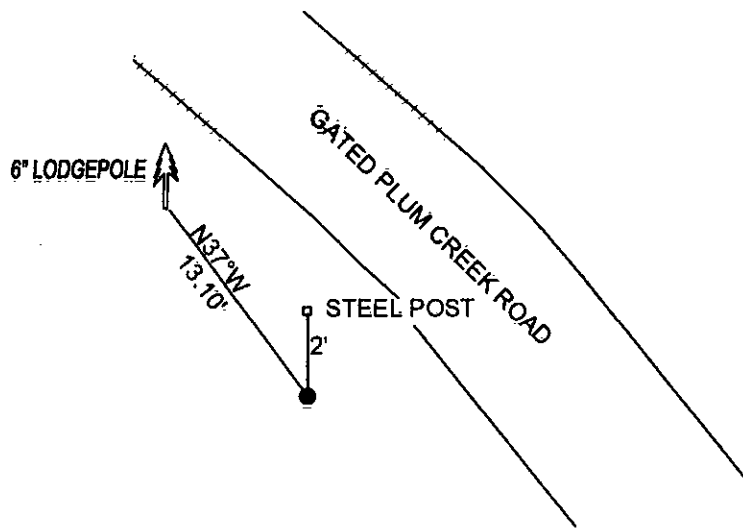
Corner C S SE1/64 CORNER SEC.31 T. 29N R. 26W P.M.M. County LINCOLN

RECORD: NONE

FOUND: NOTHING

SET: 5/8" REBAR 24" LONG WITH YELLOW PLASTIC CAP STAMPED AS SHOWN, FROM WHICH:

6" LODGEPOLE BEARS N37°W, 13.10' SCRIBED RM.  
 SET 5 FOOT STEEL POST 2 FEET NORTH OF CORNER.  
 ATTACHED BY SIGN AND PAINTED A RED 6" BAND AND SCRIBE RED.



SKETCH OF CORNER

CERTIFICATION

I, DAN CROFT  
 certify the information shown herein is true and correct.

\_\_\_\_\_  
 Signature Ground Party Chief

I, MARC J. CARSTENS  
 certify that this Corner Record correctly represents work performed by me or under my direction in compliance with the "Corner Recordation Act" (70-22-101, et seq., M.C.A.)

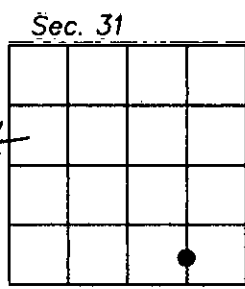
*[Signature]*  
 Signature of Surveyor & Seal

Date: 10-2010 Reg. No. 5940LS  
 Employer: CARSTENS LAND SURVEYING

Office of Clerk and Recorder, County of LINCOLN. This "corner record" was filed for record on 229155 BOOK: CCR CC&R'S PAGE: 11543 Pages: 1

STATE OF MONTANA LINCOLN COUNTY  
 was noted on the cross-index plan RECORDED: 10/21/2010 12:03 KOI: CC&R'S  
 book No. \_\_\_\_\_ TAMMY D. LAUER CLERK AND RECORDER  
 FEE: \$0.00 BY: *[Signature]*  
 TO: CARSTENS LAND SURVEYING P.O. BOX 1374, POLSON, MONTANA

Cross Index No. QQ-25 T. 29N R. 26W PMM



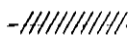
Adopted July 1, 1981, Montana Board of Professional Engineers & Land Surveyors

SECTION 31, TOWNSHIP 29N, RANGE 26 W, P.M.M,

**LEGEND**



SECTION OR 1/4 CORNER AS NOTED



HIGHLIGHTED LINE - BOUNDARY SURVEYED, POSTED W/ 5' STEEL POSTS, AND BLAZED TO PLUM CREEK STANDARD



SET 24"x5/8" REBAR WITH YPC STAMPED M.CARSTENS 5940LS.

