

CERTIFIED CORNER RECORDATION

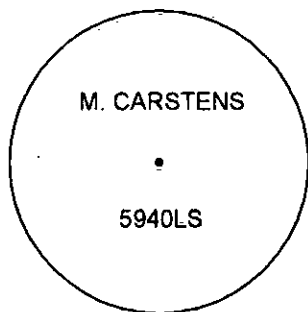
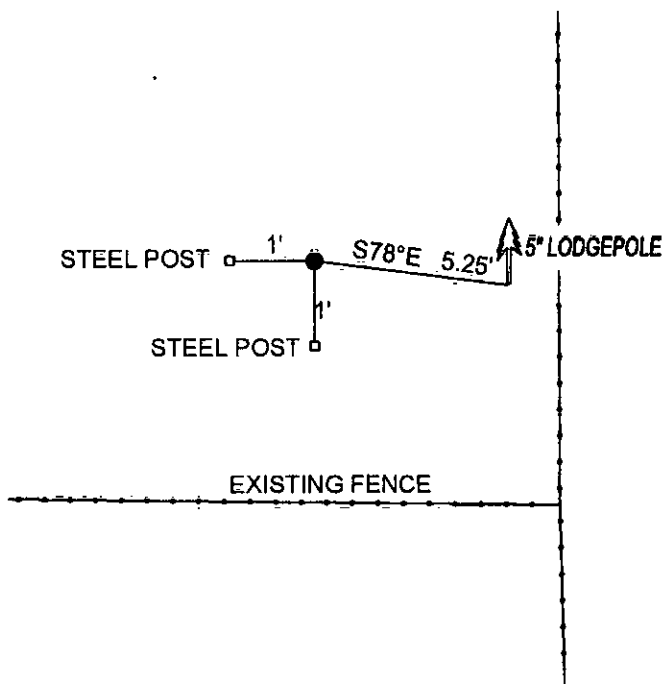
Corner N1/16 CORNER SEC.30 AND 29 T. 29N R. 26W P.M.M. County LINCOLN

RECORD: NONE

FOUND: NOTHING

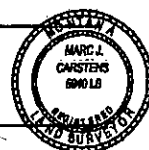
SET: 5/8" REBAR 24" LONG WITH YELLOW PLASTIC CAP STAMPED AS SHOWN, FROM WHICH:

5" LODGEPOLE BEARS S78°E, 5.25' SCRIBED 1/16 RM.  
SET 5 FOOT STEEL POSTS 1 FOOT WEST AND 1 FOOT SOUTH OF CORNER.  
ATTACHED BY SIGN AND PAINTED A RED 6" BAND AND SCRIBE RED.



SKETCH OF CORNER

CERTIFICATION  
I, DAN CROFT  
certify the information shown herein is true and correct.  
Signature Ground Party Chief  
I, MARC J. CARSTENS  
certify that this Corner Record correctly represents work  
performed by me or under my direction in compliance with  
the "Corner Recordation Act" (70-22-101, et seq., M.C.A.)  
Signature of Surveyor & Seal  
Date: 10-2010 Reg No. 5940 LS  
Employer: CARSTENS LAND SURVEYING



Office of Clerk and Recorder, County of LINCOLN This "corner

record" was filed for record on 229154 BOOK: CCR CC&R'S PAGE: 11542 Pages: 1

STATE OF MONTANA LINCOLN COUNTY

RECORDED: 10/21/2010 12:02 KOI: CC&R'S

TAMMY D. LAUER CLERK AND RECORDER

book No. FEE: \$0.00

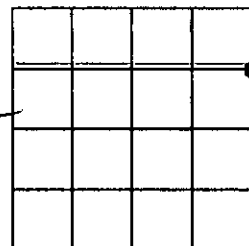
BY: Debbie Deuser Deputy

TO: CARSTENS LAND SURVEYING P.O. BOX 1374, POLSON, MONTANA

Cross Index No. S-5 T. 29N R. 26W PMM

Adopted July 1, 1981, Montana Board of Professional Engineers & Land Surveyors

Sec. 30



• corner this sheet

SECTION 30, TOWNSHIP 29N, RANGE 26 W, P.M.M,

## LEGEND



**SECTION OR 1/4 CORNER AS NOTED**

**HIGHLIGHTED LINE - BOUNDARY SURVEYED,  
POSTED W/ 5' STEEL POSTS, AND  
BLAZED TO PLUM CREEK STANDARD**

SET 24"x5/8" REBAR WITH YPC STAMPED  
M.CARSTENS 5940LS.

