

# CERTIFIED CORNER RECORDATION

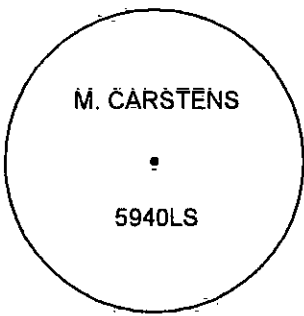
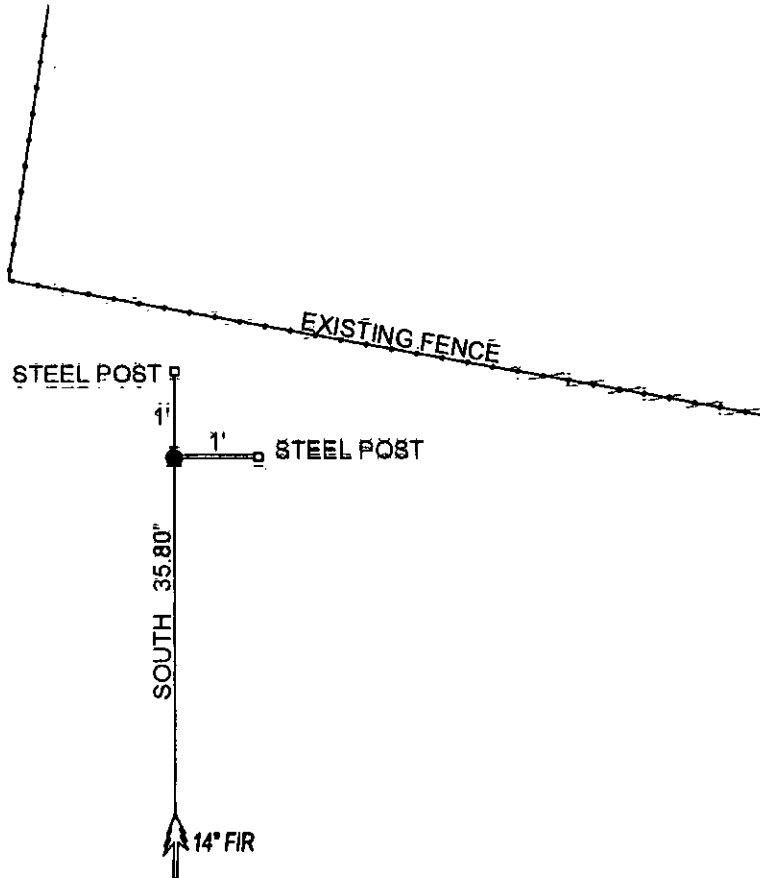
Corner NE1/16 CORNER SEC.30 T. 29N R. 26W P.M.M. County LINCOLN

RECORD: NONE

FOUND: NOTHING

SET: 5/8" REBAR 24" LONG WITH YELLOW PLASTIC CAP STAMPED AS SHOWN, FROM WHICH:

14" FIR BEARS SOUTH, 35.80' SCRIBED NE 1/16.  
 SET 5 FOOT STEEL POSTS 1 FOOT NORTH AND 1 FOOT EAST OF CORNER.  
 ATTACHED BY SIGN AND PAINTED A RED 6" BAND AND SCRIBE RED.



SKETCH OF CORNER

CERTIFICATION

I, DAN CROFT  
 certify the information shown herein is true and correct.

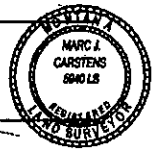
Signature Ground Party Chief

I, MARC J. CARSTENS  
 certify that this Corner Record correctly represents work performed by me or under my direction in compliance with the "Corner Recordation Act" (10-22-101, et seq., M.C.A.)

*Marc J. Carstens*  
 Signature of Surveyor & Seal

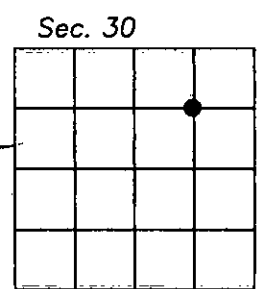
Date: 10-2010 Reg. No. 5940 LS

Employer: CARSTENS LAND SURVEYING



Office of Clerk and Recorder, County of LINCOLN. This "corner record" was filed for record on 229152 BOOK: CCR CC&R'S PAGE: 11540 Pages: 1 STATE OF MONTANA LINCOLN COUNTY was noted on the cross-index plat RECORDED: 10/21/2010 12:00 KOI: CC&R'S book No. TAMMY D. LAUER CLERK AND RECORDER FEE: \$0.00 BY: *Tammy D. Lauer* TO: CARSTENS LAND SURVEYING P.O. BOX 1374, POLSON, MONTANA

Cross Index No. 94 T. 29N R. 26W P.M.M.



• corner this sheet

SECTION 30, TOWNSHIP 29N, RANGE 26 W, P.M.M,

**LEGEND**



-----  
 HIGHLIGHTED LINE - BOUNDARY SURVEYED,  
 POSTED W/ 5' STEEL POSTS, AND  
 BLAZED TO PLUM CREEK STANDARD

● SET 24"x5/8" REBAR WITH YPC STAMPED  
 M.CARSTENS 5940LS.

