

CERTIFIED CORNER RECORDATION

Corner S 1/4 cor. of Sec. 20 T 29 N. R. 26 W. P.M.M. LINCOLN County

I. Record: 1893 GLO survey by Reel and Jaqueth: Set a sandstone 12x8x5 ins. 8 ins. in the ground marked 1/4 on N face from which:

- A pine, 15 ins. diam. bears S. 34°E., 33 lks. dist. (21.78 ft.)
- A fir, 8 ins. diam. bears N. 26°30' E., 78 lks. dist. (51.48 ft.)

1966 BLM Remon: Set a iron post with brass cap from original bearing trees.

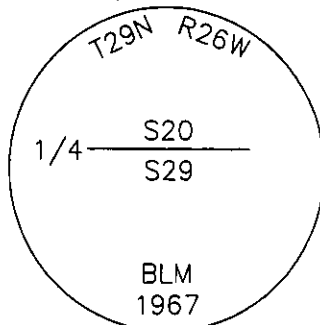
- A pine, 34 ins. diam., bears S. 34°E., 33 lks. dist.
- A fir, 14 ins. diam., bears N. 26°30'E., 78 lks. dist.

II. Found: 3 1/4 ins. diam. BLM brass cap firmly set from which:

- A Ponderosa pine stump, 23 ins. diam., bears S. 34°E., 22.90 ft. dist.
- A Douglas fir, 18 ins. diam., bears N. 12°E., 51.80 ft. dist. (N. 26°30'E. record)

III. Perpetuation: We establish 1 new bearing tree:

A Larch, 4 ins. diam., bears S. 67°E., 15.47 ft. dist. scribed 1/4 S29 BT.

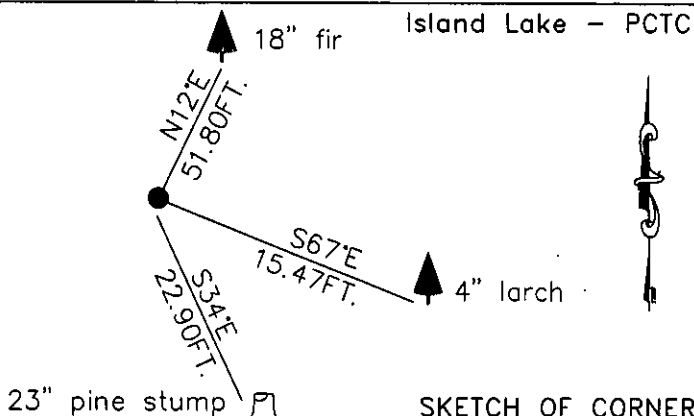


Painted 6 in. wide red bands around BT's and attached Bearing Tree and Land Survey Monument signs.

Magnetic declination: 20° East assumed.

Equipment used: Hand compass and loggers tape

Kootenai Surveyors Inc., 314 California Av., Libby, MT. 59923 (406) 293-4354



CERTIFICATION

I, Kenneth Kern certify the information shown herein is true and correct.

Alvah F. Hughes Signature Ground Party Chief

Alvah F. Hughes 7322LS

I certify that this Corner Record correctly represents work performed by me or under my direction in compliance with the Corner Recordation Act (70-22-101 et seq., M.C.A.)

Alvah F. Hughes Signature of Surveyor & Sec

Date: 10/09/02 Reg. No. 7322-LS

Employer: Kootenai Surveyors Inc.

Office of Clerk and Recorder, County of Lincoln. This "corner

record" was filed for r 190117 BOOK: CCR CC&R'S PAGE: 10899 Pages: 1

was noted on the cross RECORDED: 12/06/2005 9:10 KOI: CC&R'S

book No. CORAL M. CUMMINGS CLERK AND RECORDER

FEE: \$0.00 BY: Alvah F. Hughes

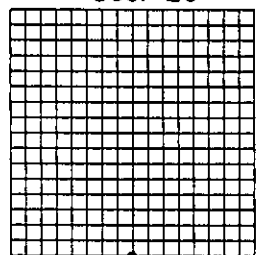
TO: AL HUGHES-SURVEYOR P.O. BOX 393, LIBBY MT 59923

R-7

Cross Index No. R-09 T. 29N. R. 26W. P.M., MT

Adopted July 1, 1981, Montana Board of Professional Engineers & Land Surveyors

Sec. 20



• corner this sheet