

CERTIFIED CORNER RECORDATION

Corner SW cor S36 T 29 N. R. 26 W. P.M.M. LINCOLN County

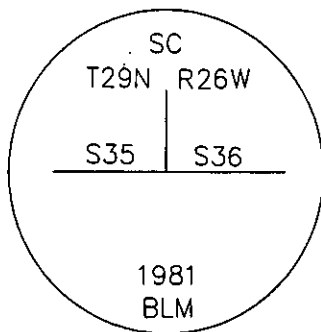
I. Record: 1981 Remon, BLM - (GLO) - Found standard corner for sections 35 & 36, a sandstone 12"x8"x6" marked "SC" on North face with 1 notch on East face and 5 notches on West face from which:

- A fir, 14" in diameter, bears N68°E, 28 links (18.48'). (Original GLO)
- A dead pine, 18" in diameter, bears S38°W, 12 links (7.92'). (Original GLO)
- A dead larch, 18" in diameter, bears N65°W, 43 links (28.38'). (Original GLO)
- A fir, 7" in diameter, bears N14°E, 43' links (27.72').
- A fir, 6" in diameter, bears N26°W, 11 links (7.26').

II. Found: A 3 1/4" aluminum cap set firmly in a stone collar, as shown below, from which:

- A fir, 10" in diameter, bears N14°E, 27.67'. (1981 Remon)
- A fir, 12" in diameter, bears N68°E, 17.42'. (Original GLO)
- A fir, 10" in diameter, bears S20°W, 25.90'. (Origin unknown)
- A larch snag, 18" in diameter, bears N65°W, 28.42'. (Original GLO)
- A fir, 8" in diameter, bears N26°W, 7.40'. (1981 Remon)

III. Perpetuation:



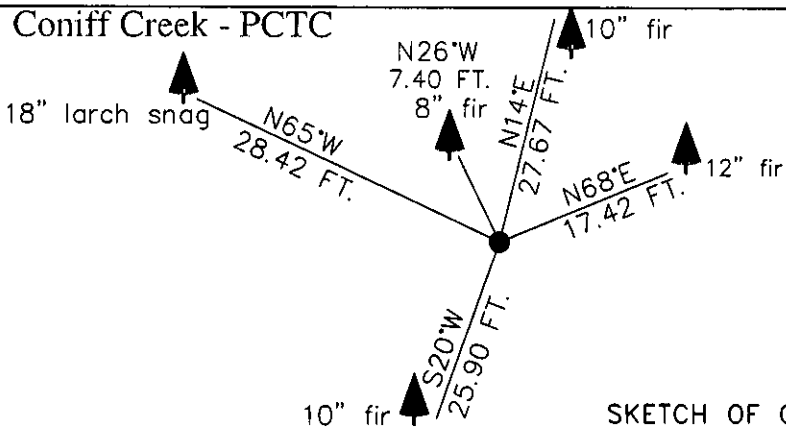
Painted red bands around all BT's and attached Bearing Tree and Land Survey Monument signs.

Magnetic declination: 20° East assumed

Equipment used: Hand compass and loggers tape

Kootenai Surveyors Inc., 314 California Av., Libby, MT. 59923 (406) 293-4354

Coniff Creek - PCTC



SKETCH OF CORNER

CERTIFICATION MONTANA

I, Kenneth Kern certify the information shown herein is true and correct.

Alvah F. Hughes
Signature Ground Party Chief **HUGHES**
7322LS

I, Alvah F. Hughes certify that this Corner Record correctly represents work performed by me or under my direction in compliance with the "Corner Recordation Act" (70-22-101, et seq., M.C.A.)

Alvah F. Hughes
Signature of Surveyor & Seal **HUGHES**
7322LS

Date: 12/09/2004 Reg. No. 7322-LS

Employer: Kootenai Surveyors Inc.

Office of Clerk and Recorder, County of Lincoln This "corner

record" was filed for: 190116 BOOK: CCR CC&R'S PAGE: 10898 Pages: 1

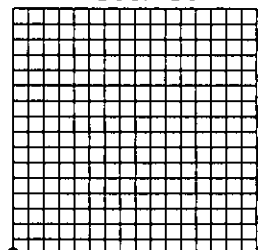
was noted on the crc STATE OF MONTANA LINCOLN COUNTY
book No. RECORDED: 12/06/2005 9:08 KOI: CC&R'S

CORAL M. CUMMINGS CLERK AND RECORDER
FEE: \$0.00 BY: *Coral M. Cummings*
TO: AL HUGHES-SURVEYOR P.O. BOX 393, LIBBY MT 59923

Cross Index No. Z 21 T. 29N. R. 26W. P.M., MT

Adopted July 1, 1981, Montana Board of Professional Engineers & Land Surveyors

Sec. 36



• corner this sheet