

# CERTIFIED CORNER RECORDATION

Corner NE cor. of Sec. 20 T 29 N. R. 26 W. P.M.M. LINCOLN County

I. Record: 1893 GLO survey by Keerl and Jaqueth: Set a stone and 4 bearing trees.

1966 BLM Remon: Set a iron post with brass cap from original stone monument from which:  
Original bearing trees:

A fir, 24 ins. diam., bears S.57°30'E., 95 lks.(37.62 ft.) dist., mkd. T29N R26W S21 BT.

(Record: S. 0°01'E., 95 lks.)

A pine, 14 ins. diam., bears S.37°W., 57 lks.( 37.62 ft.) dist., mkd. with an overgrown blaze. (record)

A fir stump, 8 ins. diam., bears N.49°W., 86 lks.(56.76 ft.) dist., mkd. with an overgrown blaze.

New bearing trees:

A pine, 8 ins. diam., bears N.89°45'E., 69 lks.(45.54 ft.) dist., mkd. T29N R26W S16 BT.

A fir, 8 ins. diam., bears N.63°30'W., 24 lks.(15.84 ft.) dist., mkd. T29N R26W S17 BT.

II. Found: 3 1/4 in. diam. BLM brass cap firmly in place from which:

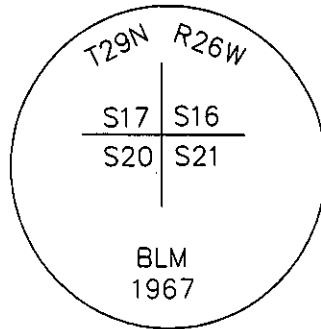
A Ponderosa pine, 19 1/2 ins. diam., bears S.40°30'W., 38.36 (37.62 record) ft. dist.

A Douglas fir, 9 ins. diam., bears N.63°30'W., 15.84 ft. dist.

A Douglas fir, 18 ins. diam., bears N.57°E., 24.42 ft. dist.

III. Perpetuation: We establish 1 new bearing tree:

A Larch, 8 ins. diam. bears S.60°W., 19.50 ft. dist. scribed T29N R26W S21 BT.

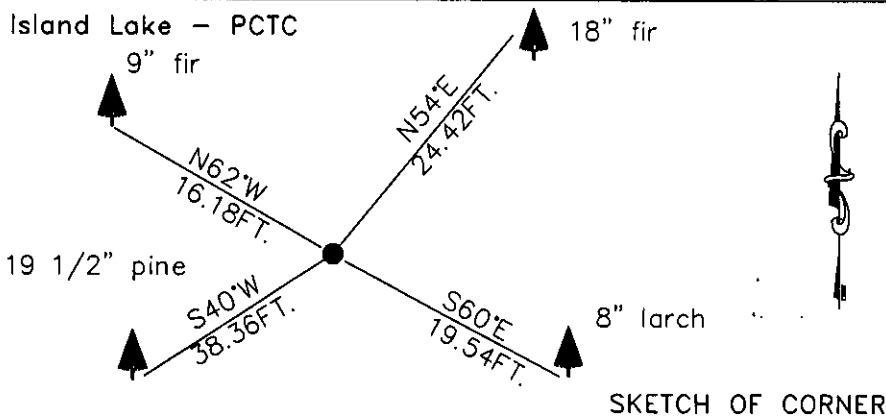


Painted 6 in. wide red bands around BT's and attached Bearing Tree and Land Survey Monument signs.

Magnetic declination: 20° East assumed

Equipment used: Hand compass and loggers tape

Kootenai Surveyors Inc., 314 California Av., Libby, MT. 59923 (406) 293-4354



SKETCH OF CORNER

CERTIFICATION

I, Kenneth Kern  
certify the information shown herein is true and correct.

Alvah F. Hughes  
Signature Ground Party Chief 7322LS

I, Alvah F. Hughes  
certify that this Corner Record correctly represents work performed by me or under my direction in compliance with the "Corner Recordation Act" (70-22-101, et seq., M.C.A.)

Alvah F. Hughes  
Signature of Surveyor & Seal 7322LS

Date: 10/09/02 Reg. No. 7322-LS

Employer: Kootenai Surveyors Inc.

Office of Clerk and Recorder, County of Lincoln This "corner

record" was filed for record on

190114 BOOK: CCR CC&R'S PAGE: 10896 Pages: 1

was noted on the cross-in: STATE OF MONTANA LINCOLN COUNTY

book No. RECORDED: 12/06/2005 9:05 KOI: CC&R'S

CORAL M. CUMMINGS CLERK AND RECORDER

FEE: \$0.00

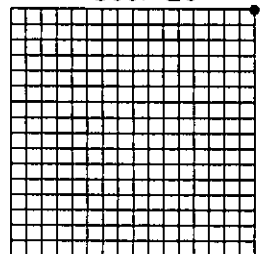
BY: Alvah F. Hughes

TO: AL HUGHES-SURVEYOR P.O. BOX 393, LIBBY MT 59923

Cross Index No. N 09 T. 29N. R. 26W. P.M., MT

Adopted July 1, 1981, Montana Board of Professional Engineers & Land Surveyors

Sec. 20



• corner this sheet