

CERTIFIED CORNER RECORDATION

Corner N 1/4 cor. of Sec. 36 T 29 N. R. 26 W. P.M.M. LINCOLN County

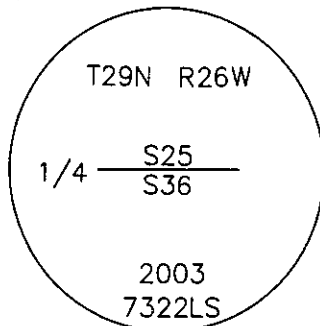
I. Record: 1893 Original GLO - Set a wood post from which:

- A tamarack, 30" in diameter, bears N22°W, 32 links (21.12').
- A fir, 24" in diameter, bears S12°W, 48 links (31.68').

II. Found:

- A fir stump, 26" in diameter, bears S12°W, 48 links (31.68').
- A larch stump, 30" in diameter, bears N22°W, 32 links (21.12'), with visible scribing.

III. Perpetuation: Set by distance - distance intersect from found original GLO BT remains, set a 3 1/4" diameter A.C. on a 2 1/2" diameter aluminum pipe marked as shown:



From which:

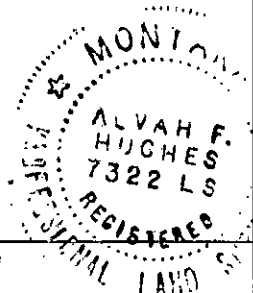
- A douglas fir, 9" in diameter, bears S71°W, 60.1' distant, scribed 1/4 S36 BT.
- A larch, 6" in diameter, bears N71°W, 50.90' distant, scribed 1/4 S25 BT.

Painted red bands around all BT's and attached Bearing Tree and Land Survey Monument signs.

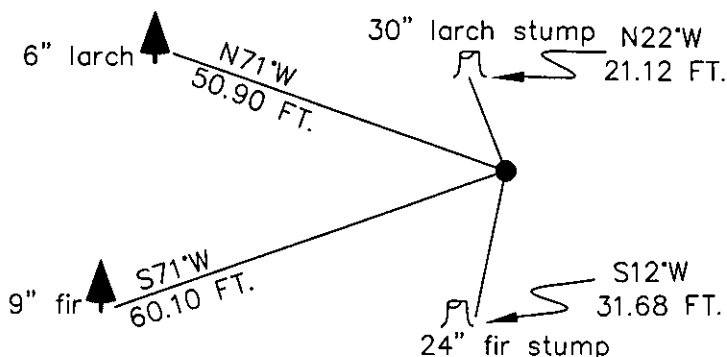
Magnetic declination: 20° East assumed

Equipment used: Hand compass and loggers tape

Kootenai Surveyors Inc., 314 California Av., Libby, MT. 59923 (406) 293-4354



Coniff Creek - PCTC



SKETCH OF CORNER

CERTIFICATION

I, John Damon
certify the information shown herein is true and correct.

John Damon
Signature Ground Party Chief

I, Alvah F. Hughes
certify that this Corner Record correctly represents work performed by me or under my direction in compliance with the "Corner Recordation Act" (70-22-101, et seq., M.C.A.)

Alvah F. Hughes 7322LS
Signature of Surveyor & Seal

Date: 12/09/2004 Reg. No. 7322-LS

Employer: Kootenai Surveyors Inc.

Office of Clerk and Recorder, County of Lincoln. This "corner

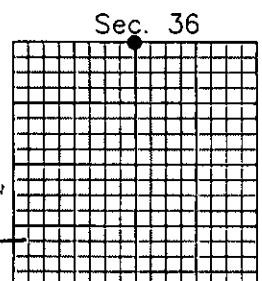
record" was filed for record

was noted on the cross-index
book No. _____

181341 BOOK: CCR CC&R'S PAGE: 10737 Pages: 1
STATE OF MONTANA LINCOLN COUNTY
RECORDED: 12/17/2004 9:03 KOI: CC&R'S
CORAL M. CUMMINGS CLERK AND RECORDER
FEE: \$0.00 BY: Joerni Dennis
MA. 57700

Cross Index No. V 23 T. 29N. R. 26W. P.M., MT

Adopted July 1, 1981, Montana Board of Professional Engineers & Land Surveyors



• corner this sheet