

CERTIFIED CORNER RECORDATION

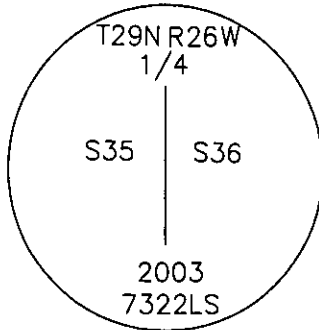
Corner W 1/4 cor. of Sec. 36 T 29 N. R. 26 W. P.M.M. LINCOLN County

I. Record: 1893 Original GLO - Set a wood post, from which:

- A fir, 7" in diameter, bears N76°E, 5 links (3.30').
- A tamarack, 26" in diameter, bears N30°W, 17 links (11.22').

II. Found: A douglas fir, 14" in diameter, bears N76°E, 5 links (3.30'), grown over face.
 A stump, bears N33°W, 17 links (11.22'), visible scribe.

III. Perpetuation: Set by distance - distance intersect from found original GLO BT evidence, a 3 1/4" diameter U.S.F.S. aluminum cap on a 2 1/2" diameter aluminum pipe, marked as shown:



From which:

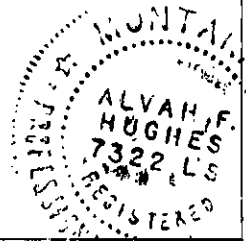
A lodge pole pine, 9" in diameter, bears N51°W, 33.10' distant, scribed 1/4 S35 BT.

Painted red bands around all BT's and attached BT & LSM signs.

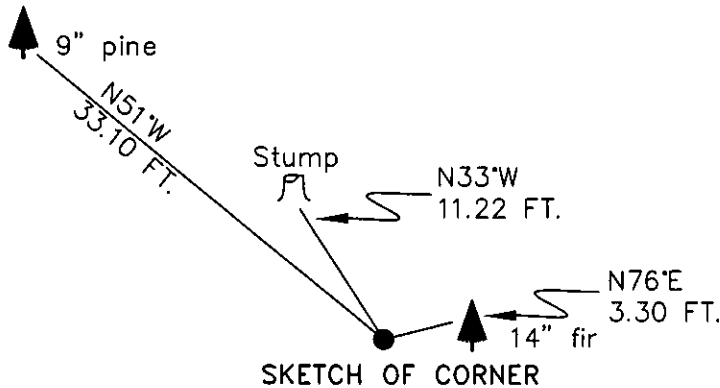
Magnetic declination: 20° East assumed

Equipment used: Hand compass and loggers tape

Kootenai Surveyors Inc., 314 California Av., Libby, MT. 59923 (406) 293-4354



Coniff Creek - PCTC



CERTIFICATION

I, John Damon
 certify the information shown herein is true and correct.
 Signature Ground Party Chief
 I, Alvah F. Hughes
 certify that this Corner Record correctly represents work performed by me or under my direction in compliance with the "Corner Recordation Act" (70-22-101, et seq., M.C.A.)
 Signature of Surveyor & Seal
 Date: 12/09/2004 Reg. No. 7322-LS
 Employer: Kootenai Surveyors Inc.

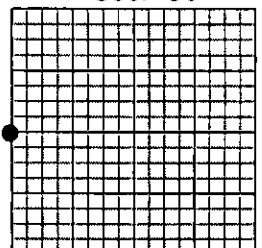
Office of Clerk and Recorder, County of Lincoln. This "corner

record" was filed for record 181340 BOOK: CCR CC&R'S PAGE: 10736 Pages: 1
 was noted on the cross-index STATE OF MONTANA LINCOLN COUNTY
 book No. _____ RECORDED: 12/17/2004 9:02 KOI: CC&R'S
 CORAL M. CUMMINGS CLERK AND RECORDER
 FEE: \$0.00 BY: J. Dennis Bennett
 TO: FILED Deputy

Cross Index No. X 21 T. 29 N. R. 26 W. P.M., MT

Adopted July 1, 1981, Montana Board of Professional Engineers & Land Surveyors

Sec. 36



• corner this sheet