

CERTIFIED CORNER RECORDATION

Corner SW cor S36 T 29 N. R. 26 W. P.M.M. LINCOLN County

I. Record: 1981 Remon, BLM - (GLO) - Found standard corner for sections 35 & 36, a sandstone 12"x8"x6" marked "SC" on North face with 1 notch on East face and 5 notches on West face from which:

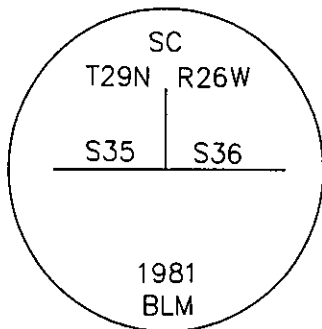
- A fir, 14" in diameter, bears N68°E, 28 links (18.48'). (Original GLO)
- A dead pine, 18" in diameter, bears S38°W, 12 links (7.92'). (Original GLO)
- A dead larch, 18" in diameter, bears N65°W, 43 links (28.38'). (Original GLO)

- A fir, 7" in diameter, bears N14°E, 43 links (27.72').
- A fir, 6" in diameter, bears N26°W, 11 links (7.26').

II. Found: A 3 1/4" aluminum cap set firmly in a stone collar, as shown below, from which:

- A fir, 10" in diameter, bears N14°E, 27.67'. (1981 Remon)
- A fir, 12" in diameter, bears N68°E, 17.42'. (Original GLO)
- A fir, 10" in diameter, bears S20°W, 25.90'. (Origin unknown)
- A larch snag, 18" in diameter, bears N65°W, 28.42'. (Original GLO)
- A fir, 8" in diameter, bears N26°W, 7.40'. (1981 Remon)

III. Perpetuation:



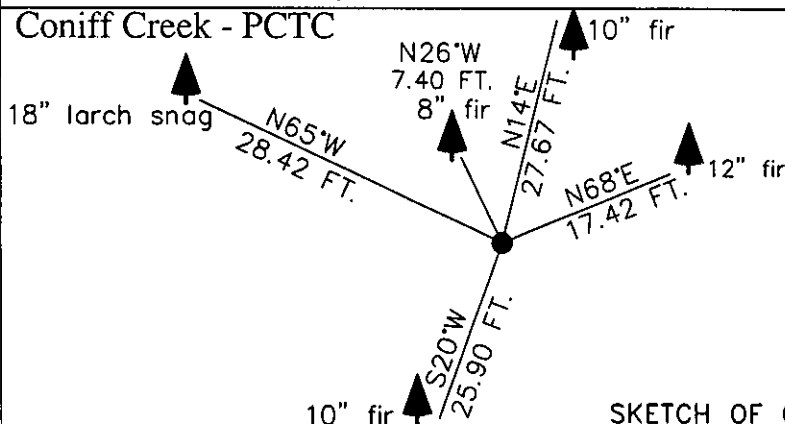
Painted red bands around all BT's and attached Bearing Tree and Land Survey Monument signs.

Magnetic declination: 20° East assumed

Equipment used: Hand compass and loggers tape

Kootenai Surveyors Inc., 314 California Av., Libby, MT. 59923 (406) 293-4354

Coniff Creek - PCTC



SKETCH OF CORNER

CERTIFICATION
I, Peter Landis
certify the information shown herein is true and correct.
Peter Landis
Signature Ground Party Chief
I, Alvah F. Hughes
certify that this Corner Record correctly represents work performed by me or under my direction in compliance with the "Corner Recordation Act" (70-22-101, et seq., M.C.A.)
Alvah F. Hughes
Signature of Surveyor & Seal
Date: 12/09/2004 Reg. No. 7322-LS
Employer: Kootenai Surveyors Inc.

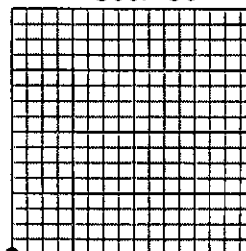
Office of Clerk and Recorder, County of Lincoln This "corner

record" was filed for rec: 181339 BOOK: CCR CC&R'S PAGE: 10735 Pages: 1
was noted on the cross- STATE OF MONTANA LINCOLN COUNTY
book No. _____ RECORDED: 12/17/2004 9:01 KOI: CC&R'S
CORAL M. CUMMINGS CLERK AND RECORDER
FEE: \$0.00 BY: Coral M. Cummings
TO: FILED ,

Cross Index No. Z 21 T. 29N. R. 26W. P.M., MT

Adopted July 1, 1981, Montana Board of Professional Engineers & Land Surveyors

Sec. 36



• corner this sheet